

NEOLO ELONGATED FLUSH VALVE TOILET

- Elongated flush valve toilet
- Vitreous china
- Low consumption (6.0 Lpf/1.6gpf)
- Wall outlet elongated bowl, angle back and base
- Siphon jet flush action
- Fully glazed 2" trapway
- 12" x 9" water surface area
- 1-1/2" inlet spud
- 4 bolt caps

- ☐ **2529.116** Elongated bowl only, top spud, wall outlet
- ☐ **2530.116** Elongated bowl only, back spud, wall outlet
- ☐ **2531.116** Elongated bowl only, back spud, wall outlet, integral seat

Nominal Dimensions:

622 x 355 x 368mm
(24-1/2" x 14" x 14-1/2")

Recommended working pressure –
between 25 psi at valve when flushing
and 80 psi static

Fixture only, less seat and flush valve

Compliance Certifications -**Meets or Exceeds the Following Specifications:**

- ASME A112.19.2 for Vitreous China Fixtures

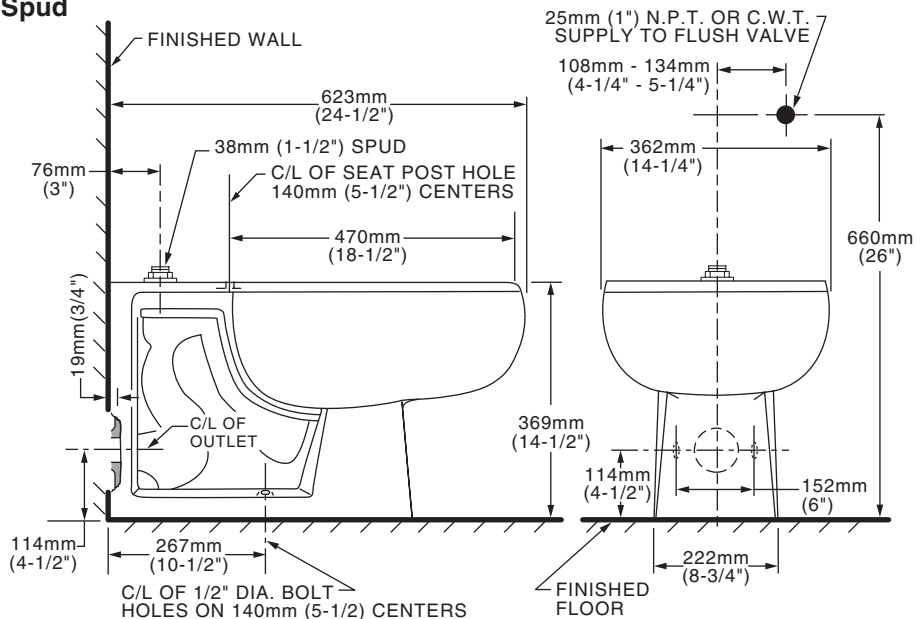


SEE REVERSE FOR ROUGHING-IN DIMENSIONS

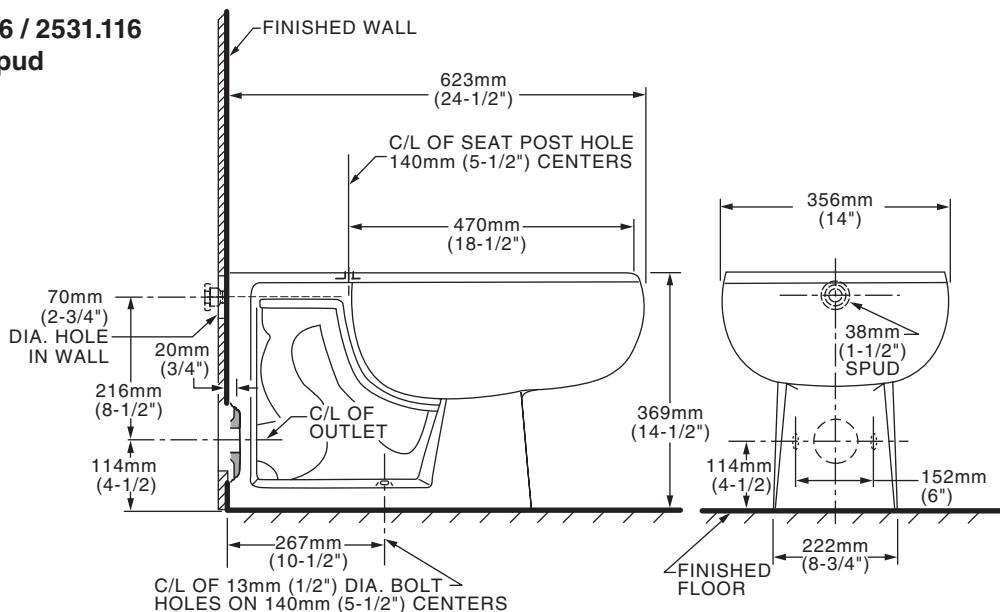
To Be Specified:

- ☐ Color: ☐ White
- ☐ Seat:
 - ☐ American Standard #5901.100
Heavy duty open front less cover
 - ☐ American Standard #5905.100
Extra heavy duty open front less cover
- ☐ Flush Valve:
 - ☐ Sensor-Operated: American Standard Selectronic®
DC Power #6065.161.002 (Top Spud)
 - ☐ Sensor-Operated: American Standard Selectronic®
AC Power #6067.262.002 (Back Spud)
 - ☐ Manual: American Standard #6047.161.002
(Top Spud)

2529.116 Top Spud



**2530.116 / 2531.116
Back Spud**



NOTES:

WASTE OUTLET SEAL RING MUST BE NEOPRENE OR GRAPHITE-FELT (WAX RING NOT RECOMMENDED).

TO COMPLY WITH AREA CODE GOVERNING THE HEIGHT OF VACUUM BREAKER ON FLUSH VALVE, THE PLUMBER MUST VERIFY DIMENSIONS SHOWN FOR SUPPLY ROUGHING.

FLUSH VALVE NOT INCLUDED AND MUST BE ORDERED SEPARATELY.

IMPORTANT: Dimensions of fixtures are nominal and may vary within the range of tolerances established by ANSI Standard A112.19.2. These measurements are subject to change or cancellation. No responsibility is assumed for use of superseded or voided pages.