

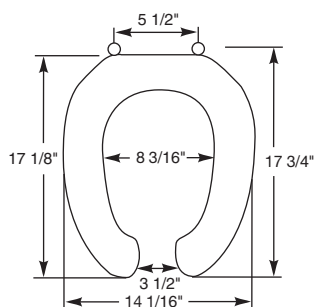


M E D I C - A I D[®] S E A T S

MODEL 3L2150T

- 3" LIFT SEAT
- ELONGATED SEAT, OPEN FRONT WITH COVER
- HEAVY DUTY PLASTIC
- DURAGUARD[®] ANTIMICROBIAL AGENT
- STA-TITE[®], COMMERCIAL FASTENING SYSTEM[™]

DuraGuard[®]
ANTIMICROBIAL

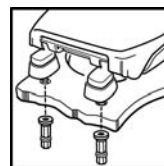


Ring thickness is 3/4"

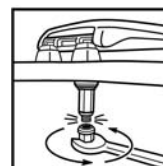
Ring thickness including the bumper is 3"

Height of the seat with cover is 4-3/16"

STA-TITE[®]



Finger-tighten
fastening nuts.



Using wrench,
tighten until lower
portion shears off.



STA-TITE[®], COMMERCIAL
FASTENING SYSTEM[™],
ONE-PIECE INTEGRATED
NUT AND WASHER



EXTERNAL CHECK HINGE
WITH 300 SERIES
STAINLESS STEEL BOLTS



ADDITIONAL 3" OF HEIGHT