

CHICAGO FAUCETS
a Geberit company

2100 South Clearwater Drive
Des Plaines, IL 60018
Phone: 847-803-5000
Fax: 847-803-5454
www.chicagofaucets.com

REPAIR PARTS

FITTING NO.

1102-E35ABCP

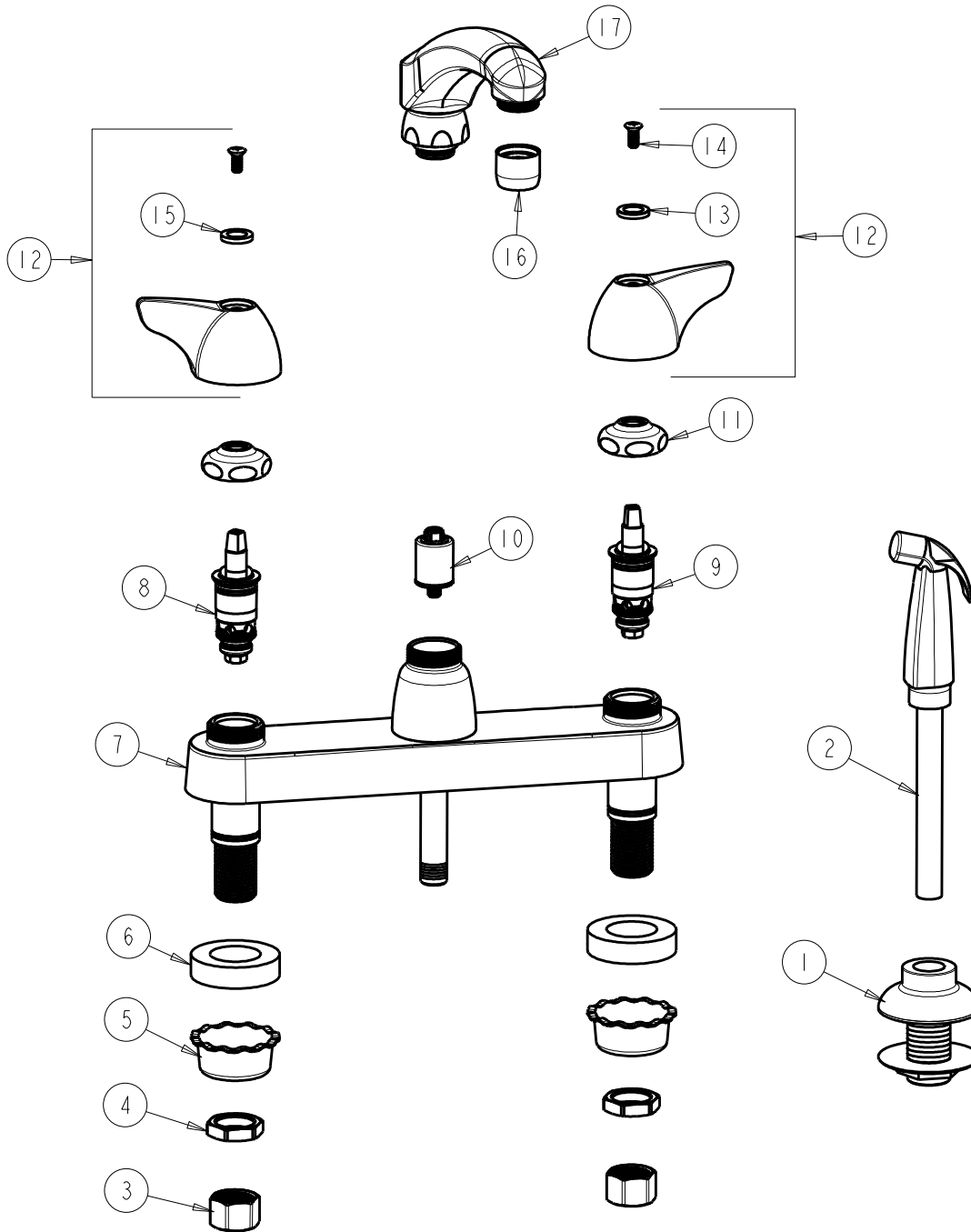
SUBMITTED MODEL NO.

ITEM NO.

FOR TECHNICAL ASSISTANCE
1-800-TEC-TRUE (1-800-832-8783)

BY: JAR DATE: 10-17-11

CHK: *[Signature]* REV:



ITEM	PART NO.	DESCRIPTION	ITEM	PART NO.	DESCRIPTION
1	1103-014KJKNF	FLANGE ASSEMBLY	10	1103-006JKNF	DIVERTER VALVE
2	1103-009KJKNF	SPRAY AND HOSE ASSEMBLY	11	1-214JKCP	CAP
3	49-005JKRBF	COUPLING NUT	12	1000-PRJKCP	WING HANDLE ASSEMBLY (PAIR)
4	49-004JKRBF	LOCKNUT	13	633-123JKNF	INDEX BUTTON (BLUE)
5	1797-114JKNF	BASIN COCK WASHER	14	420-010JKRCF	SCREW, 10-32 UNC PH 1/2
6	555-313JKNF	WASHER	15	633-023JKNF	INDEX BUTTON (RED)
7	—	VALVE BODY NOT SOLD SEPARATELY	16	E35JKCP	SOFTFLO AERATOR 1.5 GPM
8	1-100XTJKABNF	QUATURN UNIT (LH)	17	L8LESSE3JKCP	CAST SPOUT
9	1-099XTJKABNF	QUATURN UNIT (RH)			