

**CHICAGO FAUCETS**  
a Geberit company

2100 South Clearwater Drive  
Des Plaines, IL 60018  
Phone: 847-803-5000  
Fax: 847-803-5454  
www.chicagofaucets.com

**REPAIR PARTS**

BY: SID DATE: 05-29-12  
CHK: *[Signature]* REV:

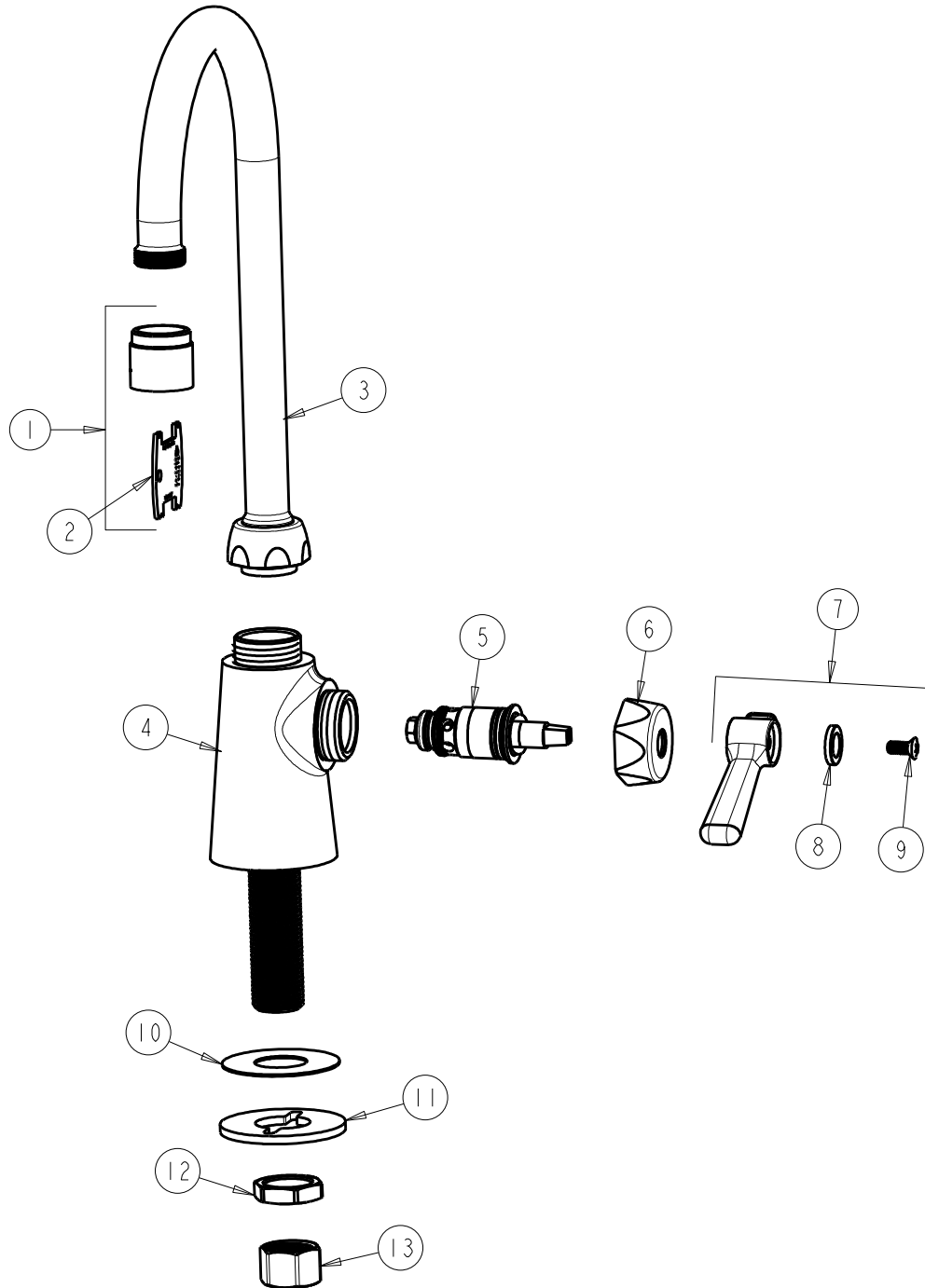
FITTING NO.

**350-E35VPABCP**

SUBMITTED MODEL NO.

ITEM NO.

**FOR TECHNICAL ASSISTANCE**  
1-800-TEC-TRUE (1-800-832-8783)



ITEM	PART NO.	DESCRIPTION	ITEM	PART NO.	DESCRIPTION
1	E35VPJKCP	SOFTFLO AERATOR 1.5GPM VR	8	633-123JKNF	INDEX BUTTON (BLUE)
2	3-024JKRCF	KEY, VP	9	420-010JKRCF	SCREW, 10-32 UNC PH 1/2
3	GN2AJKABCP	GN SPOUT PLAIN END	10	52-007JKNF	WASHER, RUBBER
4	---	VALVE BODY (NOT SOLD SEPARATELY)	11	807-112JKNF	WASHER
5	1-099XTJKABNF	QUATURN CARTRIDGE (RH)	12	49-004JKRBF	LOCKNUT
6	444-005JKCP	CAP	13	49-005JKRBF	COUPLING NUT
7	369-COLDJKCP	LEVER HANDLE ASSEMBLY			