

CHICAGO FAUCETS
a Geberit company

2100 South Clearwater Drive
Des Plaines, IL 60018
Phone: 847-803-5000
Fax: 847-803-5454
www.chicagofaucets.com

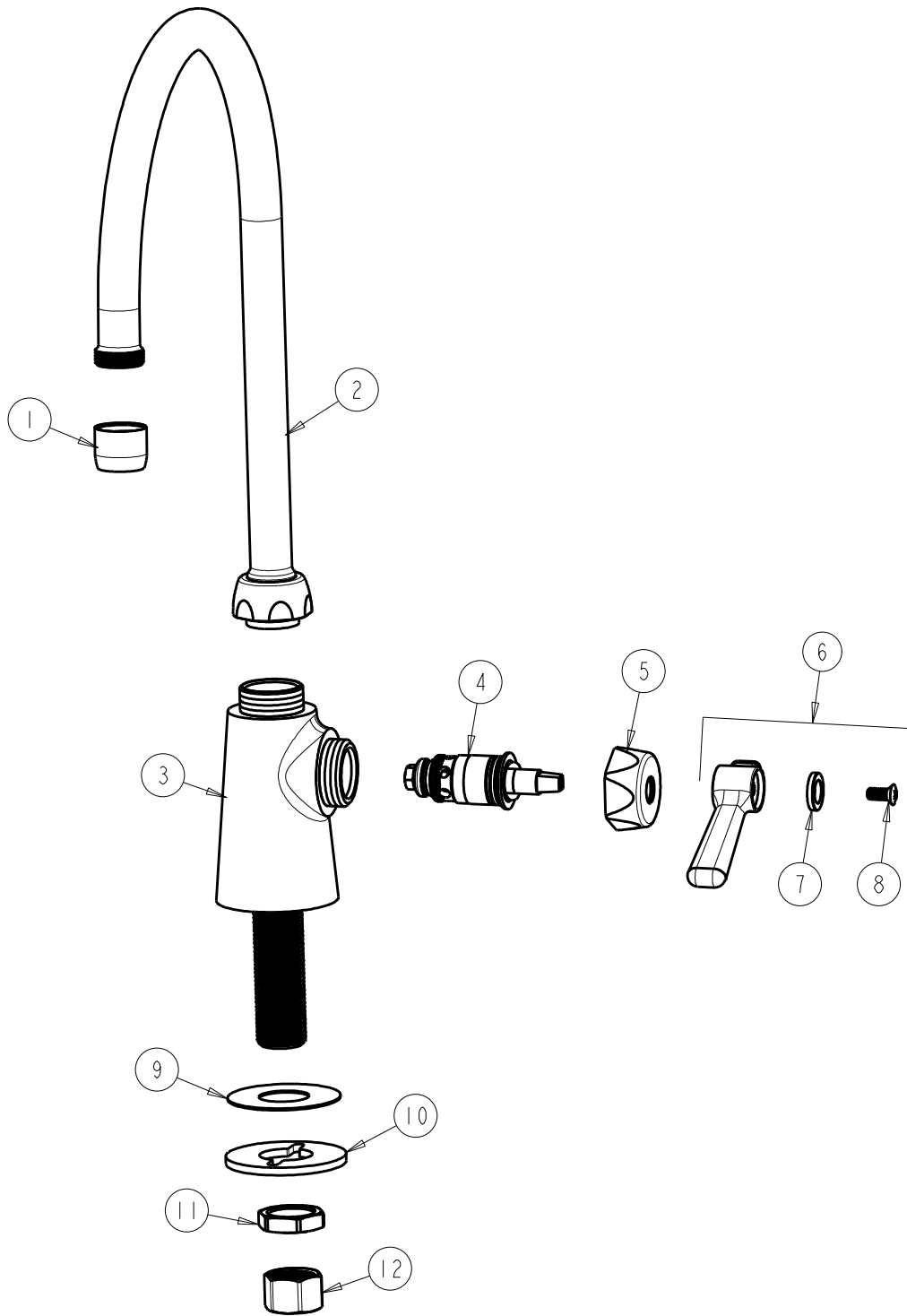
REPAIR PARTS

BY: SID DATE: 05-29-12
CHK: *[Signature]* REV:

FITTING NO.
350-GN8AE35ABCP
SUBMITTED MODEL NO.

FOR TECHNICAL ASSISTANCE
1-800-TEC-TRUE (1-800-832-8783)

ITEM NO.



ITEM	PART NO.	DESCRIPTION	ITEM	PART NO.	DESCRIPTION
1	E35JKCP	SOFTFLO AERATOR 1.5 GPM	7	633-123JKNF	INDEX BUTTON (BLUE)
2	GN8AJKABCP	SPOUT	8	420-010JKRCF	SCREW, 10-32 UNC PH 1/2
3	---	VALVE BODY (NOT SOLD SEPARATELY)	9	52-007JKNF	WASHER, RUBBER
4	1-099XTJKABNF	QUATURN CARTRIDGE (RH)	10	807-112JKNF	WASHER
5	444-005JKCP	CAP	11	49-004JKRBF	LOCKNUT
6	369-COLDJKCP	LEVER HANDLE ASSEMBLY	12	49-005JKRBF	COUPLING NUT