

CHICAGO FAUCETS 

a Geberit company

2100 South Clearwater Drive
Des Plaines, IL 60018
Phone: 847-803-5000
Fax: 847-803-5454
www.chicagofaucets.com

REPAIR PARTS

BY: JAR DATE: 11-26-07
CHK:  REV:

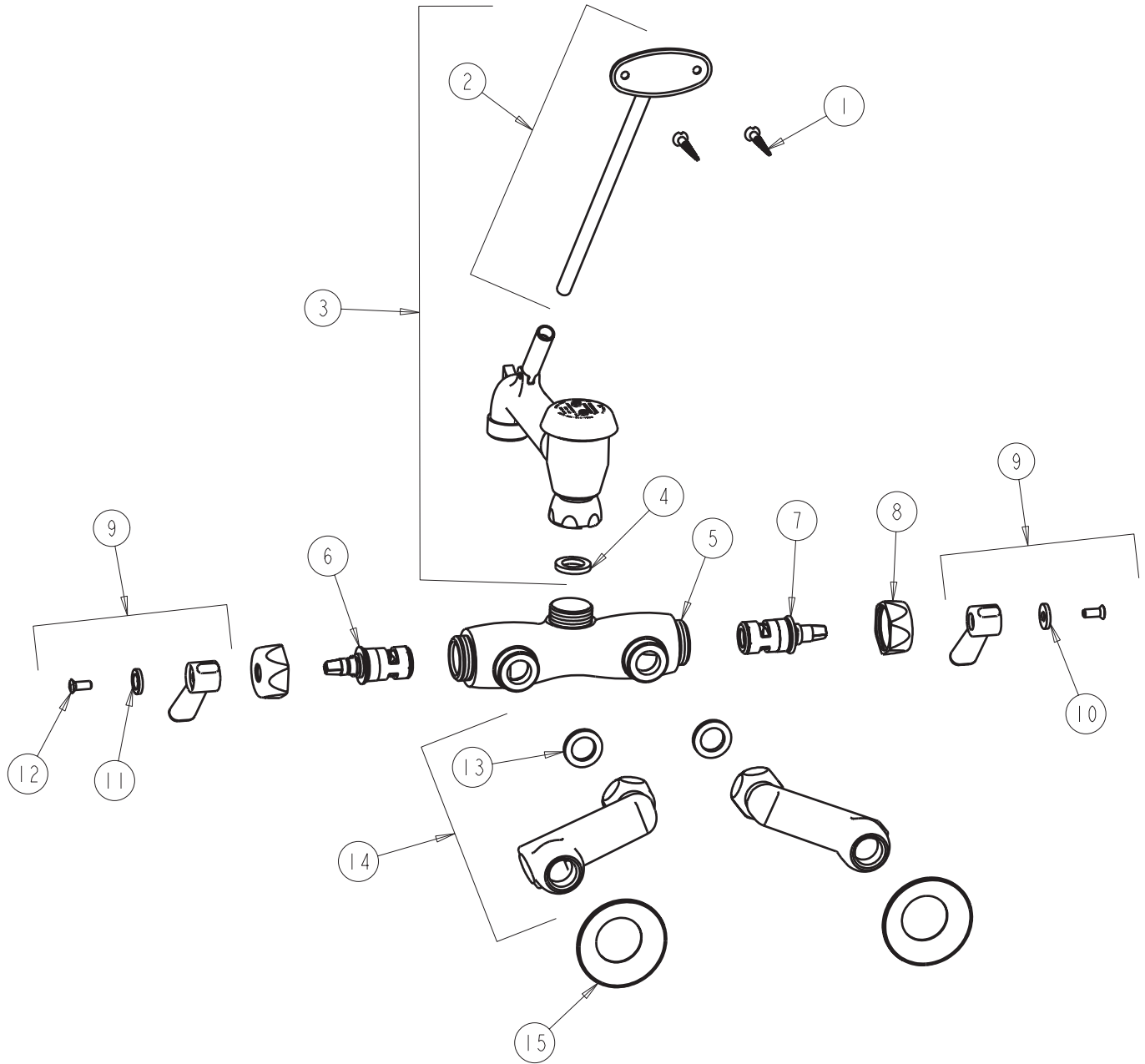
FITTING NO.

445-897SRCXKCP

SUBMITTED MODEL NO.

ITEM NO.

FOR TECHNICAL ASSISTANCE
1-800-TEC-TRUE (1-800-832-8783)



ITEM	PART NO.	DESCRIPTION	ITEM	PART NO.	DESCRIPTION
1	173-006JKCP	FLAT HEAD WOOD SCREW (1)	9	389-PRJKCP	LEVER HANDLE ASSEMBLY (PAIR)
2	175-002KJKCP	BRACE ROD ASSEMBLY	10	633-023JKNF	INDEX BUTTON (RED)
3	897-SJKCP	VB SPOUT B TYPE END	11	633-123JKNF	INDEX BUTTON (BLUE)
4	340-004JKNF	CELCON WASHER	12	420-010JKRCF	SCREW, 10-32 UNC PH 1/2
5	-----	VALVE BODY (NOT SOLD SEPARATELY)	13	1-011JKNF	WASHER
6	1-099XKJKNF	RH CERAMIC QUATURN UNIT	14	RCJKCP	ARM W/ BUILT-IN SHUT-OFF & CHECK
7	1-100XKJKNF	LH CERAMIC QUATURN UNIT	15	1-055JKCP	FLANGE
8	444-005JKCP	CAP			