

**CHICAGO FAUCETS**  
 a Geberit company

2100 South Clearwater Drive  
 Des Plaines, IL 60018  
 Phone: 847-803-5000  
 Fax: 847-803-5454  
 www.chicagofaucets.com

**REPAIR PARTS**

BY: JAR    DATE: 10-25-11  
 CHK: *[Signature]*    REV:

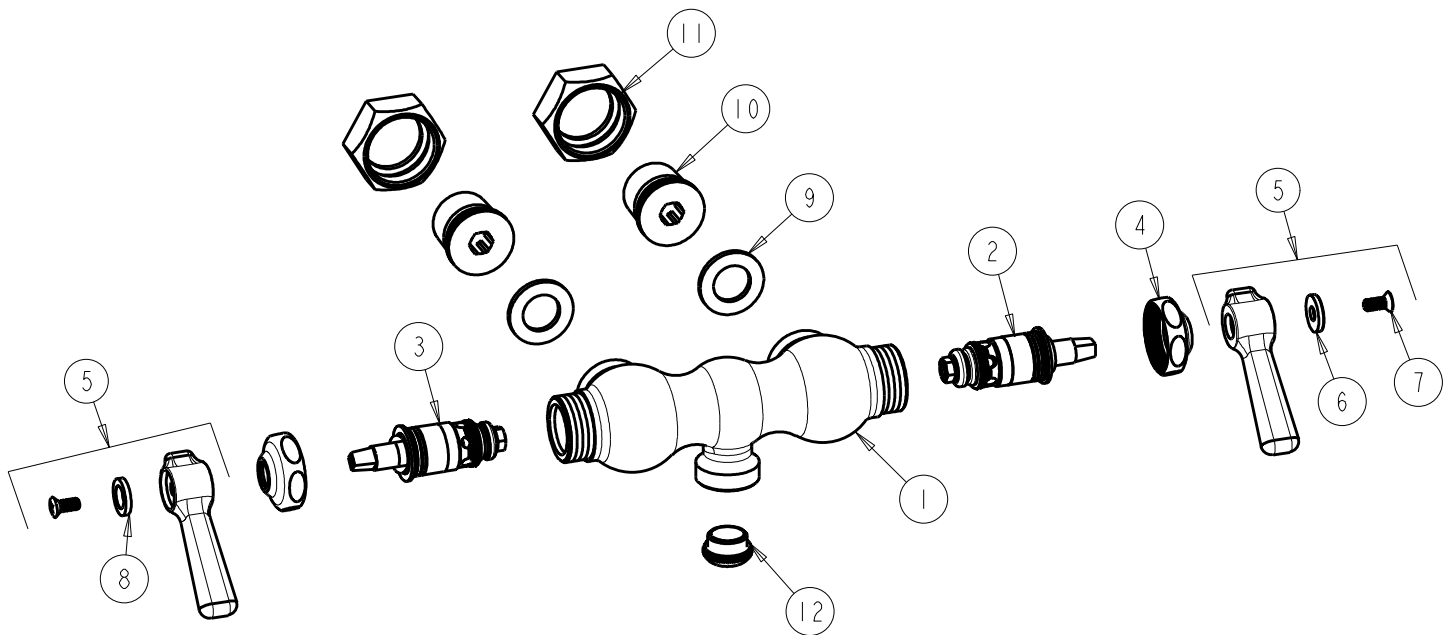
FITTING NO.

**65-ABCP**

SUBMITTED MODEL NO.

ITEM NO.

**FOR TECHNICAL ASSISTANCE**  
 1-800-TEC-TRUE (1-800-832-8783)



ITEM	PART NO.	DESCRIPTION
1	----	BODY VALVE (NOT SOLD SEPARATELY)
2	1-099XTJKABNF	QUATURN CARTRIDGE (RH)
3	1-100XTJKABNF	QUATURN CARTRIDGE (LH)
4	1-214JKCP	CAP
5	369-PRJKCP	LEVER HANDLE ASSEMBLY (PAIR)
6	633-123JKNF	INDEX BUTTON (BLUE)
7	420-010JKRCF	SCREW, 10-32 UNC PH 1/2
8	633-023JKNF	INDEX BUTTON (RED)
9	65-006JKNF	WASHER
10	65-004JKABRCF	TAILPIECE
11	65-003JKCP	NUT
12	E1MJKABRCF	QUIXTOP OUTLET