

CHICAGO FAUCETS
a Geberit company

2100 South Clearwater Drive
Des Plaines, IL 60018
Phone: 847-803-5000
Fax: 847-803-5454
www.chicagofaucets.com

REPAIR PARTS

BY: JAR DATE: 09-15-09
CHK: *JAR* REV:

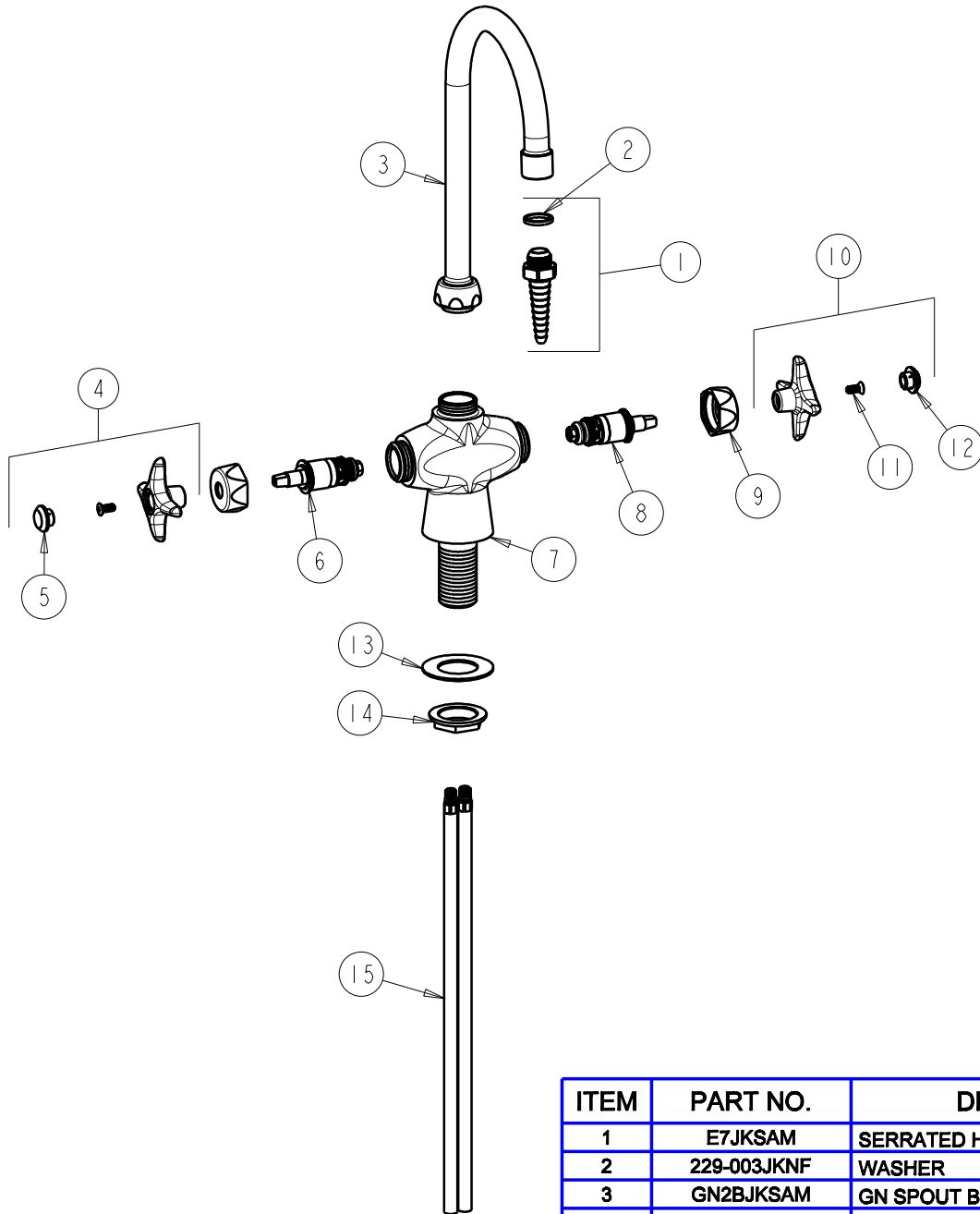
FITTING NO.

929-SAM

SUBMITTED MODEL NO.

ITEM NO.

FOR TECHNICAL ASSISTANCE
1-800-TEC-TRUE (1-800-832-8783)



ITEM	PART NO.	DESCRIPTION
1	E7JKSAM	SERRATED HOSE NOZZLE
2	229-003JKNF	WASHER
3	GN2BJKSAM	GN SPOUT B TYPE END
4	204-HWJKSAM	HANDLE ASSEMBLY (HW)
5	216-128JKNF	BUTTON 'HW'
6	217-XTLHJKNF	CARTRIDGE, SLO-COMPRESSION
7	—	VALVE BODY (NOT SOLD SEPARATELY)
8	217-XTRHJKNF	CARTRIDGE, SLO-COMPRESSION
9	444-005JKSAM	CAP
10	204-CWJKSAM	METAL CROSS HANDLE (CW)
11	420-010JKRCF	SCREW, 10-32 UNC PH 1/2
12	216-178JKNF	BUTTON 'CW'
13	50-014JKNF	STEEL WASHER
14	50-003JKRBF	LOCKNUT
15	50-101KJKNF	SUPPLY TUBE ASSEMBLY