

**CHICAGO FAUCETS**  
a Geberit company

2100 South Clearwater Drive  
Des Plaines, IL 60018  
Phone: 847-803-5000  
Fax: 847-803-5454  
www.chicagofaucets.com

**REPAIR PARTS**

FITTING NO.

**930-GN8BVBCP**

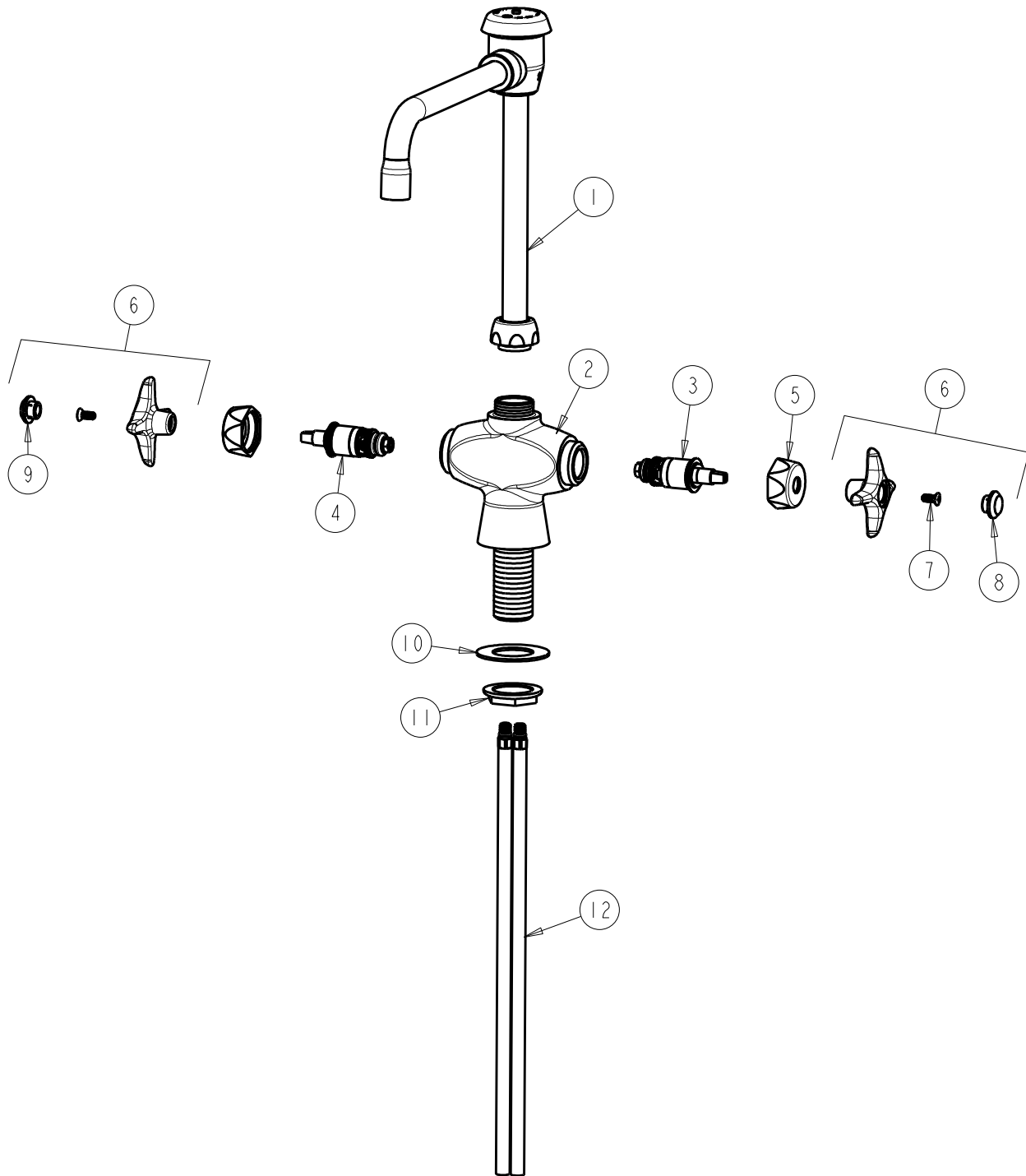
SUBMITTED MODEL NO.

ITEM NO.

BY: SID DATE: 10-24-11

CHK: *[Signature]* REV:

**FOR TECHNICAL ASSISTANCE**  
1-800-TEC-TRUE (1-800-832-8783)



ITEM	PART NO.	DESCRIPTION	ITEM	PART NO.	DESCRIPTION
1	GN8BVBJKCP	VACUUM BREAKER SWING SPOUT	7	420-010JKRCF	SCREW, 10-32 UNC PH 1/2
2	-----	VALVE BODY (NOT SOLD SEPARATELY)	8	216-178JKNF	BUTTON 'CW'
3	217-XTRHJKNF	CARTRIDGE, SLO-COMPRESSION (RH)	9	216-128JKNF	BUTTON 'HW'
4	217-XTLHJKNF	CARTRIDGE, SLO-COMPRESSION (LH)	10	50-014JKNF	STEEL WASHER
5	444-005JKCP	CAP	11	50-003JKRBF	LOCKNUT
6	204-PRJKCP	HANDLE ASSEMBLY (PAIR)	12	50-101KJKNF	SUPPLY TUBE ASSEMBLY