

CHICAGO FAUCETS
a Geberit company

2100 South Clearwater Drive
Des Plaines, IL 60018
Phone: 847-803-5000
Fax: 847-803-5454
www.chicagofaucets.com

REPAIR PARTS

FITTING NO.

952-633PLCP

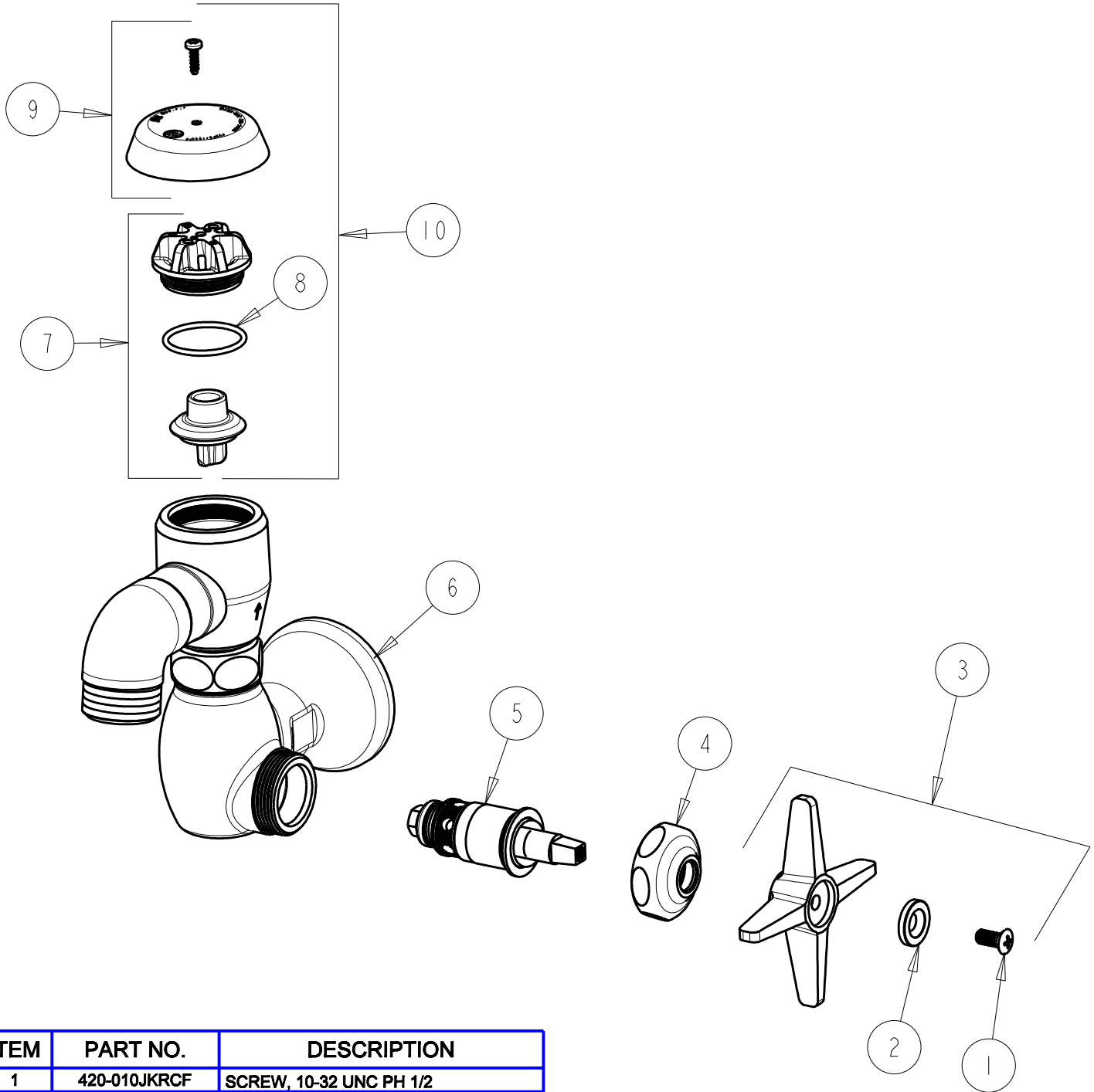
SUBMITTED MODEL NO.

BY: SID DATE: 01-09-08

CHK: *[Signature]* REV: 08-20-12

ITEM NO.

FOR TECHNICAL ASSISTANCE
1-800-TEC-TRUE (1-800-832-8783)



ITEM	PART NO.	DESCRIPTION
1	420-010JKRCF	SCREW, 10-32 UNC PH 1/2
2	633-223JKNF	INDEX BUTTON (WHITE)
3	633-PLJKCP	4-ARM CROSS HANDLE
4	1-214JKCP	CAP
5	217-XTLHJKNF	CARTRIDGE, SLO-COMPRESSION (LH)
6	---	VALVE BODY (NOT SOLD SEPARATELY)
7	892-302KJKNF	VACUUM BREAKER REPAIR KIT
8	80-007JKNF	O RING 0.989 X .070
9	892-254KJKCP	VACUUM BREAKER COVER w/SCREW
10	892-402KJKNF	KIT, VACUUM BREAKER ASSEMBLY