



2100 South Clearwater Drive  
Des Plaines, IL 60018  
Phone: 800-566-2100  
Fax: 847-803-5454  
www.geberitnorthamerica.com

# REPAIR PARTS

FITTING NO.

**TURN CONTROL PVC BWO**

SUBMITTED MODEL NO.

BY: SID

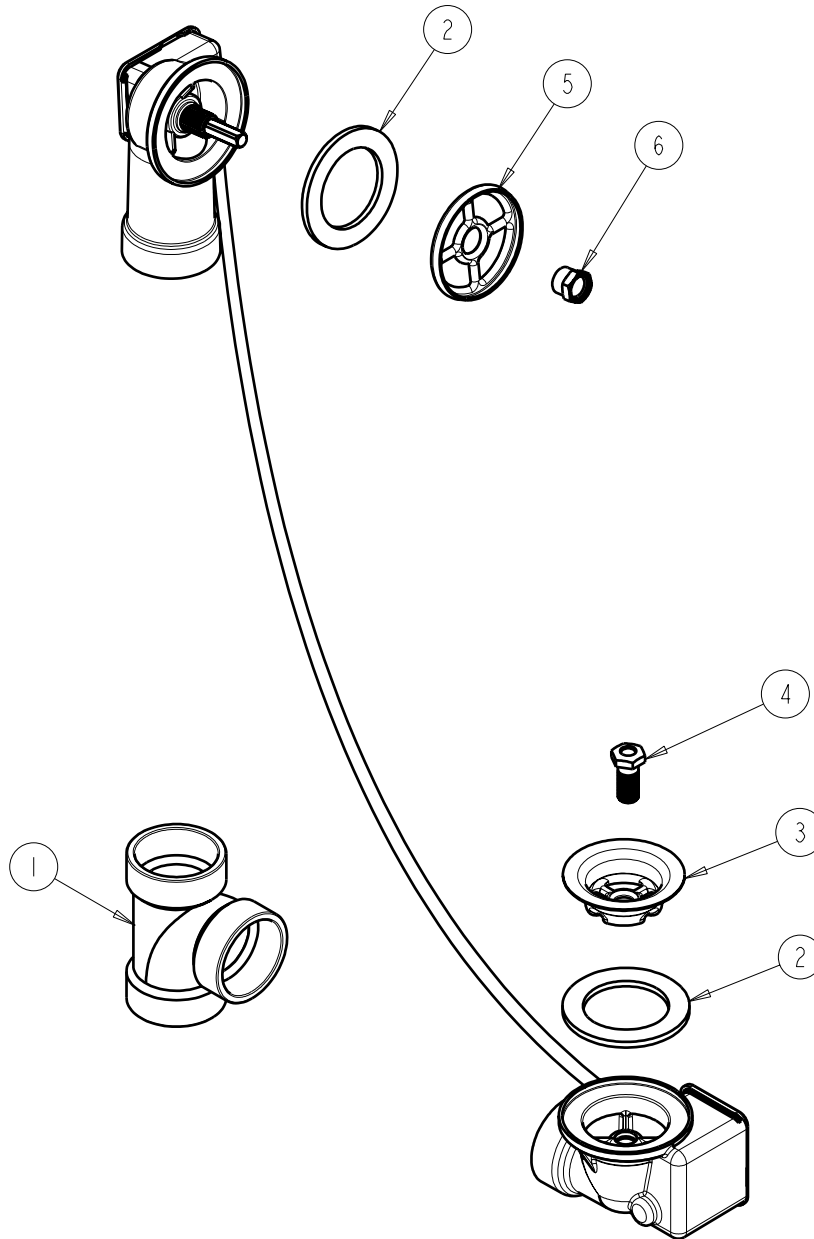
DATE: 04-23-08

CHK: *[Signature]*

REV:

ITEM NO.

**FOR TECHNICAL ASSISTANCE**  
1-800-TEC-TRUE (1-800-832-8783)



ITEM	PART NO.	DESCRIPTION
1	241.625.00.1	TEE SANITARY PVC
2	241.615.00.1	GASKET PROFILE EPDM 60 D73x49x7
3	241.768.00.1	STRAINER, STAINLESS STEEL
4	865.066.22.1	DRAIN SCREW
5	241.616.00.1	FLANGE OVERFLOW
6	241.617.00.1	NUT OVERFLOW, BRASS