

KRAUS Brand Kitchen Faucets Limited Lifetime Warranty

KRAUS is proud to offer its customers the strongest, most durable ceramic cartridges in all solid brass Kitchen Faucets it manufactures. KRAUS guarantees all products to be free of defect in materials and craftsmanship. All KRAUS BRAND Kitchen Faucets carry a limited lifetime warranty from the original date of purchase.

If a product fails due to defect in material or craftsmanship during the warranty period, KRAUS will repair or replace the items at its sole discretion. Warranty does not apply when the item has been tampered with, misused, improperly installed, altered, or damaged due to abuse or accident. Proof of purchase (original sales receipt) must be provided to KRAUS for all warranty claims. Please contact one of our representatives if you need any additional details.

All KRAUS products must be installed by a licensed professional plumber or contractor to avoid any improper use or installation.

IN NO EVENT SHALL KRAUS BE LIABLE FOR ANY INCIDENTAL, CONSEQUENTIAL OR SPECIAL DAMAGES, INSTALLATION COST, LABOR, TRAVEL TIME, FREIGHT COSTS INCURRED, LOST PROFITS, OR CONTINGENT LIABILITIES.

KRAUS USA Inc. makes no representation that its products comply with any or all local building or plumbing codes. It is the consumer's responsibility to determine local code compliance.

This warranty extends to the original purchaser and first consumer.



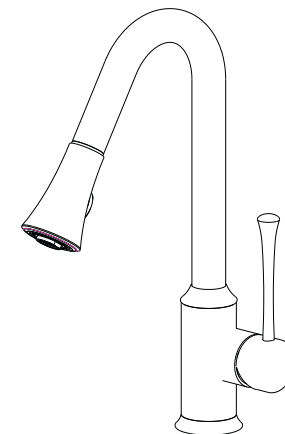
Exquisite Collection Installation Manual

Single-lever kitchen faucet

Dear Valued Customer,

Kraus would like to take this opportunity to thank you for purchasing Kraus products. It is our sincere hope that you are completely satisfied with your new purchase. We welcome any questions or comments you may have, and look forward to assisting you in the future.

Sincerely,
Kraus customer service department.

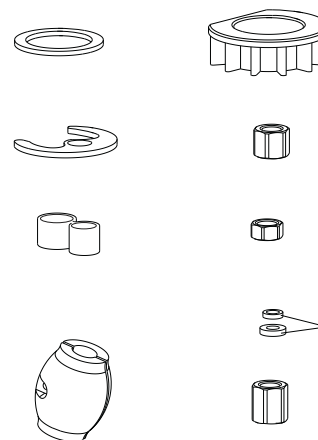


Before Your Installation

Check to make sure you have the following parts indicated below

Model

KPF-1650



Tools You Will Need



Adjustable wrench



Adjustable wrench



Phillips screwdriver



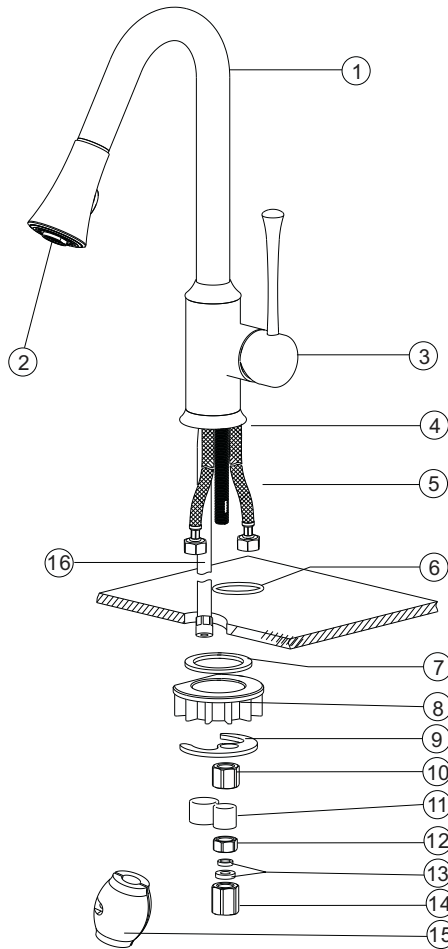
Pipe tape



Spanner for body

Replacement Parts

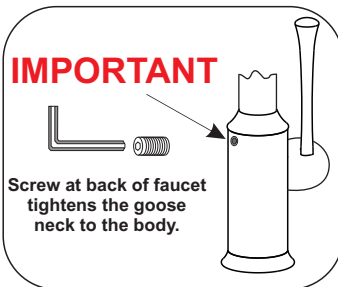
Keep this manual for ordering replacement parts.



1. Spout
2. Aerator
3. Handle
4. Mounting bolt
5. Waterlines
6. O-Ring
7. Rubber washer
8. Faucet extender
9. Rubber washer
10. Fixing nut
11. Plastic enclosure
12. Fixing Nut
13. Rubber washer
14. Connecting nut
15. Weight
16. Hose

IMPORTANT

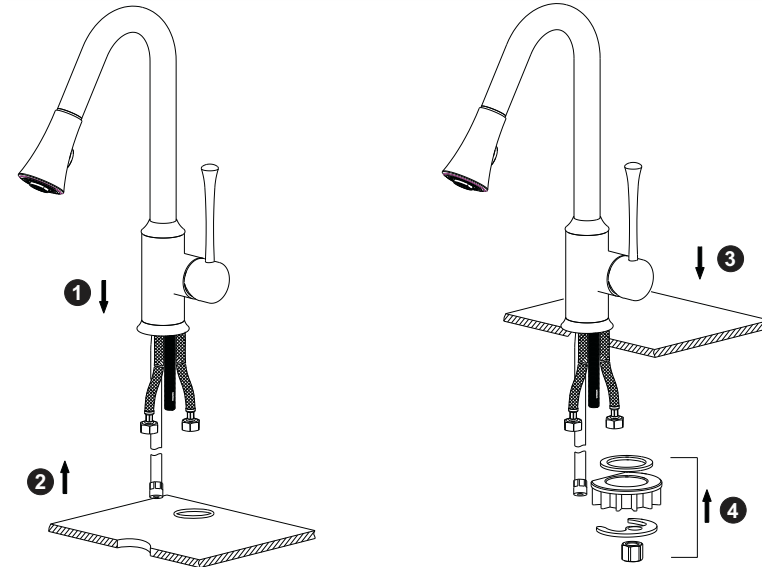
Screw at back of faucet tightens the goose neck to the body.



Trouble - Shooting

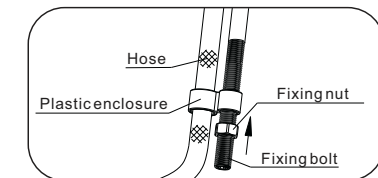
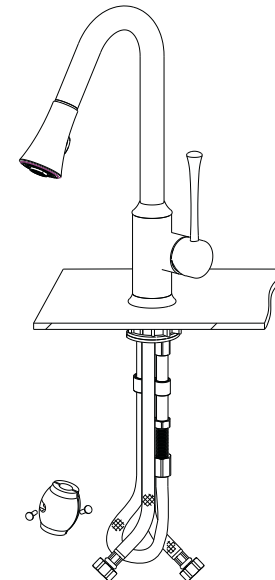
Problem	Cause	Action
Leaks underneath handle	Adjusting ring or cap has come loose.	Tighten the adjusting ring or cap.
Aerator leaks or has an inconsistent water flow pattern.	Aerator is dirty or misfitted.	Unscrew the aerator to check rubber packing or replace the aerator.
Water will not shut off completely.	Dirty or worn out plastic washer in the cartridge.	Remove handle and cartridge to check if ceramic disk is damage permanently or dirty. Re-install cartridge.

Installation



Screw waterlines 5 into the corresponding holes of the faucet body. Fit o-ring 6 into the bottom groove of Faucet body.

Insert waterlines 5, mounting bolt 4, and hose 16 into the 1 3/8" drilled hole of the counter top. Put on rubber washer 7, faucet extender 8 and rubber washer 9. Adjust faucet body 1 properly and tighten fixing nut 10 securely.



Insert plastic enclosure 11 through the hose 16, put it on to the mounting bolt 4 and tighten with fixing nut 12. (Picture 1) Then connect and fix the hose 16 with mounting bolt using connecting nut 14. (Picture 2) Finally, place the weight 15 on hose 16 and tighten the screw with a screw driver.

