

# Multi-Horsepower Motors – PSC

**5½** inch dia. MARS SERIES **118**



## Multi-Horsepower Condenser Fan Motors Ball Bearing - 70°C

MARS 70°C multi-horsepower SunSlinger condenser fan motors are ideal for truck stock. They are designed to provide reliable operation in a wide range of ambient temperatures. Three 1075 RPM models cover 208-230 volt applications from 1/6 to 1/2 HP. Two 825 RPM models cover 208-230 volt applications from 1/8 to 1/3 HP.

### Features:

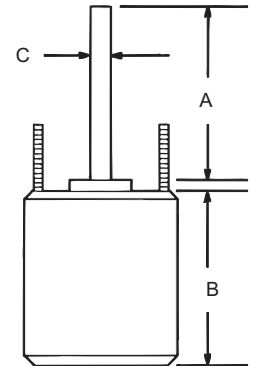
- All angle, ball bearing
- Rheem shell mounting holes with screws installed
- Trane 4.33 bolt circle mounting holes with self tapping screws
- Reversible rotation
- Thru bolt or band mounting
- Water slinger on shaft
- Extra set of nuts on mounting studs

### Specifications:

- Class "B" insulation
- Single phase, 60 Hertz
- 70°C/158°F
- 36 inch leads
- Thermal overload protected
- Fan duty, continuous, air over
- Totally enclosed

### 20458 & 20459:

- Short shell length
- Just ONE capacitor rating per motor
- Quick & Simple 2 wire installation



### Cross Reference

MARS No.	US Motors/ Emerson	Century/ AO Smith	GE/Genteq	York Source 1
20458	3323H	ORM5458BF	3458HS	
20459		ORM5488BF	3459HS	
20465	5462H		3465HS	S1-FHM3465HT
20468	5465H	ORM5459BF	3468HS	
20469	5464H		3469HS	S1-FHM3469HT

### Multi-Horsepower, Reversible Rotation

MARS NO.	HP	RPM/ SPDS	VOLTS	AMPS	CAP REQUIRED	ENCL.	BRG.	DIMENSIONS		
								A	B	C
<b>The Wiz</b> 20458	1/6-1/3	1075	208-230	2.8	7.5/370	TEAO	Ball	6.50	5.00	1/2
20459	1/8-1/3	825	208-230	1.9	10/370	TEAO	Ball	6.50	5.71	1/2
20465	1/6-1/3	1075/2	208-230	2.5	5/7.5/370	TEAO	Ball	7.00	5.16	1/2
20468	1/5-1/2	1075/2	208-230	3.6	10/12.5/370	TEAO	Ball	5.00	6.10	1/2
20469	1/6-1/3	825/2	208-230	1.9	10/7.5/370	TEAO	Ball	5.00	6.10	1/2

### One-On-One™ Replacement Motor for Emerson 5462H

MARS NO.	HP	ROT	RPM/ SPDS	VOLTS	AMPS	CAP REQUIRED	ENCL.	BRG.	DIMENSIONS		
									A	B	C
20462	1/3, 1/4, 1/5, 1/6	REV	1075/2	208-230	2.0	5/7.5/370	TEAO	Ball	5.00	4.91	1/2

### One-On-One™ Replacement Motor for Emerson 5482H

MARS NO.	HP	ROT	RPM/ SPDS	VOLTS	AMPS	CAP REQUIRED	ENCL.	BRG.	DIMENSIONS		
									A	B	C
20471	1/4, 1/3, 1/2, 3/4	REV	1075/2	208-230	4.2/3.6	15/370	TEAO	Ball	5.5	6.5	1/2

### One-On-One™ Replacement Motor for AO Smith FE6003F

MARS NO.	HP	ROT	RPM/ SPDS	VOLTS	AMPS	CAP REQUIRED	ENCL.	BRG.	DIMENSIONS		
									A	B	C
20470	1/4, 1/2	REV	825/2	208-230	2.6	10/12.5/370	TEAO	Ball	6.5	6.1	1/2

### One-On-One™ Replacement Motor for AO Smith ORM5854BF

MARS NO.	HP	ROT	RPM/ SPDS	VOLTS	AMPS	CAP REQUIRED	ENCL.	BRG.	DIMENSIONS		
									A	B	C
20457	1/8, 1/10, 1/12, 1/15	REV	825/1	208-230	0.75	7.5/370	TEAO	Ball	6.5	4.7	1/2

### One-On-One™ Replacement Motor for AO Smith ORM5454BF

MARS NO.	HP	ROT	RPM/ SPDS	VOLTS	AMPS	CAP REQUIRED	ENCL.	BRG.	DIMENSIONS		
									A	B	C
20463	1/8 - 1/15	REV	1075/1	208-230	0.65	5/370	TEAO	Ball	6.5	4.4	1/2