

WIRING INSTRUCTIONS

TITLE

D-HANDLE DRILL

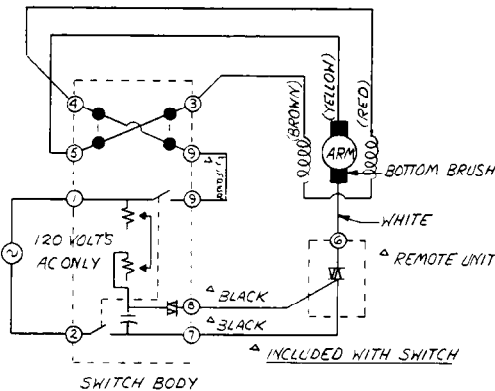
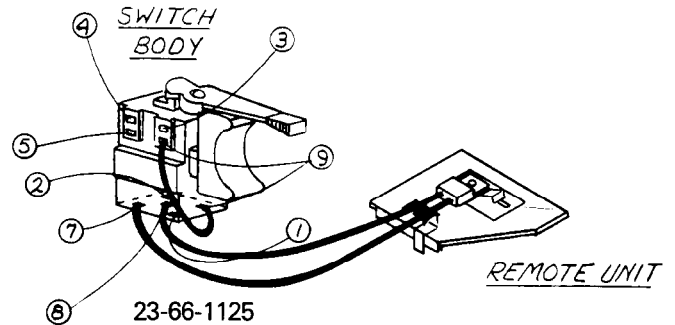
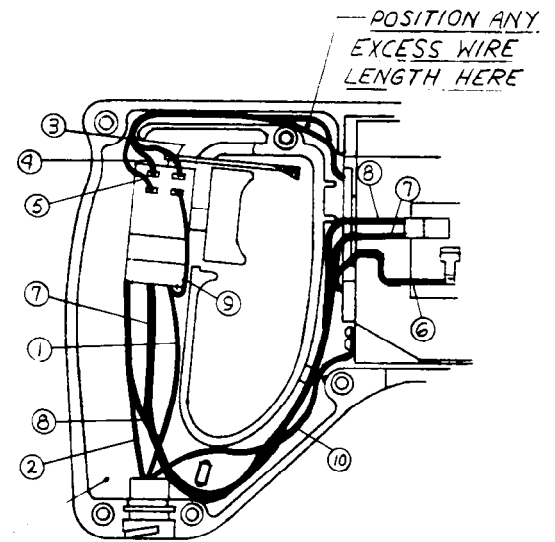
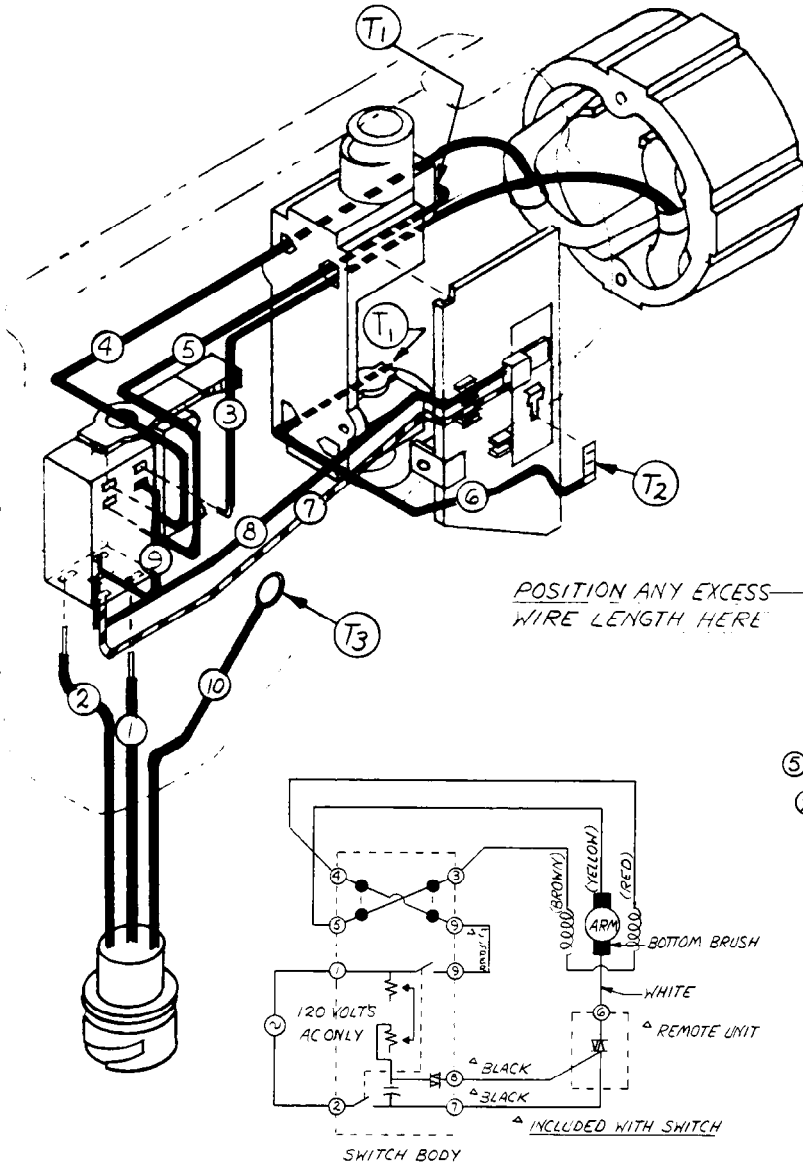
BULLETIN

MILWAUKEE ELECTRIC TOOL CORP.

13135 WEST LISBON RD. BROOKFIELD, WIS

DATE
May '85

58-01-0247



WIRING SPECIFICATIONS

Wire No.	Wire Color	Origin or Gauge	Length	Terminals, Connectors and 1 or 2 End Wire Preparation.
1	WHITE	*	—	COMPONENT OF PIN HSG. ASSY.
2	WHITE	*	—	COMPONENT OF PIN HSG. ASSY.
3	BROWN	FIELD	8-3/8"	STRIP 3/8" AND TIN.
4	RED	FIELD	8-1/4"	STRIP 3/8" AND TIN.
5	YELLOW	18	7-3/4"	STRIP 3/8" AND TIN/STRIP 1/4" FOR T1
6	WHITE	18	5"	STRIP 1/4" FOR T1/STRIP 3/16" FOR T2
7	BLACK	—	—	SUPPLIED WITH SWITCH
8	BLACK	—	—	SUPPLIED WITH SWITCH
9	BLACK	—	—	SUPPLIED WITH SWITCH
10	GREEN	*	—	COMPONENT OF PIN HSG. ASSY.

NOTE:

All leads must be held to $\pm 1/8"$.
All field leads to be measured from and perpendicular to laminations.
All lead lengths are before stripping.

TERMINAL DESCRIPTION

Code	Part No.	Qty.
T1	22-44-0090	2
T2	23-74-0615	1
T3	23-74-0896	1

CONNECTOR DESCRIPTION

Code	Part No.	Qty.