

# WIRING INSTRUCTIONS

**TITLE** 5387-20 1/2" HAMMER-DRILL  
**MILWAUKEE ELECTRIC TOOL CORP. 13135 WEST LISBON RD. BROOKFIELD, WIS.**

**DATE**  
 Mar. 2005

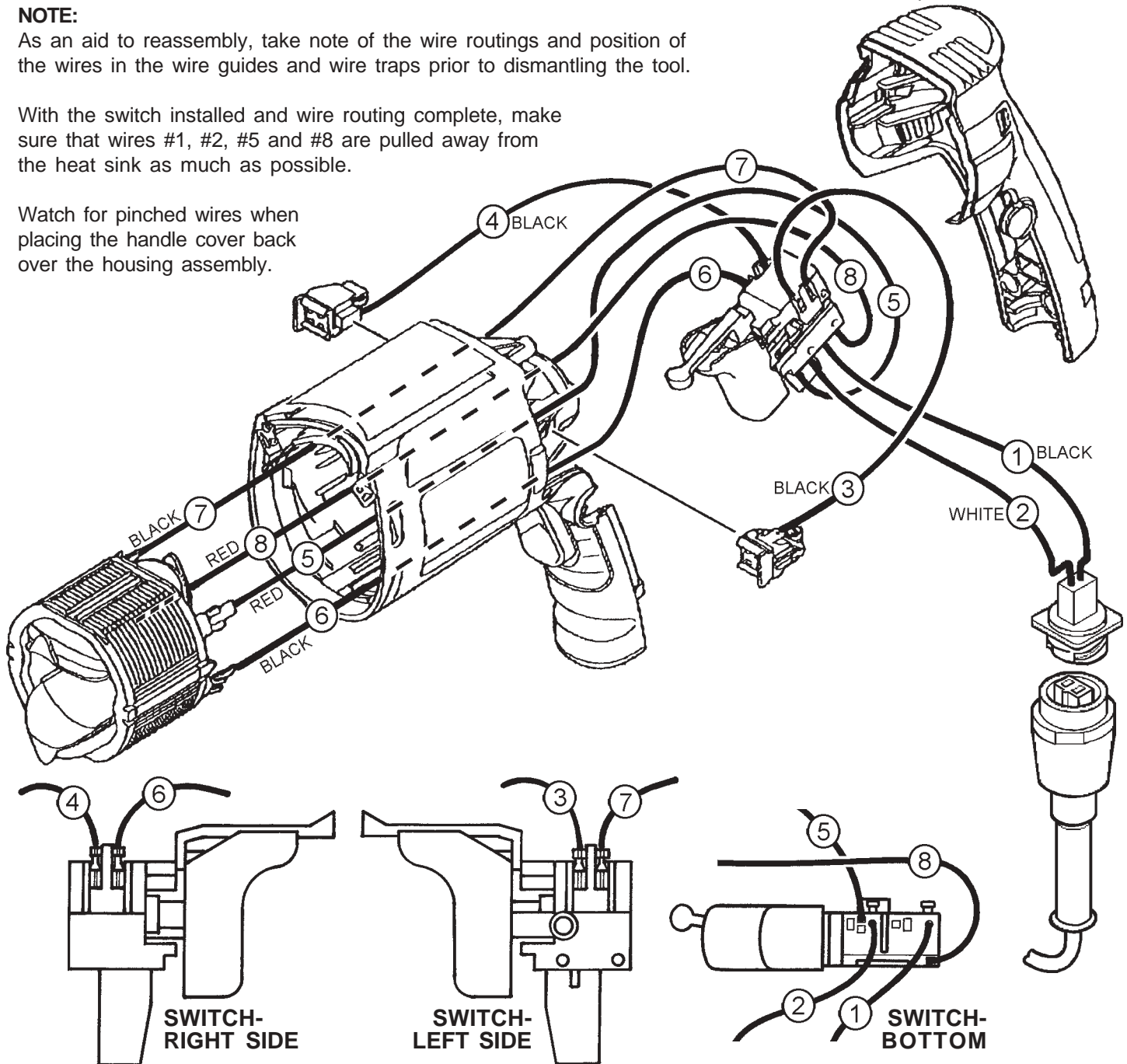
**BULLETIN**  
 58-01-0127

**NOTE:**

As an aid to reassembly, take note of the wire routings and position of the wires in the wire guides and wire traps prior to dismantling the tool.

With the switch installed and wire routing complete, make sure that wires #1, #2, #5 and #8 are pulled away from the heat sink as much as possible.

Watch for pinched wires when placing the handle cover back over the housing assembly.



WIRING SPECIFICATIONS				
Wire No.	Wire Color	Origin or Gauge	Length	Terminals, Connectors and 1 or 2 End Wire Preparation
1	Black	----	----	Component of the quik-lok cord set, 48-76-5010.
2	White	----	----	Component of the quik-lok cord set, 48-76-5010.
3	Black	----	----	23-94-0041 Leadwire Assembly.
4	Black	----	----	23-94-0041 Leadwire Assembly.
5	Red	----	----	23-94-0043 Leadwire Assembly.
6	Black	----	----	23-94-0042 Leadwire Assembly.
7	Black	----	----	23-94-0042 Leadwire Assembly.
8	Red	----	----	23-94-0044 Leadwire Assembly.

**NOTE:**  
 All leads must be held to  $\pm 1/16"$ .  
 All lead lengths are before stripping.

TERMINAL DESCRIPTION		
Code	Part No.	Qty.
CONNECTOR DESCRIPTION		

**BULK LEAD WIRE - BULLETIN 58-01-0003**