



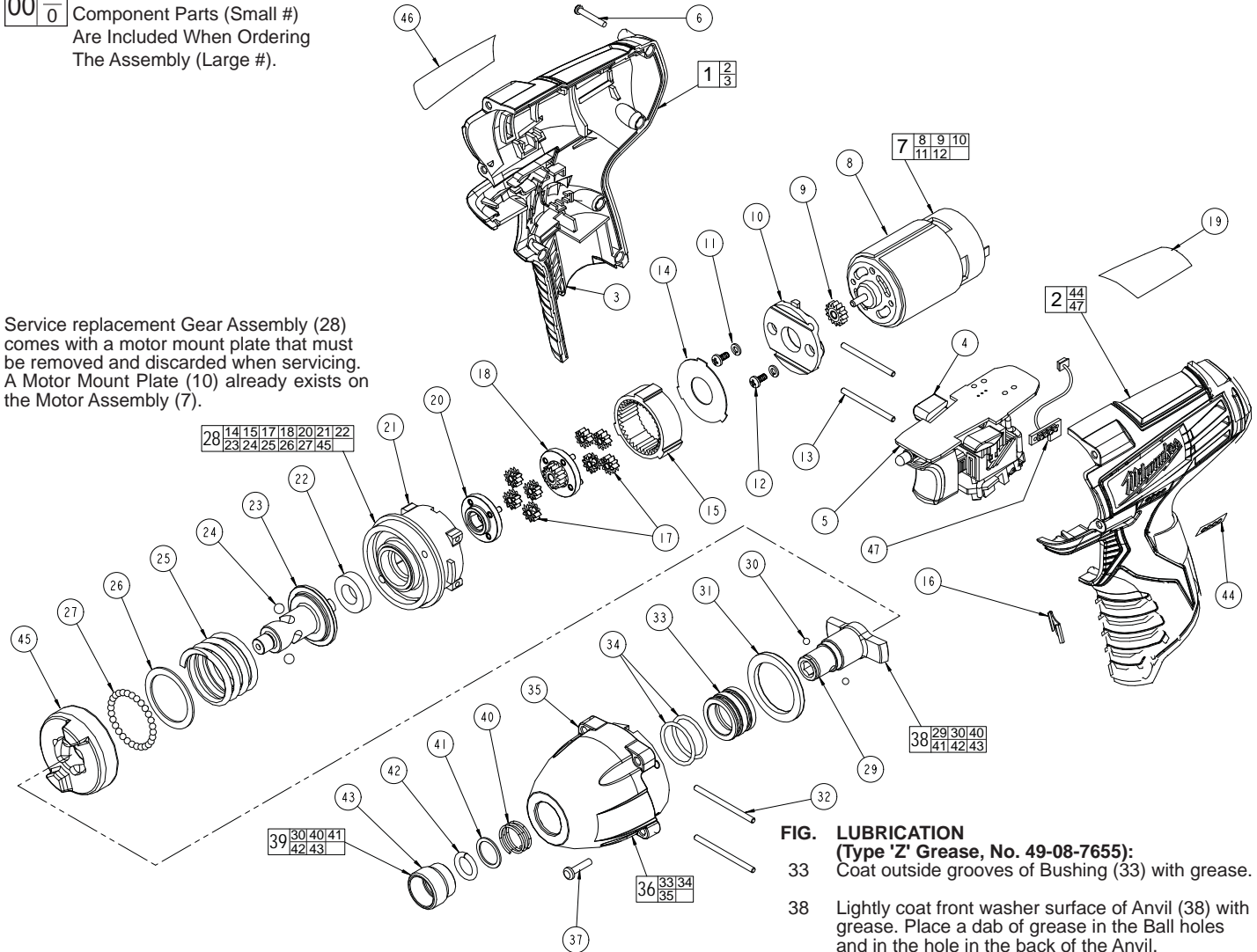
# SERVICE PARTS LIST

BULLETIN NO.  
54-26-2450

SPECIFY CATALOG NO. AND SERIAL NO. WHEN ORDERING PARTS		REVISED BULLETIN	DATE
12 Volt Impact Driver			Aug. 2008
CATALOG NO.	2450-20	STARTING SERIAL NO.	B59A
		WIRING INSTRUCTION SEE REVERSE SIDE	

**EXAMPLE:**  
00 0 Component Parts (Small #)  
Are Included When Ordering  
The Assembly (Large #).

Service replacement Gear Assembly (28) comes with a motor mount plate that must be removed and discarded when servicing. A Motor Mount Plate (10) already exists on the Motor Assembly (7).



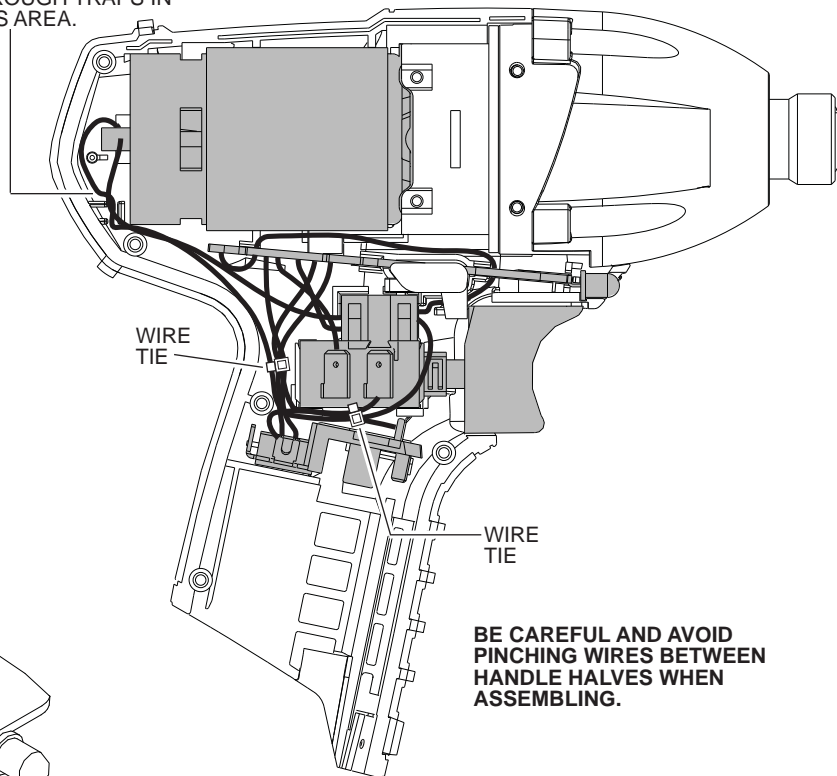
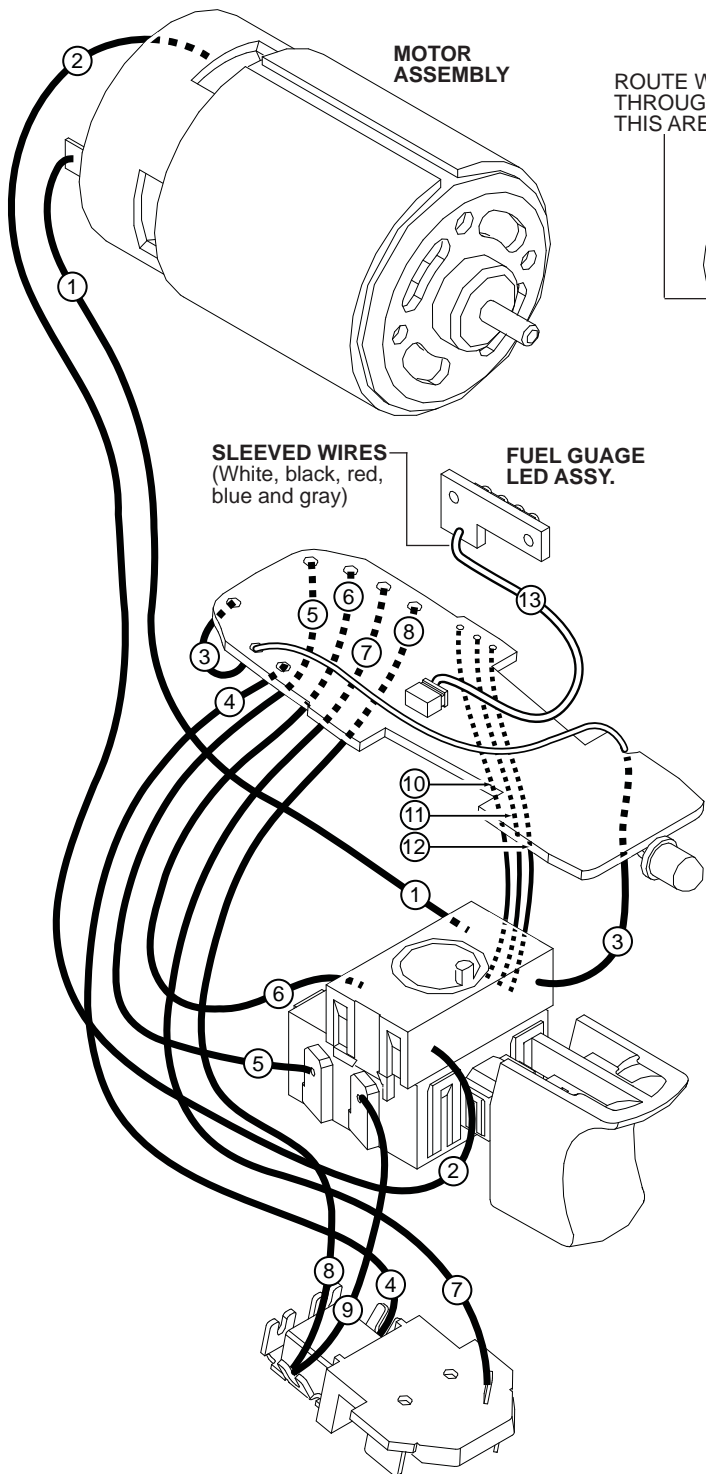
**FIG. LUBRICATION**  
**(Type 'Z' Grease, No. 49-08-7655):**  
33 Coat outside grooves of Bushing (33) with grease.  
38 Lightly coat front washer surface of Anvil (38) with grease. Place a dab of grease in the Ball holes and in the hole in the back of the Anvil.

FIG.	PART NO.	DESCRIPTION OF PART	NO. REQ.
1	31-50-2402	Handle Set	(1)
2	-----	Left Handle Half	(1)
3	-----	Right Handle Half	(1)
4	45-24-0105	Fwd./Rev. Button	(1)
5	23-66-1105	Electronics Module Assembly	(1)
6	06-82-2385	M2.6 x 14 T-9 Screw	(5)
7	23-30-0090	Motor Service Assembly	(1)
8	-----	Motor	(1)
9	-----	Pinion	(1)
10	-----	Motor Mount	(1)
11	-----	Washer	(2)
12	-----	M3 x 6 Screw	(2)
13	06-65-0075	Pin	(2)
14	-----	Washer	(1)
15	-----	Ring Gear	(1)
16	42-70-0055	Clip	(1)
17	-----	Planet Gear Set	(8)
18	-----	Sun Gear	(1)
19	10-20-0790	Warning Label	(1)
20	-----	Carriage	(1)
21	-----	Rear Housing	(1)
22	-----	Ball Bearing	(1)
23	-----	Cam Shaft	(1)
24	-----	3/16" Dia. Steel Ball	(2)
25	-----	Compression Spring	(1)
26	-----	Washer	(1)

FIG.	PART NO.	DESCRIPTION OF PART	NO. REQ.
27	-----	3.0mm Dia. Steel Ball	(29)
28	14-29-0190	Gear Assembly	(1)
29	-----	Anvil	(1)
30	-----	3.5mm Steel Ball	(2)
31	45-88-0455	Washer	(1)
32	06-65-0085	Pin	(2)
33	-----	Sleeve Bearing	(1)
34	-----	O-Ring	(2)
35	-----	Gear Housing	(1)
36	14-30-0005	Gearcase Assembly	(1)
37	06-81-0005	M3.5 x 24 Screw	(4)
38	45-22-0015	Sleeve and Anvil Assembly	(1)
39	45-22-0010	Sleeve and Ball Assembly	(1)
40	-----	Spring	(1)
41	-----	Washer	(1)
42	-----	Retaining Ring	(1)
43	-----	Sleeve	(1)
44	-----	LED Label	(1)
45	-----	Hammer	(1)
46	12-20-2450	Service Nameplate	(1)
47	-----	Fuel Gauge LED Assembly	(1)
	42-55-2450	Carrying Case (Not Shown)	(1)

AS AN AID TO REASSEMBLY, TAKE NOTICE OF WIRE ROUTING AND POSITION IN WIRE GUIDES AND TRAPS WHILE DISMANTLING TOOL

ROUTE WIRES 1 AND 2 THROUGH TRAPS IN THIS AREA.



BE CAREFUL AND AVOID PINCHING WIRES BETWEEN HANDLE HALVES WHEN ASSEMBLING.

### WIRING SPECIFICATIONS

Wire No.	Wire Color	Origin or Gauge	Length	Terminals, Connectors and 1 or 2 End Wire Preparation
1	Black	23-30-0090	-----	Component of the motor assembly.
2	Red	23-30-0090	-----	Component of the motor assembly.
3	White	23-66-1105	-----	Component of the electronics module assembly.
4	Black	23-66-1105	-----	Component of the electronics module assembly.
5	Black	23-66-1105	-----	Component of the electronics module assembly.
6	Red	23-66-1105	-----	Component of the electronics module assembly.
7	White	23-66-1105	-----	Component of the electronics module assembly.
8	Red	23-66-1105	-----	Component of the electronics module assembly.
9	Red	23-66-1105	-----	Component of the electronics module assembly.
10	Yellow	23-66-1105	-----	Component of the electronics module assembly.
11	Blue	23-66-1105	-----	Component of the electronics module assembly.
12	Black	23-66-1105	-----	Component of the electronics module assembly.
13	Sleeve	23-66-1105	-----	Component of the electronics module assy. / Fuel gauge LED.