



ENGINEERING EXCELLENCE

Caesar Collection #4CS610

PARTS BREAKDOWN SHEET

DESCRIPTION

- Two Handle Roman Tub Set
- Metal Lever Handles
- Rigid Spout
- 10" Reach
- Ceramic Disc Cartridges
- 3-Hole 8" to 16" Installation

FINISHES

- PC PVD Polished Chrome
- BN PVD Brushed Nickel
- SS PVD Stainless Steel
- PN PVD Polished Nickel



STANDARDS APPLICABLE

- ASME A112.18.1
- ANSI A117.1
- CUPC / IAPMO LISTED / ADA COMPLIANT

Note:-

Rough-in valve included.

#4CS610 SHOWN * ADA



Model #: _____

Specific Features: _____

Project Name: _____

Submitted For: _____

Model	Description	Finishes	
#4CS610	Two Handle Roman Tub Set	<input type="checkbox"/> PC	<input type="checkbox"/> Other__



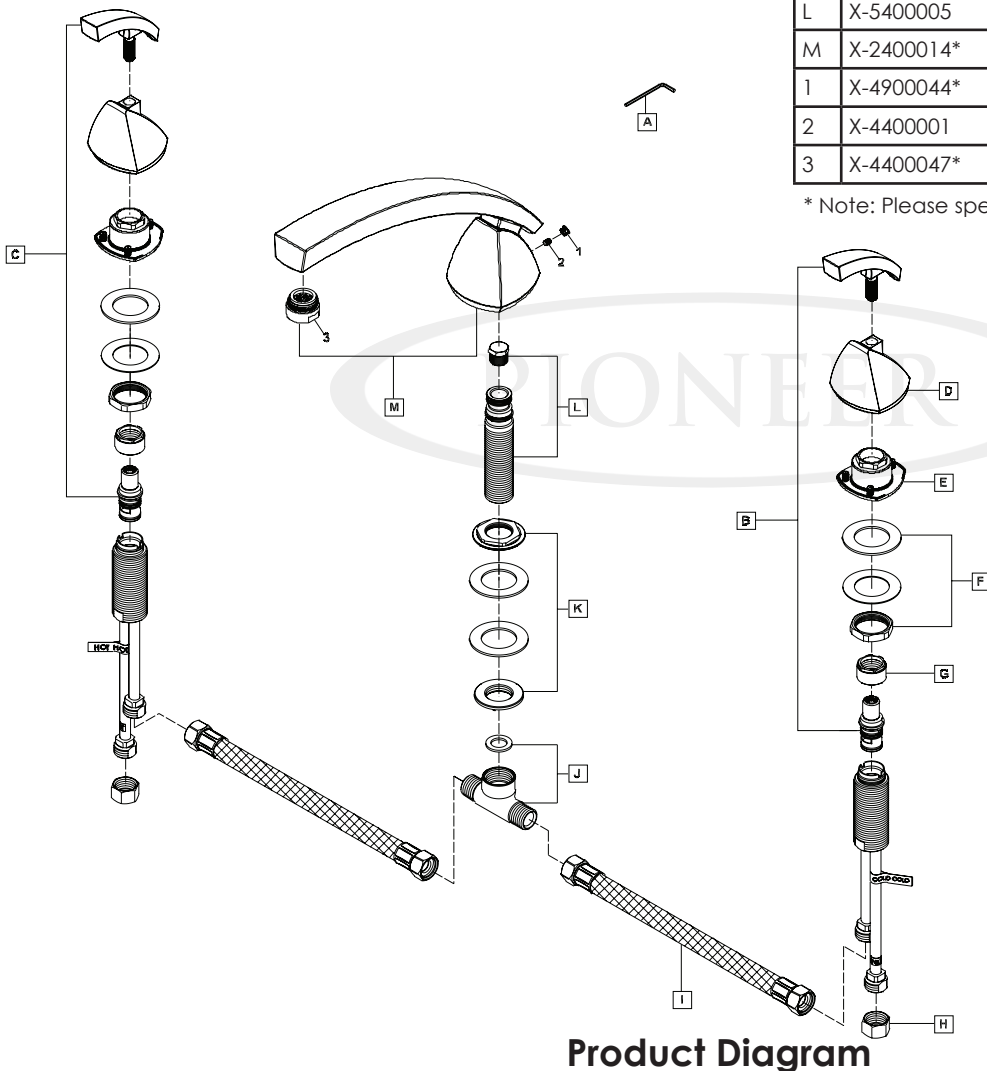
ENGINEERING EXCELLENCE

Pioneer:1-800-338-9468
 Commerce, CA 90040
 www.pioneerind.com
 Pioneer Industries, Inc. © 2013

DMPB4CS610/REV. 12 2012
 Page 1 of 2

	ITEM#	DESCRIPTION
A	X-4900026	Allen Wrench
B	X-1900017C*	Caesar Handle And Cartridge Kit-Cold
C	X-1900017H*	Caesar Handle And Cartridge Kit-Hot
D	X-1400024*	Caesar Handle Hub
E	X-4400074	Caesar Handle Locknut
F	X-5400003	Valve Mounting Kit
G	X-4900022	Bonnet Nut
H	X-4900004	Supply Nut
I	X-4400063	Hose Connector
J	X-4400029	T-Connector
K	X-5400001	Spout Mounting Kit
L	X-5400005	Shank and Test Plug
M	X-2400014*	Caesar Spout
1	X-4900044*	Hole Cover
2	X-4400001	Allen Screw
3	X-4400047*	Flow Streamer

* Note: Please specify finish/color when ordering.



ENGINEERING EXCELLENCE

Pioneer: 1-800-338-9468
 Commerce, CA 90040
 www.pioneerind.com
 Pioneer Industries, Inc. © 2013