



ENGINEERING EXCELLENCE

Installation Guide

Two Handle Roman Tub Set:

- 4CS610

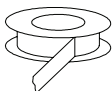
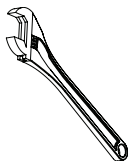
This product meets the following standards:

- ASME A112.18.1
- ANSI A117.1
- CUPC/ IAPMO LISTED/ ADA COMPLIANT



Thank you for purchasing this Pioneer quality product.

Tools Required



Adjustable
Wrench

Teflon Tape

Rags

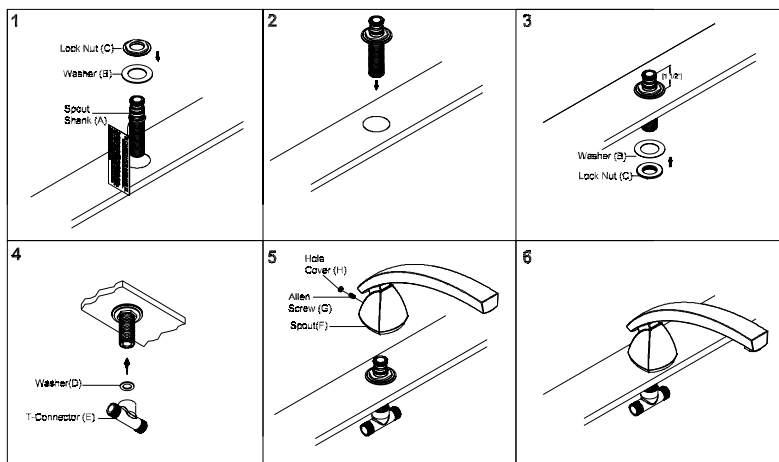
Prior to Installation

- Observe all local plumbing and building codes before you begin installation.
- Carefully shut off both hot and cold water supplies.
- Plug the tub drain with a soft cloth to prevent intrusion of debris or the loss of any parts.
- Pioneer reserves the right to make changes in the design of faucets without notice.

Valve Installation

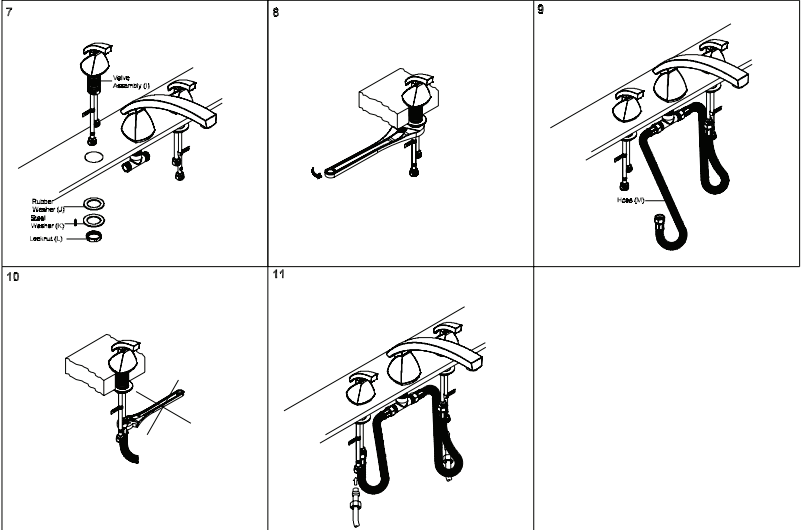
- Note:- This product is for finished deck-mount or finished rim-mount installations only.
1. Thread the locknut(C) and rubber washer(B) from bottom of the shank(A).
 2. Slide the shank(A) from top of the spout mounting hole.
 3. Slide the rubber washer(B) from underneath of the shank. Thread the locknut(C) from underneath of the shank. Adjust the shank height to 1-1/2" from finished deck or finished rim and tighten both locknuts(C).
 4. Install the 'T' connector(E) to beneath of the shank(A). Do not forget to place the washer(D) between the 'T' connector(E) and the shank(A). Tighten the 'T' connector.
 5. Apply adequate amount of plumbers putty or sealant underneath of the spout(F).
 6. Install the spout(F) on the shank(A) and secure it with the help of allen screw(G). Place the hole cover(H). Clean the mounting surface if necessary.

Valve Installation



Trim Installation

- Place the cold side valve assembly(I) on right hand side and hot side valve assembly on the left hand side of the spout(F). Apply adequate amount of plumbers putty or sealant underneath of the valve assembly(I) for watertight seal.
- Slide the rubber washer(J), steel washer(K) & locknut(L) from underneath of the valve. Tighten the locknut(L) with the help of 1-11/32" size socket or adjustable wrench. Ensure the handle is aligned properly. Install the hot side valve(I) in the same way.
- Carefully hand tighten the hose(M) to the valve outlets. The other end connect it to T-connector(E).
- Do not overtighten the hose with adjustable wrench as it may damage the valve assembly(I).
- Connect the valve assembly(I) inlets to water supply tubes (left is hot water supply and right is cold water supply). Do not overtighten the hoses with adjustable wrench as it may damage the valve assembly(I). Turn on water supplies. Check for any leaks.



For more care information or trouble shooting inquiries about your Pioneer Product, please see the contact information on the back page.



ENGINEERING EXCELLENCE

3325 S. Garfield Ave. | Commerce, CA 90040
Telephone: (800) 338-9468 | (323) 888-8873 | Fax: (323) 888-9515
Hours: M - F, 7:30am to 5:00pm PST
www.pioneerind.com