

SYMMONS® Vella™

Kitchen Faucet S-2610

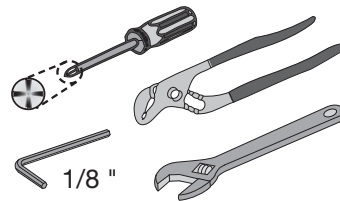
Installation and Service Instructions



Model Numbers

- S-2610..... Chrome finish
- S-2610-STN Satin Nickel finish
- S-2610-STS..... Stainless Steel finish

Tools & Materials



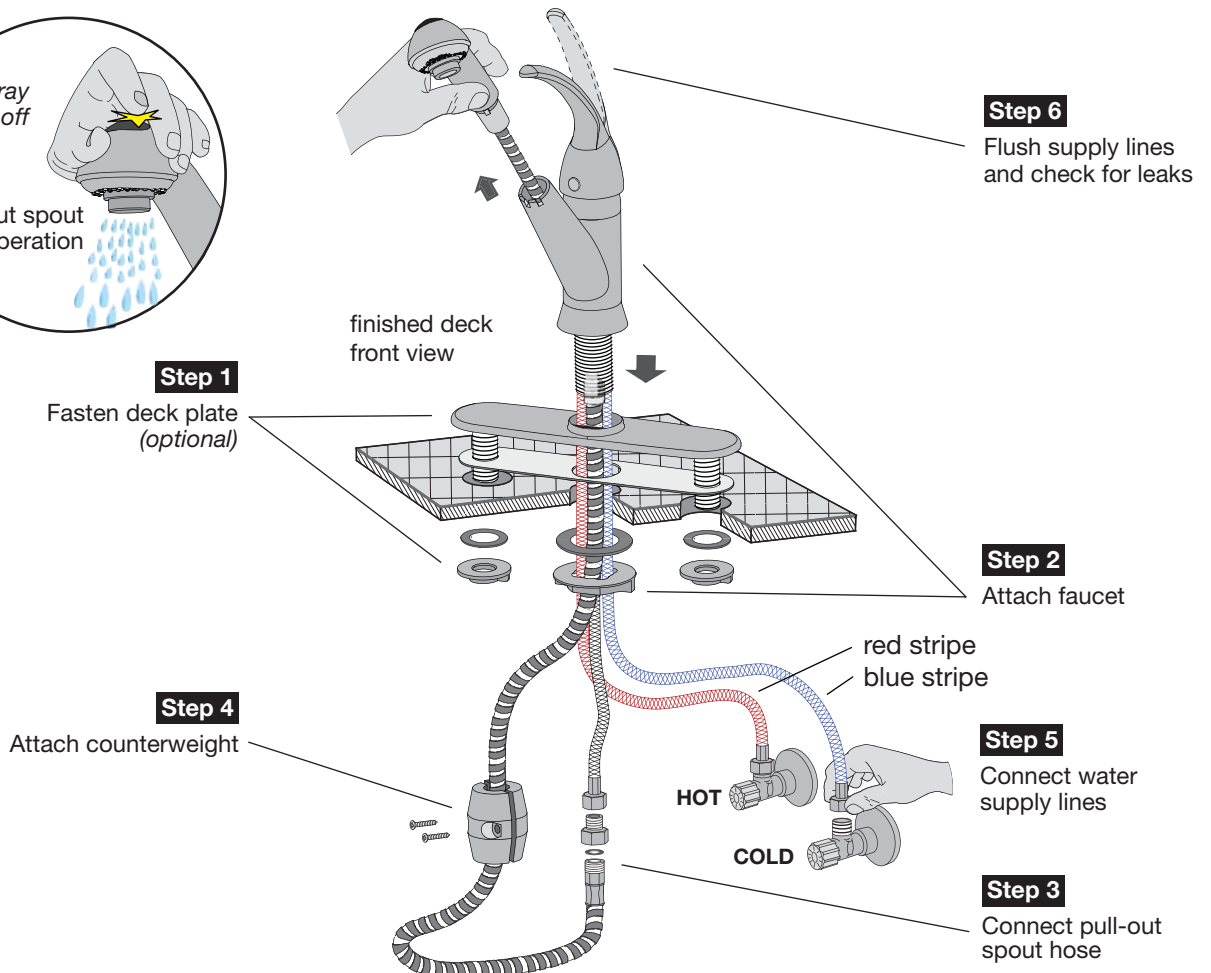
☎ Need Help?

Symmons customer service:
 (800) 796-6667, (781) 848-2250
 Email: customerservice@symmons.com
 Monday - Friday 8:00 am - 7:30 pm EST

🌐 www.symmons.com/service

- Technical help
- Product information
- Warranty policy

Quick Install Guide *Vella Kitchen Faucet, S-2610*

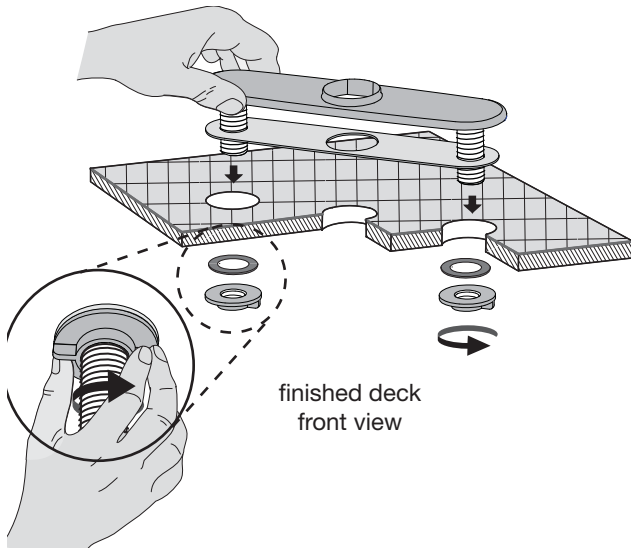


Installation Instructions

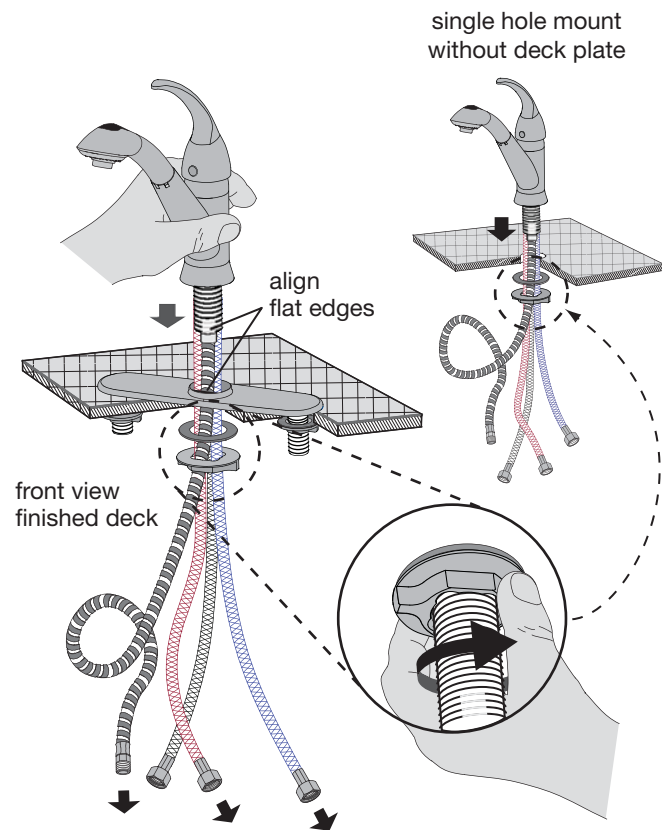
Caution: If replacing an older faucet ensure water supply is turned OFF before removing and then turn faucet handles ON to relieve water pressure.

Step 1 Attach deck plate (optional)

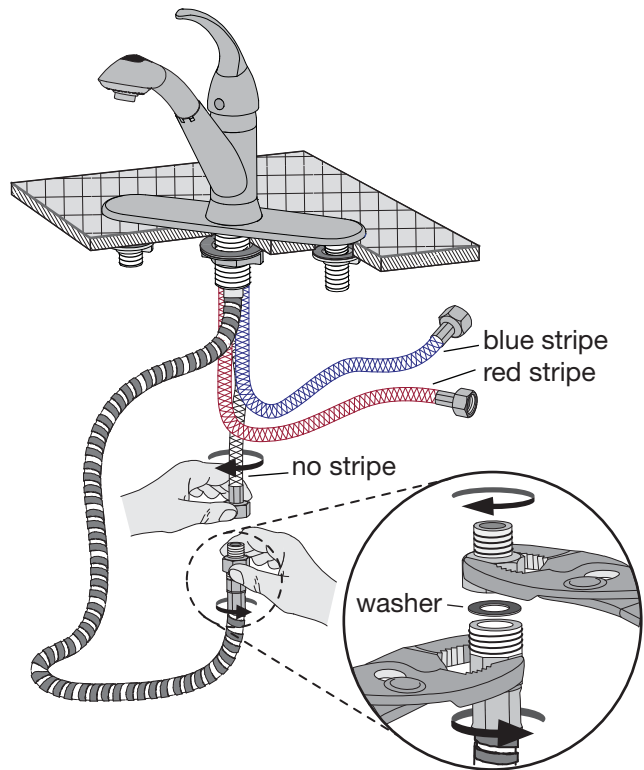
Installing deck plate is optional and typically used when replacing faucet to cover existing holes.



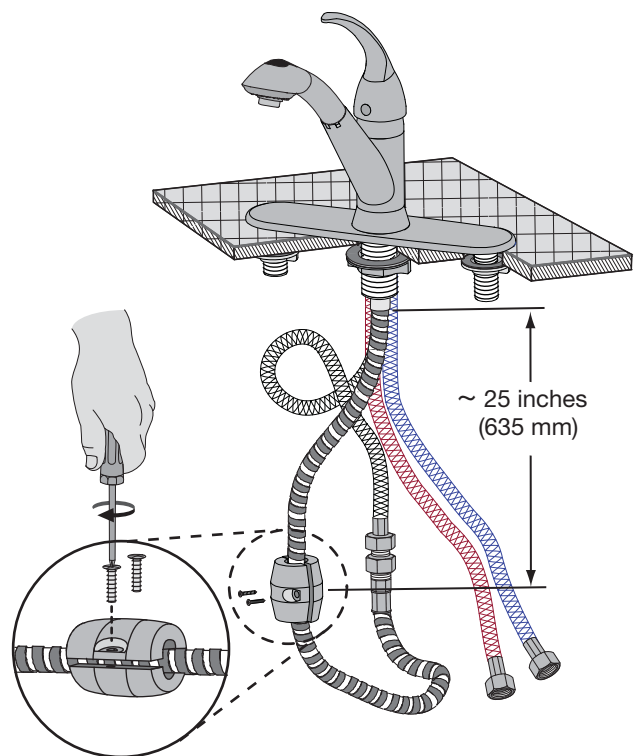
Step 2 Attach faucet assembly to deck



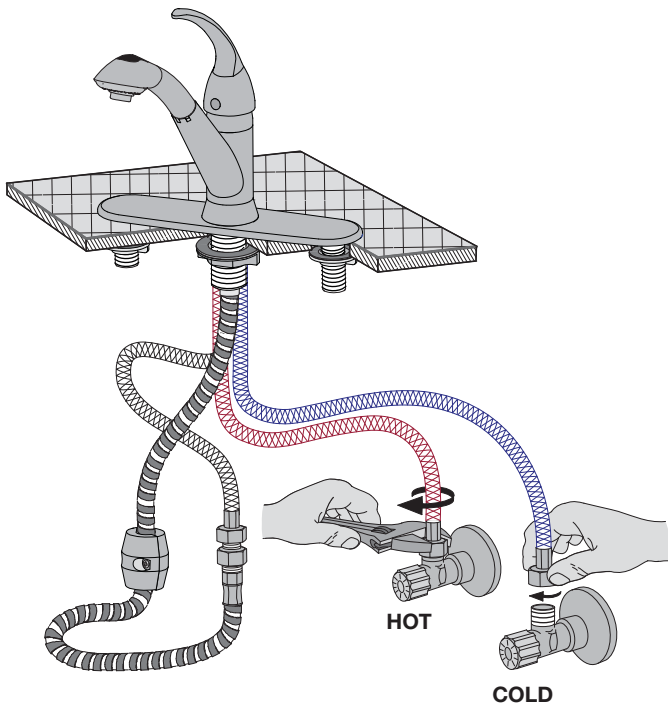
Step 3 Connect pull-out spout hose



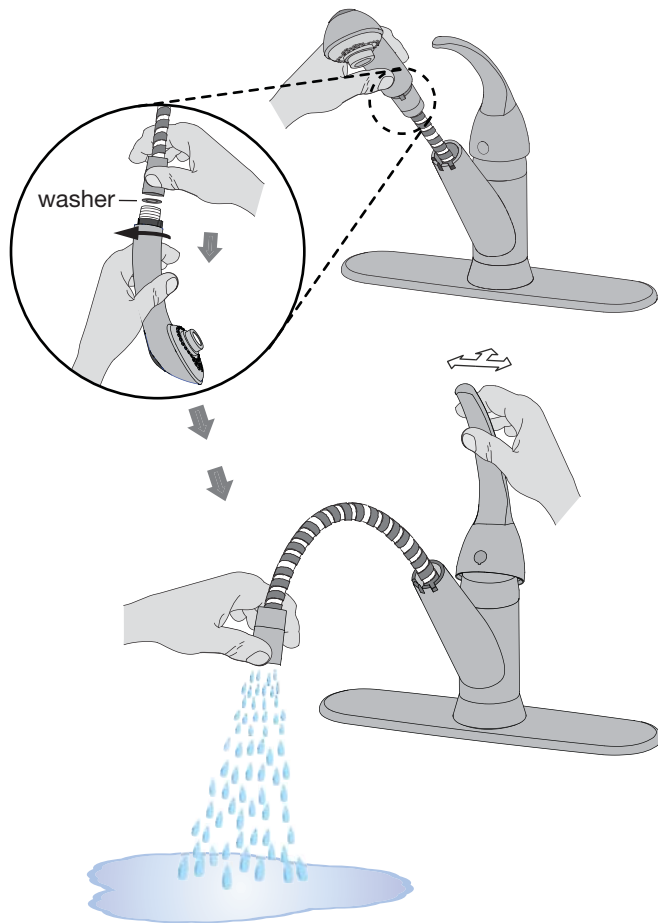
Step 4 Attach counterweight to hose



Step 5 Connect supply lines



Step 6 Flush supply lines and check for leaks

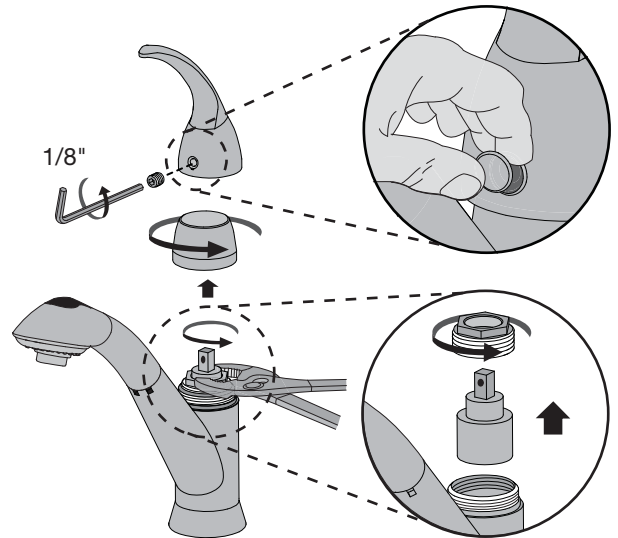


Care of faucet finish

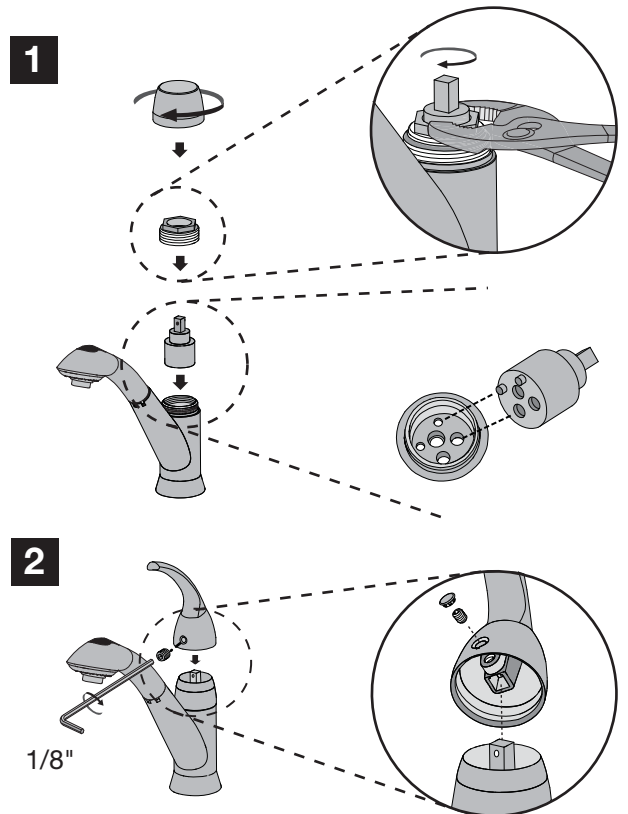
Clean finish area by using mild soap and water or non-abrasive cleaner and then rinse immediately. A non-abrasive wax may be used to preserve finish area.

Valve cartridge replacement

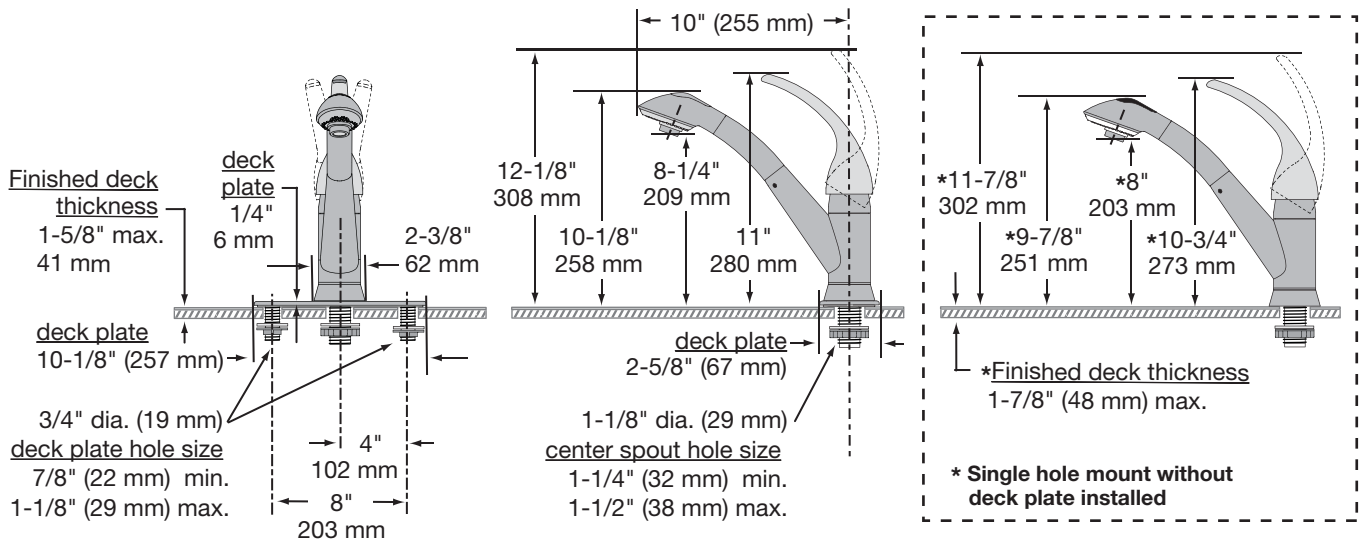
Removing handle and cartridge



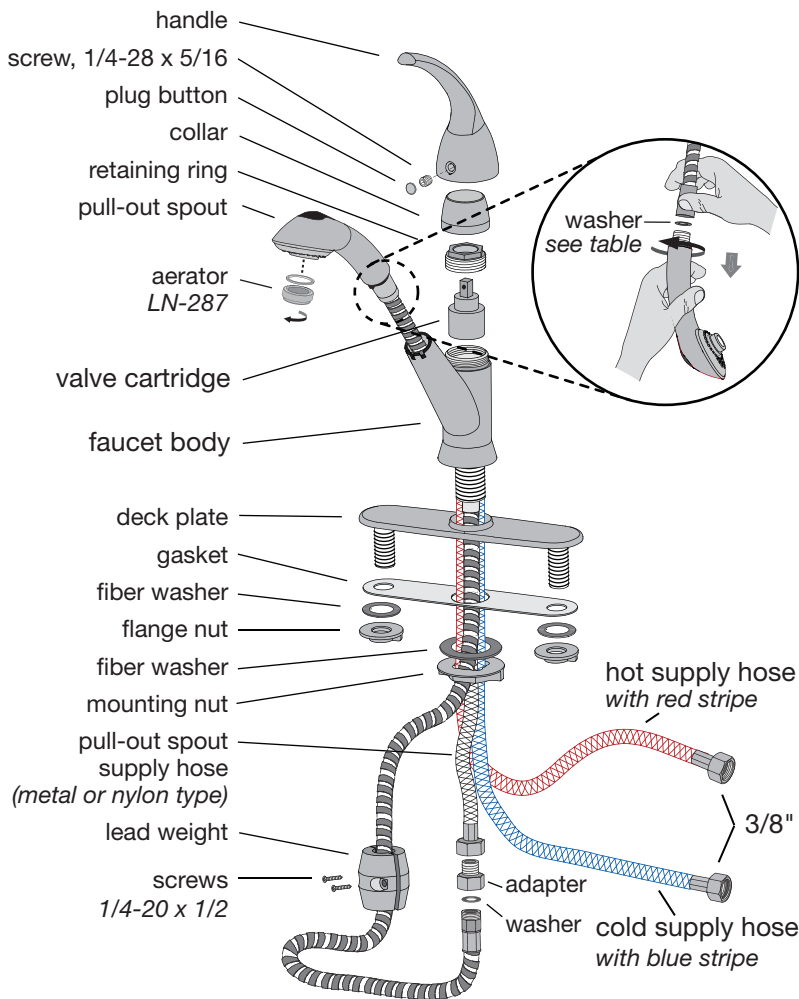
Replacing cartridge and handle



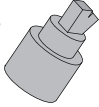



Dimensions *Vella Kitchen Faucet, S-2610*



Parts Assembly *Vella Kitchen Faucet, S-2610*



Replacement Parts

Part Number	Item
KN-4	valve cartridge 
LN-287	aerator 
SC-12W	Pull-out spout hose washer Washer for flexible metal type hose 
KN-236A	Washer for nylon type hose 

Ordering replacement parts:

Symmons customer service: (800) 796-6667, (781) 848-2250 M-F 8:00 am - 7:30 pm EST
Symmons distributors: www.symmons.com

Note: For decorative finish faucets add appropriate letter suffix code to part numbers marked with an asterisk ().