

FOODSERVICE DISPOSER CONTROL CENTER LIMITED WARRANTY

InSinkErator Foodservice Disposer Control Centers are warranted against defects in material and workmanship for one year from the date of installation. The warranty includes parts and labor, provided the service is performed by an InSinkErator Factory Authorized Service Center. This warranty does not apply if failure is due to: *faulty or improper electrical installation, faulty or improper plumbing installation, product abuse or misuse, or accidental damage.*

Foodservice disposer accessories are included in this warranty only if they are included in the original disposer purchase package.

STOP Please read Troubleshooting Guide and/or visit www.insinkerator.com before calling 1-800-845-8345

TROUBLESHOOTING

| PROBLEM: | POSSIBLE CAUSE: | WHAT TO DO: |
|--|--|---|
| Disposer motor will not start and water does not flow. | No incoming line power | Turn line power on |
| | Electric disconnect switch is not ON. | Turn electric disconnect to ON position. |
| | Electrical disconnect switch has been reactivated and 30-second delay has not yet expired. | Wait 30 seconds and try starting again. |
| | Control circuit fuse FNA2 is blown. | Replace fuse. |
| Disposer motor stops while grinding but water continues to flow. | Control center wired for automatic shut-off. | Press start button. If disposer runs for 10 minutes then shuts off, the automatic shutoff is active. If the manual setting is desired, change as indicated in the feature section. |
| | Disposer is jammed. | Press stop button and follow directions for unjamming that were supplied with the disposer. |
| | Disposer motor overload protector has tripped. | Press stop button. Locate red reset button on front of disposer electrical cover. Press to reset. If motor had been running, wait five minutes for the motor and overload to cool down before starting. |
| Disposer will not start but water flows. | Overload protector on the disposer may have tripped. | Press stop button. Locate red reset button on front of disposer electrical cover. Press to reset. If motor had been running, wait five minutes for the motor and overload to cool down before starting. |
| | Disposer is jammed. | Press stop button and follow directions for unjamming that were supplied with the disposer. |
| Water flows constantly before start button is pushed. | Water solenoid valve is installed backward. | Water flow should be in the direction of the arrow on valve. |
| Water flow does not decrease to 1 GPM. | Incorrect solenoid valve combination connections. | Refer to the Installation Manual |
| | Incorrect trip point adjustment. | Refer to the Installation Manual |
| Water flow does not increase. | Incorrect trip point. | Refer to the Installation Manual |
| | Solenoid valve wiring incorrect in panel. | Refer to the Installation Manual |
| Overload trips frequently. | Disposer overloaded with excess amounts of garbage and water | See disposer instructions for recommended water flows |

www.insinkerator.com/foodservice • 1-800-845-8345

14727 Rev C



What You Should Know Before Beginning

This is a quick reference guide. Please refer to the complete Installation, Care & Use Manual for specifics including warnings, cautions and dangers. If after reading the troubleshooting section, you still have questions about parts, installation or warranty, please visit www.insinkerator.com/foodservice or call 1-800-845-8345.

Please have the model and serial number of your AS101 Control Panel and Disposer when calling. Visit www.insinkerator.com/foodservice for assistance on many common questions.



www.insinkerator.com/foodservice
1-800-845-8345

9 Step Quick Install Guide

AquaSaver® and Disposer



1 2 3 4 5 6 7 8 9

Verify that all components are the same voltage and phase as your main power supply

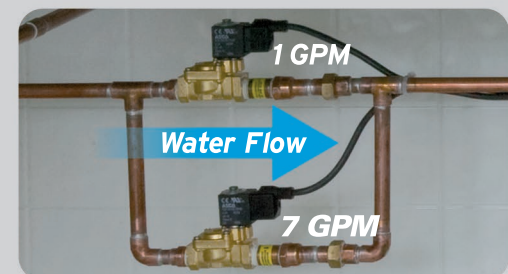
1 2 3 4 5 6 7 8 9

Install disposer per Installation Manual



1 2 3 4 5 6 7 8 9

- A. Install solenoid valves using cold water supply
- B. Complete plumbing to sink or trough per local codes



9 Quick & Easy Steps to AquaSaver® Installation

See Installation, Care & Use Manual for important cautions, warnings and dangers

1 2 3 4 5 6 7 8 9

Connect drain to disposer per local codes

⚠ WARNING

ELECTRICAL SHOCK

Turn off the electrical supply to the disposer before attempting any work on it. Use a voltmeter or circuit tester to ensure that power is off.

Installation must conform to local electrical codes.

All control centers and disposers must be carefully and permanently grounded.

A properly fused disconnect must be installed at the electrical supply source for the control center.

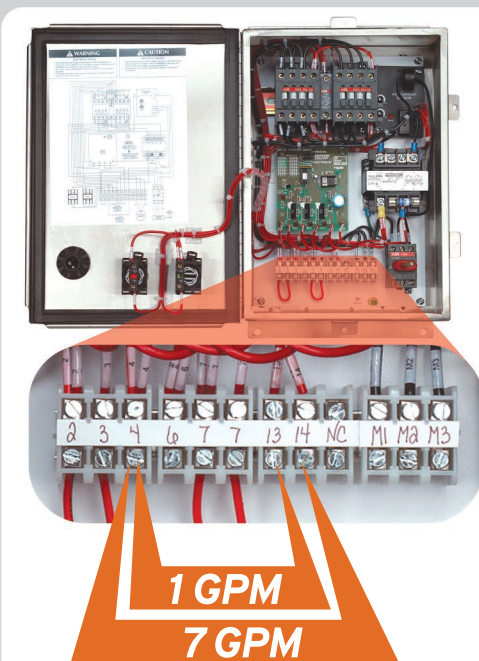
1 2 3 4 5 6 7 8 9

Install AS-101 Control Center per Installation Manual



1 2 3 4 5 6 7 8 9

Make solenoid connections inside AS-101 Control Center per Installation Manual



NOTICE

PROPERTY DAMAGE

Ensure that the control center voltage and phase match the disposer motor and electrical supply.

Check nameplates on disposers and control centers for voltage and phase specification. The disposer motor wiring connection is shown in the disposer terminal box.

1 2 3 4 5 6 7 8 9

Connect the disposer and AS-101 Control Center together per Installation Manual



1 2 3 4 5 6 7 8 9

Connect main Power Supply to AS-101 Control Center per Installation Manual and local codes

1 2 3 4 5 6 7 8 9

See Installation Manual to set current sensor

