

PA-480C

PA-480BN

PA-480ORB

6" - 12" Two Handle Widespread Lavatory Faucet

Product Spec Sheet



FEATURES & BENEFITS

- This Product Contains Less Than 0.25% Weighted Average Lead Content On Wetted Surfaces
- Metal Lever Handles
- Ceramic Cartridges
- Brass Pop-up
- Max Flow Rate 1.5 GPM(5.7 LPM) at 60 PSI (ASME.A112.18.1)

PA-480C
Chrome Finish

PA-480BN
Brushed Nickel Finish

PA-480ORB
Oil Rubbed Bronze Finish

APPROVALS:

Meets or Exceeds The Following:

- * ANSI/ASME A112.18.1
- * ANSI/NSF 61 – Sec. 9
- * IAPMO/UPC
- * CA AB1953



CALIFORNIA:
TEXAS:
NEW YORK:

TEL: 866-532-8306
TEL: 800-935-5456
TEL: 800-431-2082

FAX: 866-532-8307
FAX: 800-683-4247
FAX: 800-640-2252

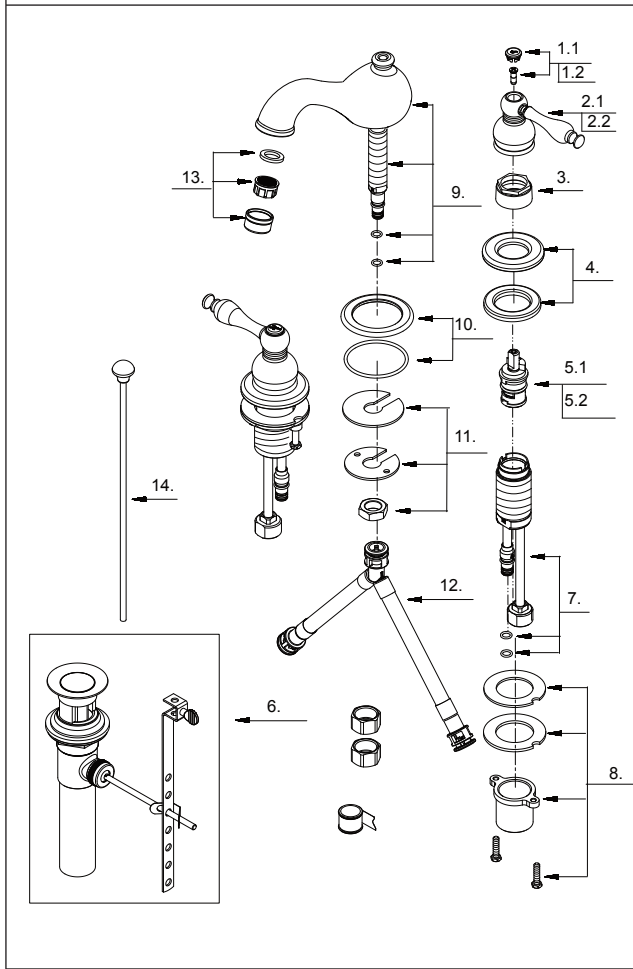
PA-480C
 PA-480ORB

PA-480BN

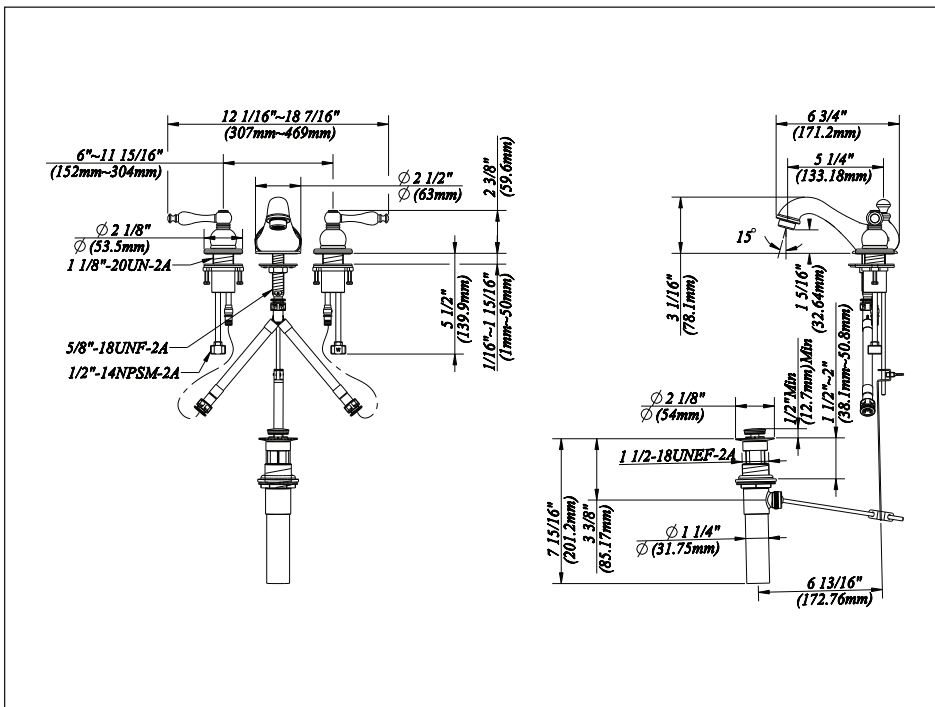


6" - 12" Two Handle Widespread Lavatory Faucet

No.	Name	Material
1.1	Index Button-Cold	Brass & Stainless Steel
1.2	Index Button-Hot	Brass & Stainless Steel
2.1	Metal Handle Assembly-Cold	Zinc Alloy
2.2	Metal Handle Assembly-Hot	Zinc Alloy
3	Retainer Nut	Brass
4	Handle Trim Ring	Brass
5.1	Ceramic Disc Cartridge-Cold	Ceramic & Brass
5.2	Ceramic Disc Cartridge-Hot	Ceramic & Brass
6	Pop-up Assembly	Brass
7	Handle Valve Body	Brass
8	Mounting Hardware	Stainless Steel
9	Spout Assembly	Brass
10	Spout Trim Ring	Brass
11	Mounting Hardware	Brass & Plastic
12	"Y" Adaptor	Brass
13	Aerator	Stainless Steel
14	Lift Rod	Brass



Product Spec Sheet



APPROVALS:
Meets or Exceeds The Following:

- * ANSI/ASME A112.18.1
- * ANSI/NSF 61 – Sec. 9
- * IAPMO/UPC
- * CA AB1953

CALIFORNIA: TEL: 866-532-8306 FAX: 866-532-8307
TEXAS: TEL: 800-935-5456 FAX: 800-683-4247
NEW YORK: TEL: 800-431-2082 FAX: 800-640-2252

Visit Our Web Site : www.matco-norca.com