

**BL-480C**    **BL-480BN**  
 **BL-480ORB**



## 6" - 12" Two Handle Widespread Lavatory Faucet

# Product Spec Sheet



### FEATURES & BENEFITS

- This Product Contains Less Than 0.25% Weighted Average Lead Content On Wetted Surfaces
- Metal Lever Handle
- Ceramic Cartridges
- Brass Pop-up
- Max Flow Rate 1.5 GPM(5.7 LPM) at 60 PSI (ASME.A112.18.1)

BL-480C  
Chrome Finish

BL-480BN  
Brushed Nickel Finish

BL-480ORB  
Oil Rubbed Bronze Finish

### APPROVALS:

Meets or Exceeds The Following:

- \* ANSI/ASME A112.18.1
- \* ANSI/NSF 61 – Sec. 9
- \* IAPMO/UPC
- \* CA AB1953



**CALIFORNIA:**  
**TEXAS:**  
**NEW YORK:**

**TEL: 866-532-8306**  
**TEL: 800-935-5456**  
**TEL: 800-431-2082**

**FAX: 866-532-8307**  
**FAX: 800-683-4247**  
**FAX: 800-640-2252**

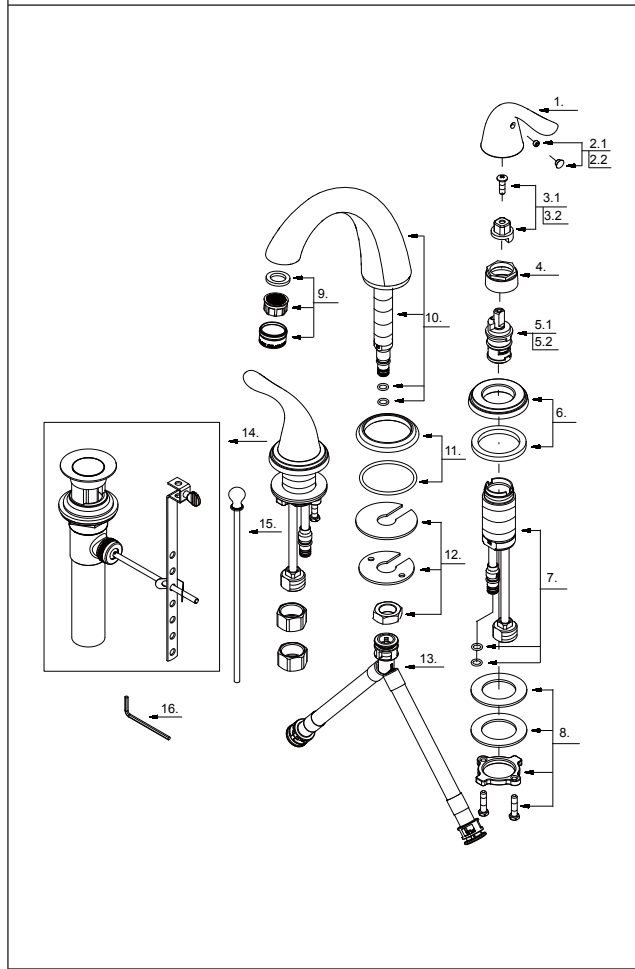
Visit Our Web Site : [www.matco-norca.com](http://www.matco-norca.com)

**BL-480C**     **BL-480BN**  
 **BL-480ORB**

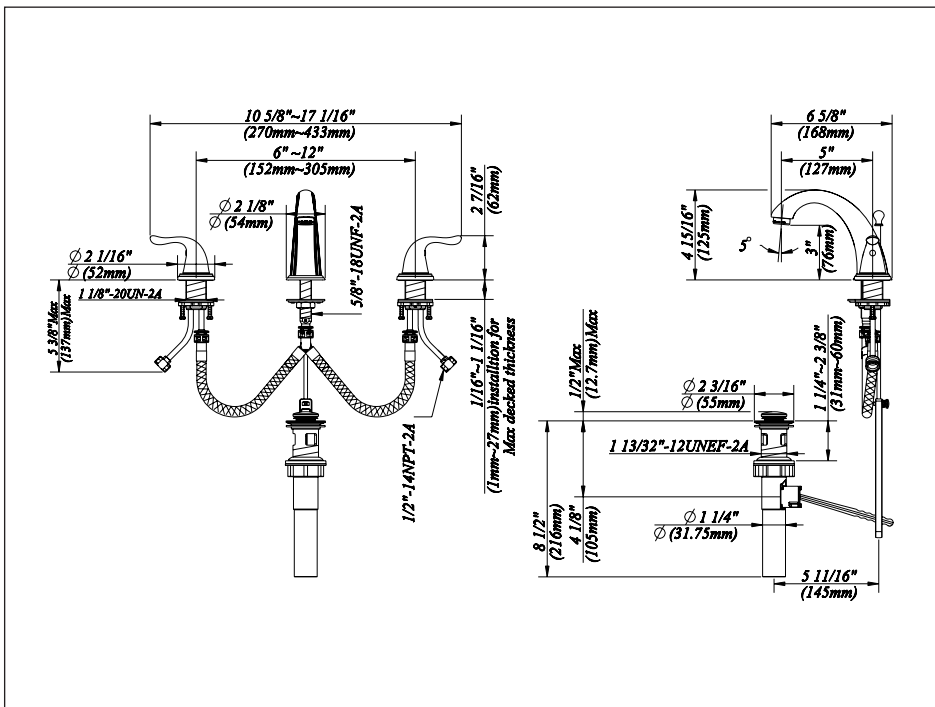


# 6" - 12" Two Handle Widespread Lavatory Faucet

No.	Name	Material
1	Metal Handle	Zinc Alloy
2.1	Index Button-Cold	Plastic
2.2	Index Button-Hot	Plastic
3.1	Handle Adaptor-Cold	Plastic
3.2	Handle Adaptor-Hot	Plastic
4	Retainer Nut	Zinc Alloy
5.1	Ceramic Disc Cartridge-Cold	Ceramic & Plastic
5.2	Ceramic Disc Cartridge-Hot	Ceramic & Plastic
6	Handle Trim Ring	Brass
7	Handle Valve Body	Brass
8	Mounting Hardware Assembly	Stainless Steel
9	Aerator	Plastic & Brass
10	Spout Assembly	Brass
11	Spout Trim Ring	Brass
12	Mounting Hardware	Stainless Steel
13	Supply Hose	Plastic
14	Pop-up Assembly	Brass
15	Lift Rod	Brass
16	Hex Wrench (H2.5 * 19 mm L * 53 mm L)	Stainless Steel



# Product Spec Sheet



**APPROVALS:**  
**Meets or Exceeds The Following:**

- \* ANSI/ASME A112.18.1
- \* ANSI/NSF 61 – Sec. 9
- \* IAPMO/UPC
- \* CA AB1953

**CALIFORNIA:** TEL: 866-532-8306 FAX: 866-532-8307  
**TEXAS:** TEL: 800-935-5456 FAX: 800-683-4247  
**NEW YORK:** TEL: 800-431-2082 FAX: 800-640-2252

Visit Our Web Site : [www.matco-norca.com](http://www.matco-norca.com)