

PA-730C

PA-730BN

PA-730ORB



PA-720C

PA-720BN

PA-720ORB

PA-730CJP

PA-730BNJP

PA-730ORBJP

PA-720CJP

PA-720BNJP

PA-720ORBJP

Single Handle Tub & Shower Faucet

Product Spec Sheet



FEATURES & BENEFITS

- Metal Lever Handle
- Washerless Pressure Balancing Valve
- Slip Fit Diverter Spout
- Max Flow Rate 2.5 GPM(9.5 LPM) at 80 PSI (ASME.A112.18.1)

APPROVALS:

Meets or Exceeds The Following:

* ANSI/ASME A112.18.1

* IAPMO/UPC

PA-730C
Tub & Shower Faucet
Chrome Finish

PA-730CJP
Trim Kit For Tub & Shower Faucet
Chrome Finish

PA-730BN
Tub & Shower Faucet
Brushed Nickel Finish

PA-730BNJP
Trim Kit For Tub & Shower Faucet
Brushed Nickel Finish

PA-730ORB
Tub & Shower Faucet
Oil Rubbed Bronze Finish

PA-730ORBJP
Trim Kit For Tub & Shower Faucet
Oil Rubbed Bronze Finish

PA-720C
Shower Only Faucet
Chrome Finish

PA-720CJP
Trim Kit For Shower Only Faucet
Chrome Finish

PA-720BN
Shower Only Faucet
Brushed Nickel Finish

PA-720BNJP
Trim Kit For Shower Only Faucet
Brushed Nickel Finish

PA-720ORB
Shower Only Faucet
Oil Rubbed Bronze Finish

PA-720ORBJP
Trim Kit For Shower Only Faucet
Oil Rubbed Bronze Finish



CALIFORNIA:
TEXAS:
NEW YORK:

TEL: 866-532-8306
TEL: 800-935-5456
TEL: 800-431-2082

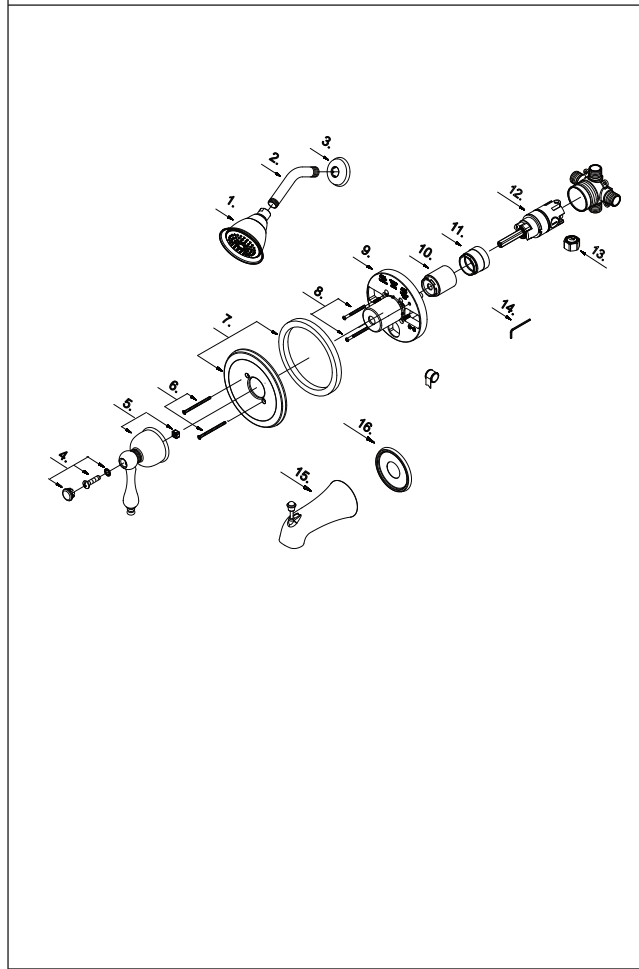
FAX: 866-532-8307
FAX: 800-683-4247
FAX: 800-640-2252

- PA-730C PA-730BN PA-730ORB
- PA-720C PA-720BN PA-720ORB
- PA-730CJP PA-730BNJP PA-730ORBJP
- PA-720CJP PA-720BNJP PA-720ORBJP

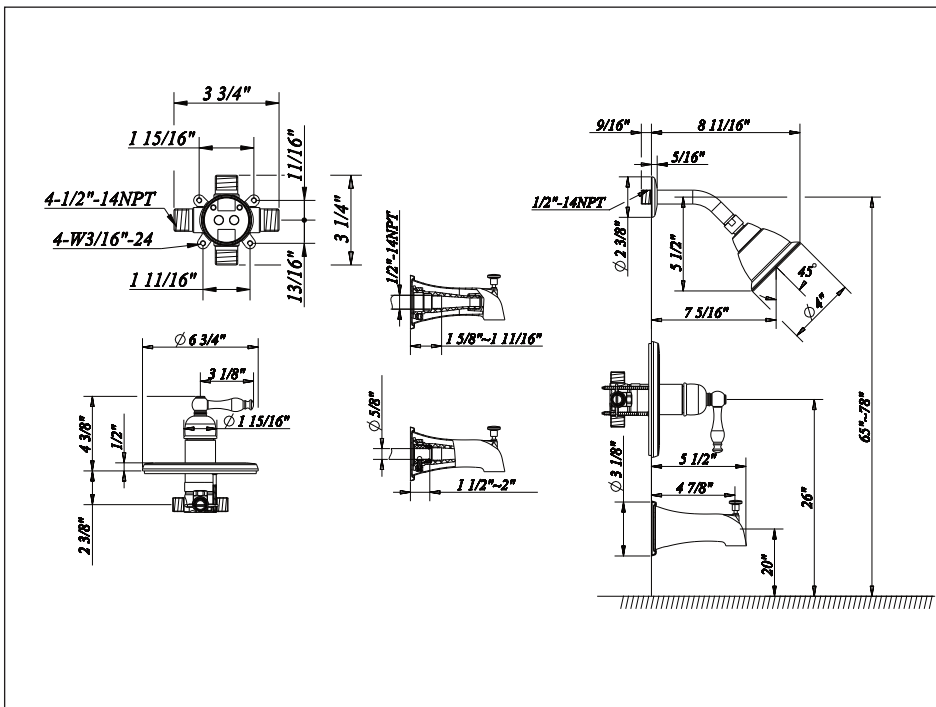


Single Handle Tub & Shower Faucet

No.	Name	Material
1	Shower Head	Plastic & Brass
2	Shower Arm	Brass
3	Shower Arm Flange	Brass
4	Handle Cap	Brass
5	Metal Handle Assembly	Zinc Alloy
6	Screw Set (3/16" -24 * 3" L)	Stainless Steel
7	Escutcheon Assembly	Stainless Steel
8	Screw Set (3/16" -24 * 2-3/16" L)	Stainless Steel
9	Plaster Guard	Plastic
10	Sleeve	Plastic
11	Retainer Nut	Brass
12	Washerless Cartridge Assembly	Plastic & Brass
13	Plug	Brass
14	Hex Wrench (H3.18 *20 mm L * 90 mm L)	Stainless Steel
15	Spout/w Diverter (Slip Fit)	Brass
16	Spout Escutcheon	Brass



Product Spec Sheet



APPROVALS:

Meets or Exceeds The Following:

* ANSI/ASME A112.18.1

* IAPMO/UPC

CALIFORNIA: TEL: 866-532-8306 FAX: 866-532-8307

TEXAS: TEL: 800-935-5456 FAX: 800-683-4247

NEW YORK: TEL: 800-431-2082 FAX: 800-640-2252

Visit Our Web Site : www.matco-norca.com