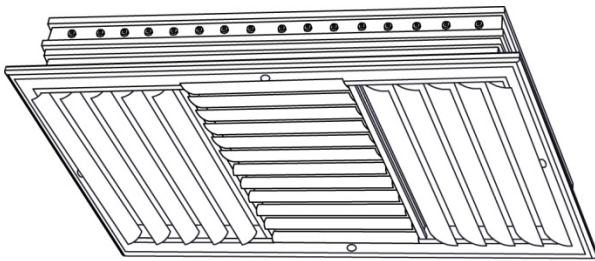




Commercial Submittal Sheet

CB Series

Adjustable Curved Blade Diffuser



Model: CB40
Description: Adjustable Aluminum Curved Blade Diffuser with Four-Way Air Pattern

Standard Features:

- Adjustable aluminum curved blades
- Nylon bushings on adjustable blades prevent metal on metal rattle
- Extruded aluminum surface mount frame with signature line marks
- Designed for four-way air deflection
- Countersunk mounting holes for flush appearance with color matching Philips posi-drive screws
- Rust resistant pre-coat with durable powder finish
- Soft White

Options:

- Recessed screwdriver operated Opposed Blade Damper (CB40-0)
- 2" ADC compliant round collar with bead for ease of installation
- MRI Compatible
- T-20 Tamper Proof Screws

Air Patterns:

- CB-40A
- CB-40B
- CB-40C

Finishes:

Standard Colors

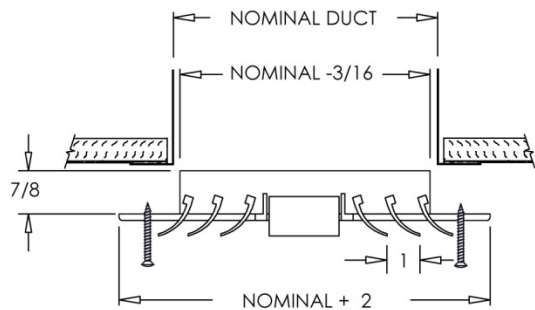
- Soft White
- Driftwood Tan

Designer Colors

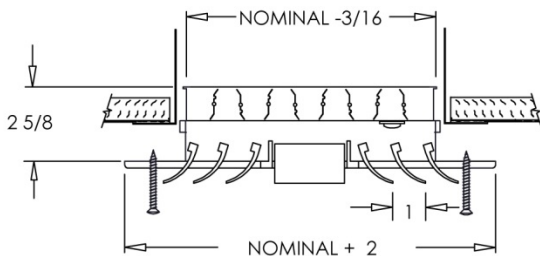
- Almond
- Black Velvet
- Bronze
- Camaro Silver
- Coffee Tan
- Navajo White
- Vanilla

Other

- Aluminum Paint
- Glossy White
- Mill Finish

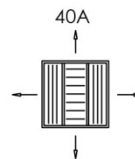


CB40

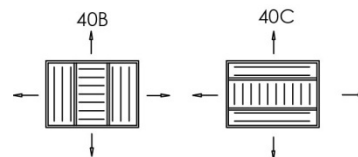


CB40-O

CB40 Square Air Patterns:



CB40 Rectangle Air Patterns:



Additional Information:

Project / Location:
Engineer:
Architect:
Contractor:

Submittal Notes