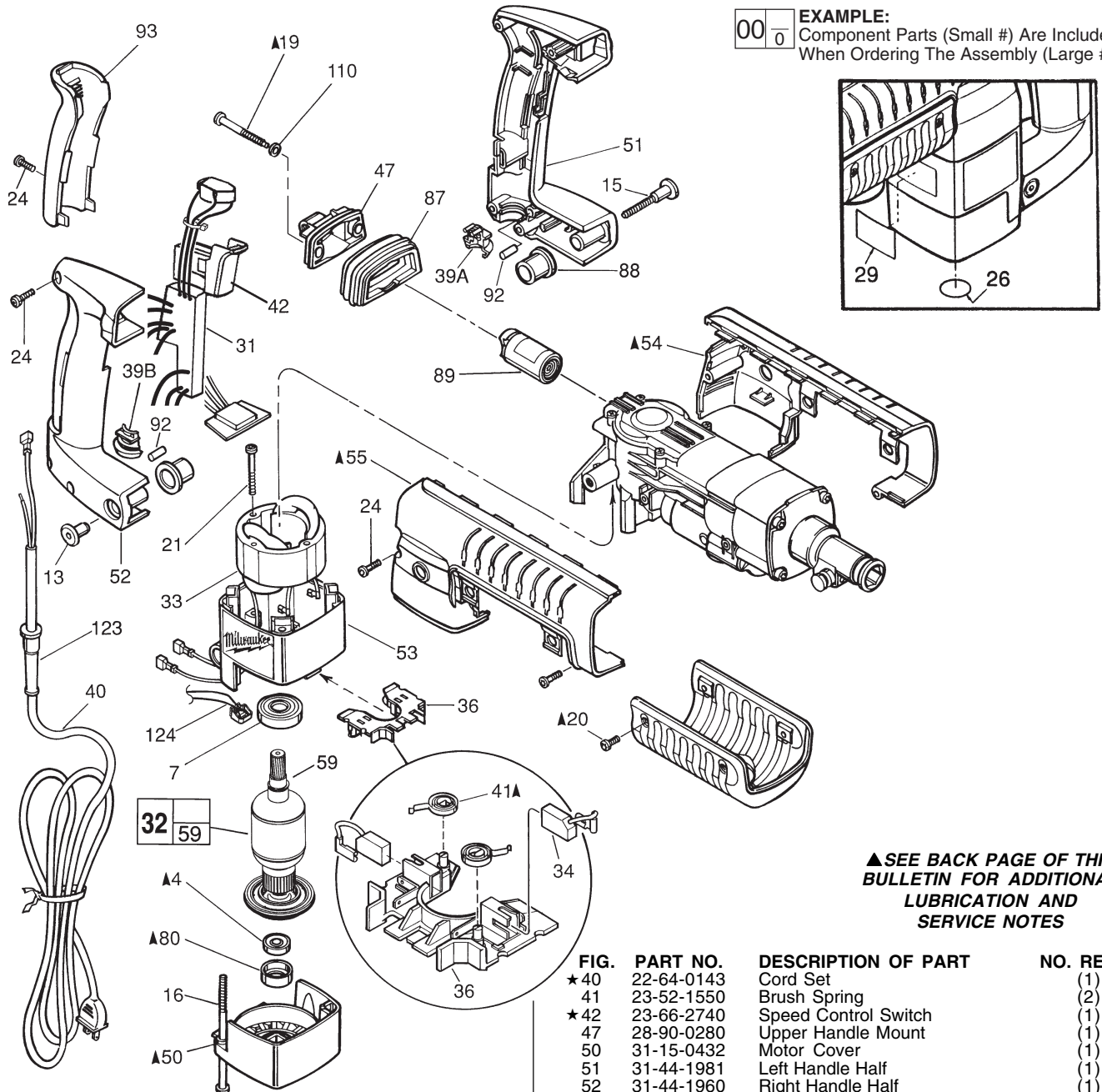


SPECIFY CATALOG NO. AND SERIAL NO. WHEN ORDERING PARTS		REVISED BULLETIN 54-24-0850	DATE Dec. 2006
CHIPPER HAMMER			
CATALOG NO.	5336-22	STARTING SERIAL NO.	216B
		WIRING INSTRUCTION 58-01-1206	

EXAMPLE:
 Component Parts (Small #) Are Included
 When Ordering The Assembly (Large #).



▲SEE BACK PAGE OF THIS BULLETIN FOR ADDITIONAL LUBRICATION AND SERVICE NOTES

FIG.	PART NO.	DESCRIPTION OF PART	NO. REQ.
	4	02-04-0847 Ball Bearing	(1)
	7	02-04-1518 Ball Bearing	(1)
	13	05-59-0100 Pivot Nut	(1)
	15	05-77-0100 Pivot Bolt	(1)
	16	05-81-0920 M6 x 1.0 x 120 Pan Hd. Slit. Tapt. T-27	(4)
	19	06-81-1805 Special Screw	(2)
	20	06-82-7252 8-32 x 3/8" Pan Hd. Slit. Tapt. T-20	(4)
	21	06-82-7425 8-16 x 2" Pan Hd. Slit. Plast. T-20	(2)
	24	06-95-6290 M5 x 2.24 x 18 Pan Hd. Slit. PT T-20	(7)
	25	06-65-3720 Dowel Pin-Knurled	(1)
	26	10-75-2760 Milwaukee Label	(1)
	29	12-20-3315 Service Nameplate Kit	(1)
★	31	14-20-1001 Electronics Assembly	(1)
★	32	16-50-0045 120 Volt Armature	(1)
★	33	18-50-0047 120 Volt Field	(1)
	34	22-18-0870 120 V Carbon Brush (2) Kit	(1)
	36	22-22-1480 Brush Carrier Assembly	(1)
	39A	31-17-0260 Lower Cord Clamp	(1)
	39B	31-17-0265 Upper Cord Clamp	(1)

FIG.	PART NO.	DESCRIPTION OF PART	NO. REQ.
★	40	22-64-0143 Cord Set	(1)
	41	23-52-1550 Brush Spring	(2)
★	42	23-66-2740 Speed Control Switch	(1)
	47	28-90-0280 Upper Handle Mount	(1)
	50	31-15-0432 Motor Cover	(1)
	51	31-44-1981 Left Handle Half	(1)
	52	31-44-1960 Right Handle Half	(1)
	53	31-50-0537 Motor Housing	(1)
	54	31-55-0240 Left Shroud	(1)
	55	31-55-0250 Right Shroud	(1)
	56	31-55-0225 Belly Shroud	(1)
	59	34-60-3620 Retaining Ring	(1)
	80	42-96-0130 Bearing Cup	(1)
	87	43-87-0030 Isolation Bellows	(1)
	88	43-87-0040 Pivot Isolator	(2)
	89	43-87-0060 Isolation Module Assembly	(1)
	90	43-98-0470 Rotostop Knob	(1)
	92	14-46-1001 Foam Slug Kit (Bag of 10)	(1)
	93	44-52-0580 Handle Cushion	(1)
	110	45-88-8555 Rubber Washer	(2)
	123	44-76-0210 Cord Protector	(1)
	124	Inductor Boat (Incl. with Fig. 31)	(1)
★	23-78-0110	Wire Tie (See 58-01-1206)	(2)