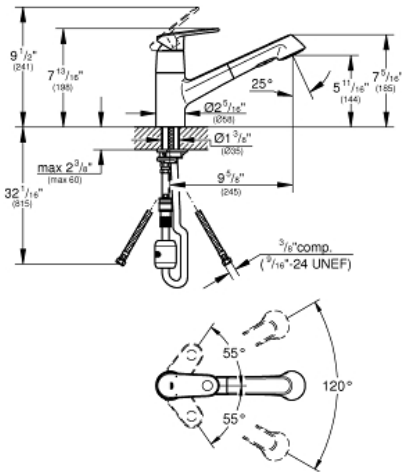


EUROPLUS
Single-Handle Kitchen Faucet
MODEL # 32946DC2

Pure Freude
an Wasser

GROHE

GROHE CANADA, INC. | 5900 Avebury Road, Mississauga, Ontario, Canada L5R 3M3
Phone: 905-271-2929 | Fax: 905-271-9494 | info@grohe.ca



Product Description:
EUROPLUS
Single-Handle Kitchen Faucet

Standard Specification:

- Single hole installation
- **GROHE StarLight** finish
- **GROHE SilkMove** 35mm (1.4") ceramic cartridge
- **Pull-out Dual Spray Control** - switches back and forth between regular flow and spray
- Diverter: mousseur/shower jet
- Automatic return to mousseur
- Adjustable flow rate limiter
- Swivel area 120°
- Metal lever handle
- Check valve included to prevent backflow
- Stainless steel flex lines
- Quick installation system
- Max Flow Rate: 6.6 L/min (1.75 gpm)

Applicable Codes & Standards:

- Energy Policy Act of 1992
- NSF 61
- ASME A112.18.1/CSA B125.1
- US Federal and State material regulations
- ICC/ANSI A117.1
- LOGO NSF

Color:

- 32946DC2 SuperSteel InfinityFinish