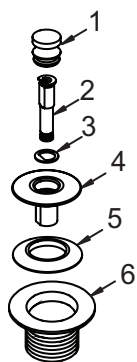


Item	Part #	Description
1	01010CP	PUSH PULL® Knob, brass
2	11584	Friction Ring (11504) and Post (11508)
3	01013CP	Stopper, brass
4	11507	Seal, 1 1/16" dia.
5	01016CP	Strainer Body, metal, 1.865" - 11.5 - 1.25"
6	10696	Drain Ell Washer, 1.5" gray
7	44006	Brass Drain Ell, 1.5" - 11.5
8	17GA-4.75	Drain Ell Tube (17g), 4.75"
	20GA-4.75	Drain Ell Tube (20g), 4.75"
	17GA-9.625	Drain Ell Tube (17g), 9.625" for 551-PP
	20GA-9.625	Drain Ell Tube (20g), 9.625" for 552-PP
9	41580	Brass Slip Nut
10	11583	Slip Joint Polywasher
11	17GA-3.5	Tail Piece (17g), 3.5"
	20GA-3.5	Tail Piece (20g), 3.5"
12	44001	Brass Tee
13	17GA-9.625	Overflow Ell Tube (17g), 9.625"
	20GA-9.625	Overflow Ell Tube (20g), 9.625"
	17GA-18.12	Overflow Ell Tube (17g), 18.125" for 551-PP
	20GA-18.12	Overflow Ell Tube (20g), 18.125" for 552-PP
14	44003	Overflow Ell, Brass
15	40675	Overflow Ell Washer for Brass
16	11530	Retainer Plate
17	41540	Retainer Plate Screw
18	01003CP	Overflow Plate, 2-Hole, metal
19	01024CP	Overflow Plate Screw, 2.25"

* Please indicate finish desired.

PUSH PULL®
Coarse Thread

1.	01010CP
	01010__*
2.	11584
3.	01013CP
	01013__*
4.	11507
5.	01016CP
	01016__*



PRESFLO®
Coarse Thread

1.	11145CP
	11145__*
2.	11132
3.	11060CP
	11060__*
4.	96039:
	Suction Cup for removing stopper

FOOT ACTUATED
Coarse Thread

1.	38412-CP
	38412-__*
2.	11492-CP
	01016-__*

*If finish other than Chrome is desired, please use this part number and indicate desired finish.

Finishes Available in the 501/551 Series:

Tub Closure:	PUSH PULL®	LIFT & TURN	PRESFLO®	FOOT ACT.
CP - Chrome Plated	•	•	•	•
AP - Aged Pewter	•	•	•	•
BB - Brushed Bronze	•	•	•	•
BN - Brushed Nickel	•	•	•	•
BO - Bone	•	•	•	•
BS - Biscuit	•	•	•	•
BZ - Oil-Rubbed Bronze	•	•	•	•
CB - Chrome Brushed	•	•	•	•
NP - Nickel Polished	•	•	•	•
PB - Polished Brass	•	•	•	•
WH - White	•	•	•	•
WI - Wrought Iron	•	•	•	•

