

# MOEN®

## Quick Connect Fittings

### Installation and Removal



Tool needed: Pliers (optional)



#### Identify your connection style and move to the appropriate step.

Below are the different hoses and quick connect fittings addressed by this document. The two hose styles are found on both Hydrolock and Duralock connection systems. These are only included for reference.

#### Hose Ends



White Tip Brass Tip

#### A. Hydrolock Fittings



Hose Under Faucet Double Female Female Small Double

Go to step 1 to remove or step 4 to install

#### B. Duralock Fitting



Go to step 10 to remove or step 12 to install

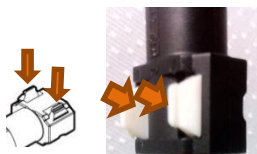
## Disconnecting a Hydrolock Fitting

1.

**Caution: Always turn your water supplies off before disassembling your faucet. With the supplies turned off, move your faucet's handle to the "on" position to relieve pressure.**



2. Find the two white plastic tabs at the end of the Quick Connect fitting. Squeeze these tabs together with your fingers or pliers. As you squeeze these tabs they will become pushed into the black plastic housing. This will cause the white button on the opposite side of to pop out a little.



3. The Quick Connect fitting is now unlocked. Slide the fitting off.

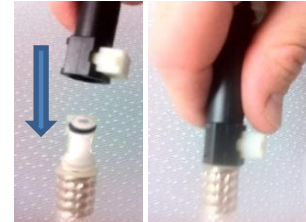
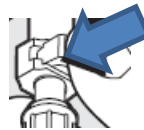


# Connecting a Hydrolock Fitting

4. Inspect the Quick Connect fitting to insure the white button is pulled out and slightly raised from the black plastic.

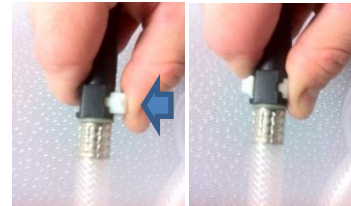


5. Slide the Quick Connect onto the shaft until the Quick Connect is fully seated and can not be pushed any further. Make certain the hose is pushed into the Quick Connect straight and not at an angle.



6. Push the white button until you hear a click.

7. The white button should now be depressed and there should be two white tabs protruding from the side opposite of the button.



8. Turn water supplies on and, with water running through the Hydrolock fitting, inspect the area for leaks. If there is a leak from the Hydrolock fitting, please refer to the "Special Note" section below.

9. If there is not a leak from the Hydrolock fitting, the connection is complete and the item is ready to use. This item can be disconnected and reconnected as needed. For disconnecting this item, please refer the "Disconnecting a Hydrolock Fitting" section in this document.



**You are all done!**

## Special Note

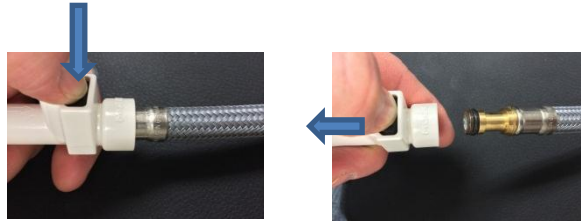
### Resolving a Leak from a Hydrolock Fitting Use these steps if a leak appears right after installation

1. Remove the Hydrolock fitting by using the "Disconnecting a Hydrolock" section in this document.
2. Inspect the end of the shaft. Insure that this O-ring is in the groove.
3. Reconnect the Quick Connect using the "Connecting a Quick Connect" section in this document. Make certain the hose is pushed into the Quick Connect straight and not at an angle. This will allow the fitting to seal properly.



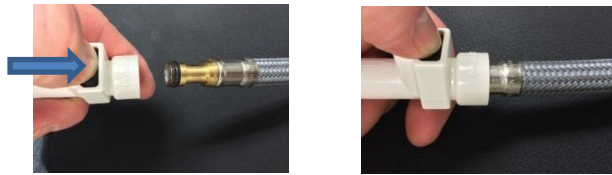
## Disconnecting a Duralock Fitting

10. **Caution: Always turn your water supplies off before disassembling your faucet. With the supplies turned off, move your faucet's handle to the "on" position to relieve pressure.**
11. Push the hose gently into the Duralock connector and then push the black button. While holding this black button pull the hose end out of the Duralock fitting.



## Connecting a Duralock Fitting

12. Hold the Duralock fitting without pushing the button. Slide the hose end into the this fitting until you hear the fitting "click". This indicates the lock has engaged. If you are unable to get this fitting to lock, see the special note at the end of this section



13. If there is not a leak from the Duralock fitting, the connection is complete and the item is ready to use. This item can be disconnected and reconnected as needed. For disconnecting this item, please refer the "Disconnecting a Duralock Fitting" section in this document.

**You are all done!**

## Special Note

### If the Duralock Fitting is Unable to be Locked

Use these steps if you are unable to get the hose in all of the way or if the fitting will not lock onto the hose end.

4. If needed, remove the fitting by using the "Disconnecting a Duralock Fitting" section in this document.
5. Inspect the end of the fitting to insure there is not a blocked passageway. A clear passageway will either be hollow or appear like the photo to the right. Remove any item obstructing the passageway and then reinstall using the "Connecting a Duralock Fitting" section in this document.

