

9

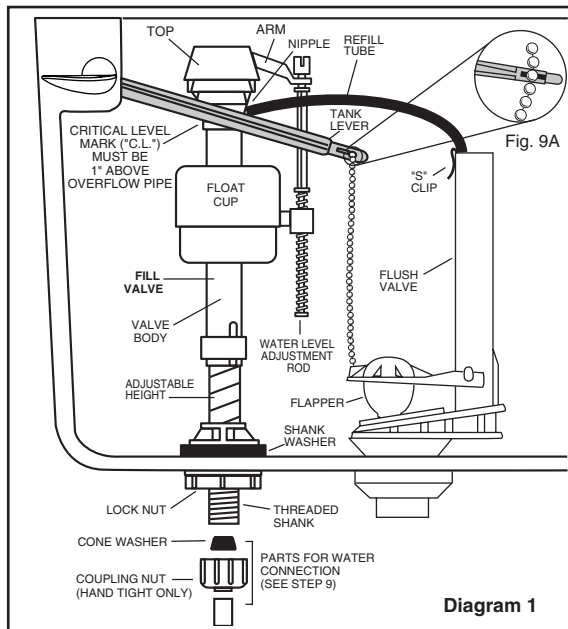


Diagram 1

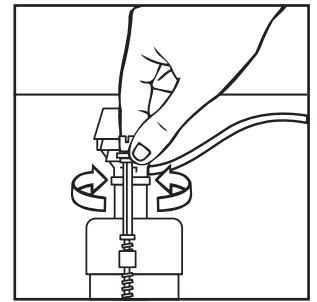
ADJUSTMENTS

- a. Adjust water level. Water level should be adjusted to level indicated on tank by adjusting float cup.

See Step 10 for water level adjustment method.

- b. If bowl fails to siphon, an adjustment may be required with the lift chain. Simply remove the bead chain from the retainment clip (see Fig. 9A) and take up slack on the chain, and reinsert on lift rod. Make sure the chain is not too tight.

10



Turn on water supply. Submerge the FLOAT CUP under the water for 30 seconds. Adjust the water to desired level by turning WATER LEVEL ADJUSTMENT ROD and moving FLOAT CUP up or down.

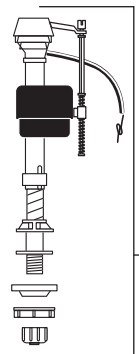
11

CARE AND CLEANING

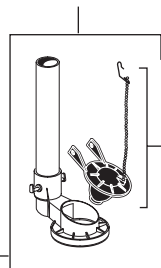
When cleaning your toilet, wash it with mild, soapy water, rinse thoroughly with clear water and dry with a soft cloth. Avoid detergents, disinfectants, or cleaning products in aerosol cans. NEVER use abrasive scouring powders or abrasive pads on your toilet seat. Some bathroom chemicals and cosmetics may damage the seat's finish.

⚠ WARNING: Do not use in-tank cleaners. Products containing chlorine (calcium hypochlorite) can seriously damage fittings in the tank. This damage can cause leakage and property damage.
American Standard shall not be responsible or liable for any tank fitting damage caused by the use of cleaners containing chlorine (calcium hypochlorite).

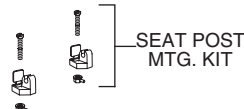
FLUIDMASTER WATER CONTROL



FLUSH VALVE

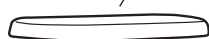


SEAT AND COVER
(INCLUDES MTG. KIT)



SEAT POST
MTG. KIT

TANK COVER



FLAPPER ASSEMBLY

TRIP LEVER

BOLT CAPS



COMPACT CADET® 3 ONE PIECE REPAIR PARTS LIST

Repair parts are determined by toilet tank number which can be found marked inside tank.

NOTE: "XXX" represents color options. Specify when ordering.

COMPONENT	DESCRIPTION	2568			2907
		1.6 GPF	1.28 GPF	1.6 GPF	
735125-XXX0A	Tank Cover	✓	✓		
735139-XXX0A	Tank Cover				✓
5332.016.XXX	Seat - Elongated	✓	✓		
5357.016.XXX	Seat - Elongated				✓
034783-XXX0A	Bolt Cap Kit	✓	✓	✓	✓
738903-XXX0A	Trip Lever - Left Hand	✓	✓		
7381084-XXX0A	Trip Lever - Left Hand				✓
738919.XXX0A	Trip Lever - Right Hand	✓	✓		
738565-409.0070A	Inlet Valve	✓	✓		
738565-440.0070A	Inlet Valve				✓
738942-1000A	Flush Valve - 1.6 GPF	✓			
738942-1030A	Flush Valve - 1.6 GPF				✓
738920-0070A	Flapper Assembly - 1.6 GPF	✓			✓
738942-1020A	Flush Valve - 1.28 GPF		✓		
7381043-4000A	Flapper Assembly - 1.28 GPF		✓		

American Standard

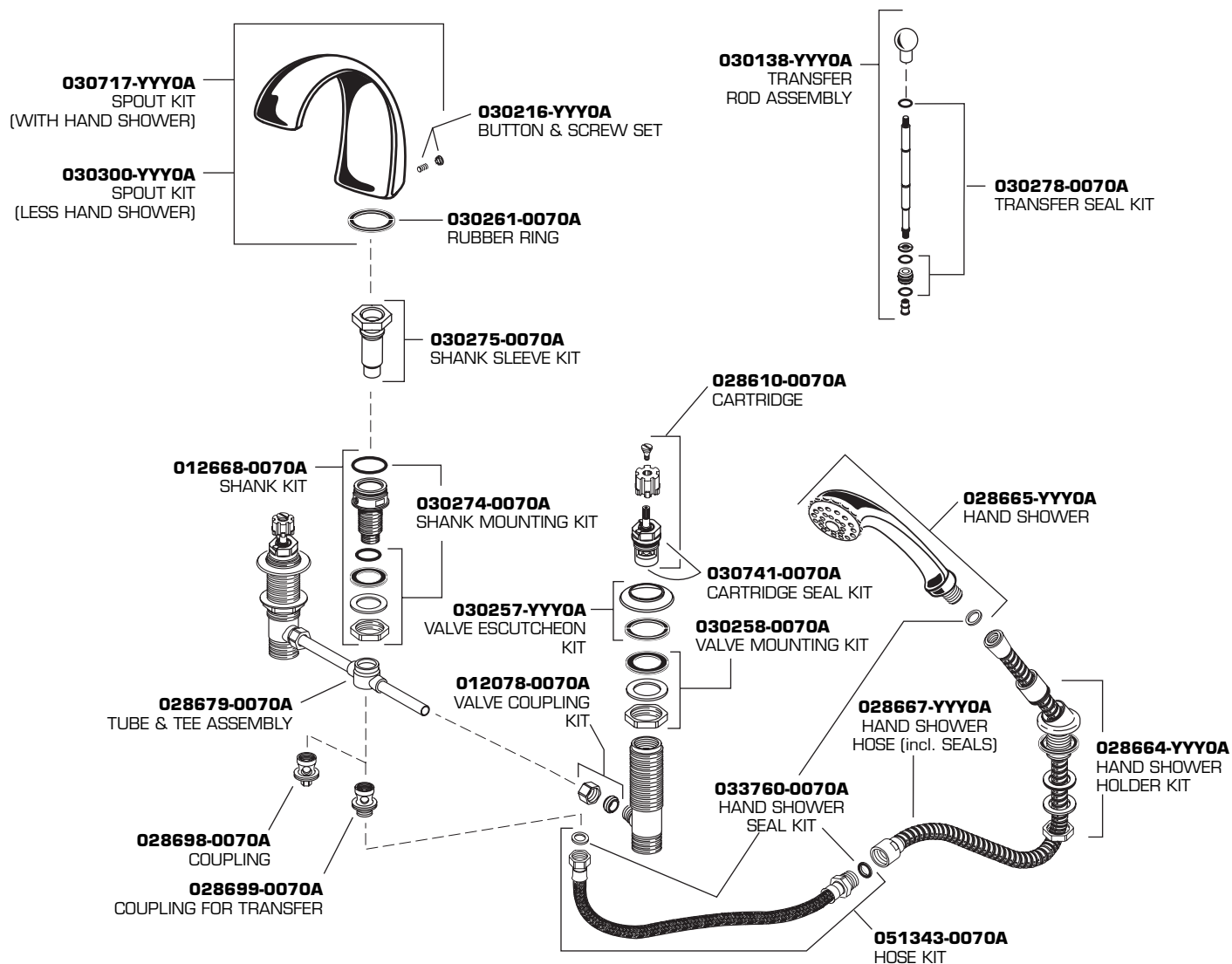
Replace the "YYY" with appropriate finish code

CHROME	002
WHITE	020
BLK. NICKEL/BRASS	062
BLACK SMITH (PVD)	078
POLISHED BRASS	099
SATIN/CHROME	221
SATIN NICKEL	295
SATIN/BRASS	297
CHROME/BRASS	299

AMARILIS

LEXINGTON DECK-MOUNT BATH FILLER MODEL NUMBERS

8970 SERIES
8971 SERIES



7

EverClean™ Finish Care Instructions

American Standard's EverClean finish will wipe clean with a soft, dry cloth. A soft cloth with clean water may also be used, if desired. No additional cleaning products are required.

DO NOT USE: Soaps, acid, polish, abrasives, harsh cleaners, or a cloth with a coarse surface.