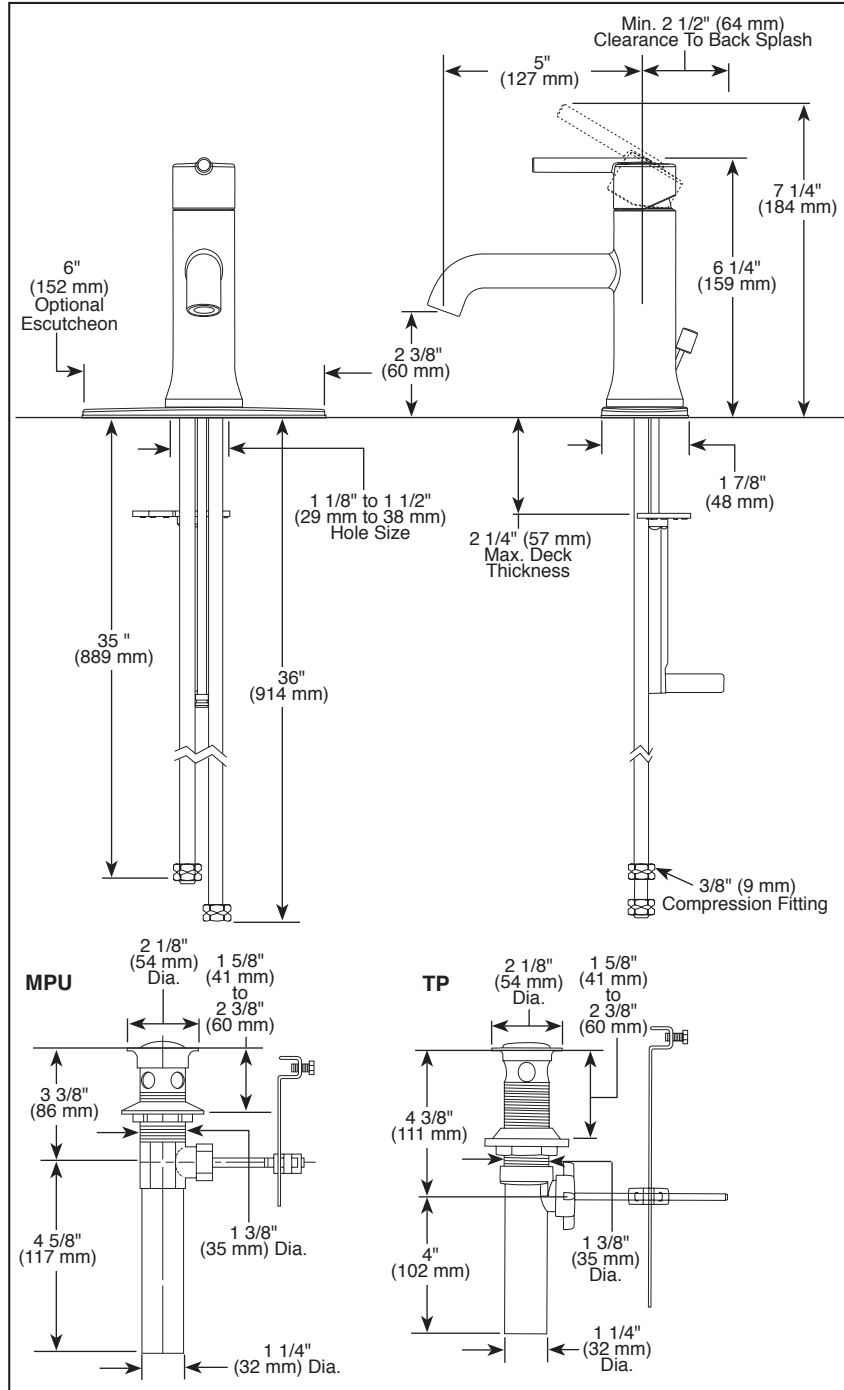


Submitted Model No.: \_\_\_\_\_

Specific Features: \_\_\_\_\_



▲ Designate Proper Finish Suffix

Delta reserves the right (1) to make changes in specifications and materials, and (2) to change or discontinue models, both without notice or obligation. Dimensions are for reference only. See current full-line price book or [www.deltafaucet.com](http://www.deltafaucet.com) for finish options and product availability.

DSP-L-559LF-MPU Rev. F



## LAVATORY FAUCETS

- Trinsic® Collection
- Single Handle Deck Mount

### STANDARD SPECIFICATIONS:

- Maximum 1.20 gpm @ 60 psi, 4.54 L/min @ 414 kPa
- GPM indicates max. 1.00 gpm @ 60 psi, 3.80 L/min @ 414 kPa
- HGM indicates max. 0.50 gpm @ 60 psi, 1.90 L/min @ 414 kPa
- 1 or 3 hole mount (escutcheon optional, included)
- Diamond coated ceramic cartridge
- Red/blue indicator markings
- 3/8" O.D. straight, staggered PEX supply tubes
- Solid brass body
- Models with suffix "MPU" have metal drain with pop-up type fitting with plated flange and stopper
- Models with suffix "TP" have 50/50 pop-up type fitting with plated flange and stopper
- Models with suffix "LPU" are less pop-up

### WARRANTY

- Lifetime limited warranty on parts (other than electronic parts and batteries) and finishes; or, for commercial users, for 5 years from the date of purchase.
- 5 year limited warranty on electronic parts (other than batteries); or for commercial users, for 1 year from the date of purchase. No warranty is provided on batteries.



### COMPLIES WITH:

- ASME A112.18.1 / CSA B125.1
- ASME A112.18.2 / CSA B125.2
- ASME A112.18.6

♿ Indicates compliance to ICC/ANSI A117.1

- \* EPA WaterSense®
- Verified compliant with .25% weighted average Pb content regulations.



55 E. 111th Street, Indianapolis, Indiana 46280  
 350 South Edgeware Road, St. Thomas, Ontario Canada N5P 4L1  
 © 2016 Masco Corporation of Indiana