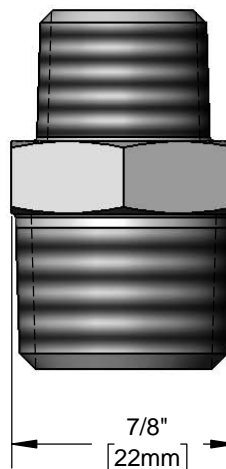
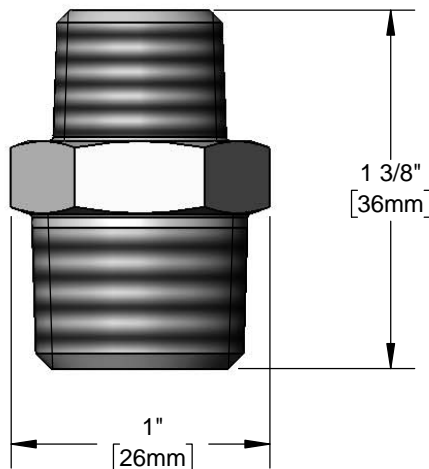
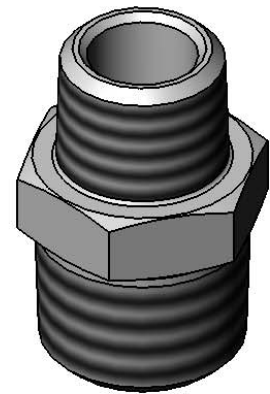




### Architect/Engineering Specifications:

Chrome plated brass 3/8" NPT male x 1/2" NPT male adapter. Certified to ASME A112.18.1/CSA B125.1, NSF 61-Section 9 and NSF 372.

Job Name \_\_\_\_\_  
Model Specified \_\_\_\_\_ Quantity \_\_\_\_\_  
Variations Specified \_\_\_\_\_  
Date \_\_\_\_\_



### Features & Benefits:

- Chrome plated brass adapter
- 3/8" NPT male x 1/2" NPT male adapter
- Material: Chrome plated brass

### Product Compliance:

- ASME A112.18.1 / CSA B125.1
- NSF 61 - Section 9
- NSF 372 (Low Lead Content)



**Warranty:** One Year (Limited)

### Performance Data:

- N/A

