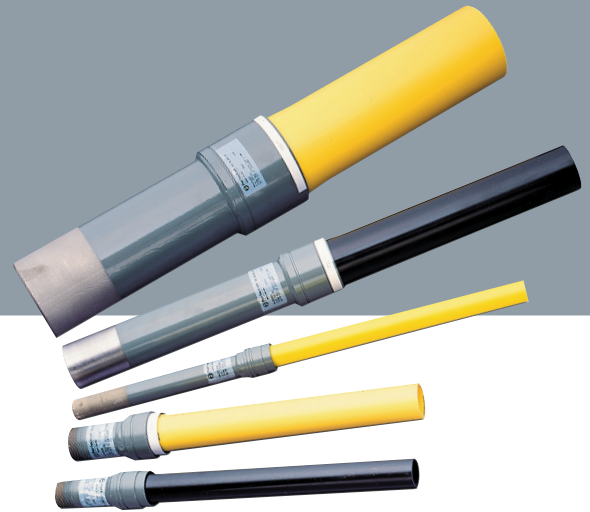


Transition Fittings



Steel-to-polyethylene transition fittings provide simple, compact installations.

Features

- Steel-to-polyethylene transition for all gas applications
- Threaded and weld-end outlets
- Sizes from 1/2" IPS x 1/2" CTS to 12" IPS x 12" IPS
- Positive seal with added "O" ring protection
- Permanent factory assembly
- Pull-out strength greater than the PE piping
- Meets or exceeds the requirements of ASTM D-2513 category 1, ANSI B 1.20, ANSI B 31.8, US DOT Part 192, NFPA-58, and CSA B137.4
- Metric sizes available
- Available in PE 2406 (yellow), PE 3408 (black) and PE 4710 (black) materials

Elster Perfection's Transition Fittings are ideal for gas applications requiring a steel-to polyethylene transition. All Elster Perfection transition fittings are laboratory and field tested for regulatory compliance.



Transition fittings - connect with safety, integrity and speed

Size (Steel-to-PE)	SDR/Wall	PE Material	Part Number	
			Threaded	Weld-End
1/2" IPS x 1/2" CTS	.090"	2406/XMD	700004	700104
1/2" IPS x 1/2" CTS	.090"	3408/XHI	700006	700106
3/4" IPS x 1/2" CTS	.090"	3408/M81		700303
3/4" IPS x 1/2" CTS	.090"	2406/XMD	700205	700310
3/4" IPS x 1/2" CTS	.090"	3408/XHI		700307
3/4" IPS x 3/4" IPS	SDR 11	3408/M81		700901
3/4" IPS x 3/4" IPS	SDR 11	2406/XMD	700802	700902
3/4" IPS x 3/4" IPS	SDR 11	3408/XHI	700803	700903
3/4" IPS x 3/4" IPS	SDR 11	2406/LHI		700914
3/4" IPS x 1" CTS	.099"	2406/XMD	703201	703300
1" IPS x 3/4" IPS	SDR 11	2406/XMD		701102
1" IPS x 1" CTS	.090"	2406/XMD	701406	701506
1" IPS x 1" CTS	.090"	3408/XHI		701509
1" IPS x 1" CTS	.099"	2406/XMD	701407	701507
1" IPS x 1" CTS	.099"	3408/XHI		701510
1" IPS x 1" CTS	.121"	2406/XMD		701508
1" IPS x 1" CTS	.121"	3408/XHI	701411	
1" IPS x 1" IPS	SDR 11	3408/M81	701201	701301
1" IPS x 1" IPS	SDR 11	2406/XMD	701202	701302
1" IPS x 1" IPS	SDR 11	3408/XHI	701203	701303
1" IPS x 1" IPS	SDR 11	2406/LHI		701310
1-1/4" IPS x 1" CTS	.090"	3408/M81		701903
1-1/4" IPS x 1" CTS	.090"	2406/XMD		701910
1-1/4" IPS x 1-1/4" IPS	SDR 10	2406/XMD	702204	702304
1-1/4" IPS x 1-1/4" IPS	SDR 11	3408/M81	702203	702303
1-1/4" IPS x 1-1/4" IPS	SDR 11	2406/XMD	702205	702305
1-1/4" IPS x 1-1/4" IPS	SDR 11	3408/XHI	702207	702307
1-1/2" IPS x 1-1/2" IPS	SDR 11	2406/XMD	702401	
1-1/2" IPS x 1-1/2" IPS	SDR 11	3408/M81	702402	
2" IPS x 2" IPS	SDR 11	3408/M81	702601	702730
2" IPS x 2" IPS	SDR 11	2406/XMD	702602	702702
2" IPS x 2" IPS	SDR 11	3408/XHI	702603	702703
2" IPS x 2" IPS	SDR 11	2406/LHI		702712
3" IPS x 3" IPS	SDR 11	2406/XMD	702802	702902
3" IPS x 3" IPS	SDR 11	3408/XHI	702803	702903
3" IPS x 3" IPS	SDR 11.5	2406/XMD		702906
4" IPS x 4" IPS	SDR 11	3408/M81	703001	703129
4" IPS x 4" IPS	SDR 11	2406/XMD	703002	703102
4" IPS x 4" IPS	SDR 11	3408/XHI	703003	703103
4" IPS x 4" IPS	SDR 11.5	2406/XMD		703113
6" IPS x 6" IPS	SDR 11	2406/XMD	704000	704100
6" IPS x 6" IPS	SDR 11	3408/XHI	704001	704101
6" IPS x 6" IPS	SDR 11	3408/M81		704116
6" IPS x 6" IPS	SDR 11.5	2406/XMD		704114
6" IPS x 6" IPS	SDR 13.5	2406/XMD		704106
6" IPS x 6" IPS	SDR 13.5	3408/XHI		704705
8" IPS x 8" IPS	SDR 11	2406/XMD	704200	704300
8" IPS x 8" IPS	SDR 11	3408/XHI		704301
8" IPS x 8" IPS	SDR 11	3408/M81	704203	704303
8" IPS x 8" IPS	SDR 11	2406/LHI		704314
8" IPS x 8" IPS	SDR 13.5	3408/M81		704305
8" IPS x 8" IPS	SDR 13.5	2406/XMD		704306
8" IPS x 8" IPS	SDR 13.5	3408/XHI		704307
10" IPS x 10" IPS	SDR 11	2406/XMD	704400	704500
10" IPS x 10" IPS	SDR 11	3408/XHI	704401	
10" IPS x 10" IPS	SDR 11	3408/M81	704403	
12" IPS x 12" IPS	SDR 13.5	2406/XMD		704715
12" IPS x 12" IPS	SDR 11	2406/XMD	704600	704700
12" IPS x 12" IPS	SDR 11	3408/XHI	704601	
12" IPS x 12" IPS	SDR 11	3408/M81		704714

Other configurations available

Polyethylene (PE) Material Codes	PE 3408 (High Density)
PE 2406 (Medium Density)	LHI - Performance high density (6800)
XMD - Performance medium density	M81 - Performance high density (M8100)
XHI - Performance high density	

About Elster Group

A world leader in advanced metering infrastructure, integrated metering, and utilization solutions to the gas, electricity and water industries, Elster's systems and solutions reflect over 170 years of knowledge and experience in measuring precious resources and energy.

Elster provides solutions and advanced technologies to help utilities more easily, efficiently and reliably obtain and use advanced metering intelligence to improve customer service, enhance operational efficiency, and increase revenues. Elster's AMI solutions enable utilities to cost-effectively generate, deliver, manage, and conserve the life-essential resources of gas, electricity, and water.

Elster has over 7500 staff and operations in 38 countries in North and South America, Europe, and Asia.

Elster Perfection
222 Lake Street
Madison, OH 44057
USA

T +1 440 428 1171
F +1 866 828 6862

www.elster-perfection.com

© 2008 Elster Perfection. All rights reserved.

Information contained herein is subject to change without notice. Product specifications may change. Contact your Elster Perfection representative for the most current product information. Printed in the United States.

EP-DS0020-EN-P - March 2008
Supersedes LITC3-02000