



Satisfy Professional's Needs

18V+18V Lithium-ion Garden Series



Powered by two 18V Li-ion batteries in series

Two 18V Li-ion batteries can be directly installed on the machine to supply energy to the powerful 36V DC motor drive system.



The compatible batteries are:



1.5Ah BL1815N



3.0Ah BL1830



4.0Ah BL1840



5.0Ah BL1850

When different capacity batteries are used together (for example, 1.5Ah BL1815N and 3.0Ah BL1830, or fully charged BL1830 and 70% charged BL1830), the machine stops when the battery with less capacity gets empty.

Battery capacity warning lamp



One warning lamp for each individual battery

Photo : DUB361

XPT (eXtreme Protection Technology)



For use in outdoor applications or harsh environments, protection from dust and dripping water is enhanced.



Powered by two 18V Li-ion batteries in series

Cordless Chain Saw

DUC252/C 250mm (10")

DUC302 300mm (12")



Increased cutting speed with more powerful motor



Ergonomic top handle and rubberized soft grip

Front-hand-guard-activated kickback brake

- Push of front hand guard stops the blade instantaneously.
- Anti-kickback guard is not needed on the tip of guide bar, increasing blade maneuverability for a wider range of applications.

Battery capacity warning lamp

Photo: DUC252

DUC252, DUC302: with sprocket nose guide bar.



DUC252C: with carving guide bar.

Retractable metal hook

allows to check how much oil is left from outside.



Adjusting the chain lubrication

You can adjust the oil pump feed rate with the adjusting screw.

Chain oil level window allows to check how much oil is left from outside.

New adjustment system for easier tool-less saw chain tension adjustment

Extendable lever provides higher tightening torque.

Dial for easier adjustment of saw chain tension



Cordless Chain Saw

DUC252 250mm (10") / DUC252C 250mm (10") / DUC302 300mm (12") 442

	DUC252	DUC252C	DUC302
Chain speed per minute	500m (1,640ft)	500m (1,640ft)	500m (1,640ft)
Guide bar length	250mm (10")	250mm (10")	300mm (12")
Chain blade	Pitch : 3/8"	Pitch : 1/4"	Pitch : 3/8"
Sound pressure level	84.4dB(A)	84.4dB(A)	84.4dB(A)
Sound power level	95.4dB(A)	95.4dB(A)	95.4dB(A)
Dimensions (L x W x H)	545x234x198mm (21-1/2"x9-1/4"x7-3/4")	545x234x198mm (21-1/2"x9-1/4"x7-3/4")	600x234x198mm (23-5/8"x9-1/4"x7-3/4")
Net weight* With two BL1815N batteries:	4.1kg (9.0lbs)	4.1kg (9.0lbs)	4.1kg (9.0lbs)
With two BL1830 or BL1840 batteries:	4.6kg (10.2lbs)	4.6kg (10.2lbs)	4.7kg (10.3lbs)

- Brake
- Chain Brake
- Soft Start
- Automatic Oiling

Standard Equipment :
Fast Charger, Battery Cartridge x2, Saw Chain, Guide Bar, Guide Bar Cover

*weight according to EPTA-Procedure 01/2003

Items of standard equipment and specifications may vary by country or area.

Powered by two 18V Li-ion batteries in series

Cordless Hedge Trimmer

DUH551 550mm (21-5/8")

DUH651 650mm (25-1/2")



Low noise level

Extremely low noise emission compared with our 21mL petrol-powered machine, and almost the same as our AC machine.

5 position rotating rear handle

- Locks at 45° and 90° left and right and 0°.
- Makes vertical and angled trimming easier and faster.



Well balanced tool design

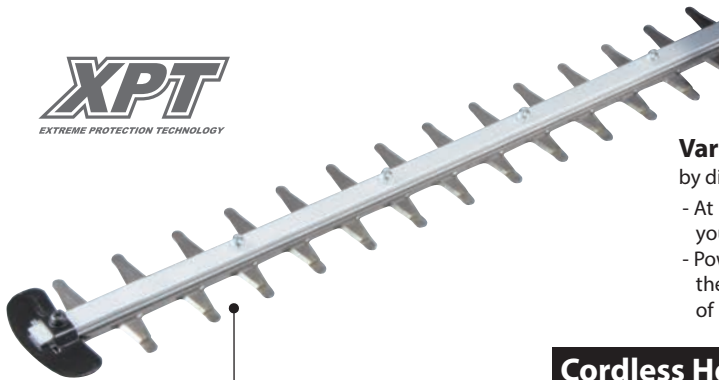
The stress on the front arm and hand is reduced by positioning the battery port on the rear end of the tool.

High-performance trimming

No-load speed is higher than any other competitor's products, providing high-performance trimming.



Battery capacity warning lamp



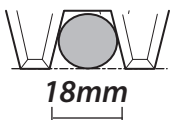
Variable speed control

by dial for more versatility

- At low stroke speed for trimming soft young leaves into desired hedge shape
- Powerful and fast trimming by setting the dial at "6", the highest stroke speed of 1,800 min.-1



Maximum branch diameter



Indicates maximum diameter of the branch that can be received between adjacent two blade teeth.

Cordless Hedge Trimmer

DUH551 550mm (21-5/8") / **DUH651** 650mm (25-1/2")

442 min

	DUH551	DUH651
Blade length	550mm (21-5/8")	650mm (25-1/2")
Strokes per minute (spm)	1,000-1,800	1,000-1,800
Sound pressure level	81.5dB(A)	82dB(A)
Sound power level	91dB(A)	91.1dB(A)
Dimensions (L x W x H)	1,065x225x200mm (42"x8-7/8"x7-7/8")	1,135x225x200mm (44-3/4"x8-7/8"x7-7/8")
Net weight* With two BL1815N batteries:	4.6kg (10.2lbs)	4.7kg (10.3lbs)
With two BL1830 or BL1840 batteries:	5.1kg (11.3lbs)	5.2kg (11.4lbs)



Variable Speed



Brake



Soft Start

Standard Equipment :

Fast Charger, Battery Cartridge x2, Blade Cover

weight according to EPTA-Procedure 01/2003 Items of standard equipment and specifications may vary by country or area.

Powered by two 18V Li-ion batteries in series

Cordless Grass Trimmer

DUR361U Bike handle

DUR362L loop handle



Brushless DC motor

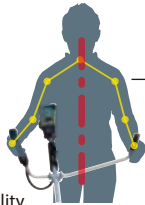
- Maintenance-free due to no brush
- Energy production is more efficient than brushed DC motor because of no friction loss caused by brushes, enabling to lower amperage for reduced heat production and increased work amount on a single full battery charge.



Minimum Noise Pollution and Low Vibration

Ergonomic handle bar of Off-set design

- designed so that the vertical center line of the handle bar stays aligned with that of user
- Enables user to work in a comfortable posture with less fatigue throughout operation.
 - Provides higher maneuverability.



Waist cushion for added comfort in long continuous operation.

Dual battery fuel gauge

indicates the power remaining in each battery individually in 3 stages with 3 LEDs.



Soft grip of ergonomic design

DUR361U Bike handle

4-tooth metal blade or TCT Saw blade with a cutting width of 230mm



Small protector

for Metal blade and Plastic blade

Nylon cutting head with a cutting width of 300mm

Metal blade can be set in the region without standards.

Wire guard



DUR362L loop handle

Electric brake

stops the blade rotation gently but fast, allowing user to quickly resume operation.

Ergonomically designed, large loop handle

provides higher maneuverability, more comfort and better control while minimizing hand fatigue and pain.

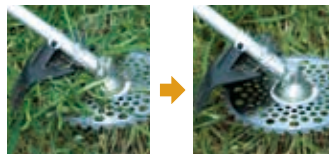
Small protector

for Nylon cutting head and Plastic blade



Grass clipping removal function

Equipped with reverse switch for easy removal of grass clippings stuck on the blade; grass clippings can be removed from and around the blade by slow reverse rotation of the blade.



Variable speed control by dial

When the grass is not so thick, long nor tough the rotational speed can be lowered for efficient energy use, providing longer runtime.



Cordless Grass Trimmer

DUR361U Bike handle / DUR362L loop handle

- Variable Speed
- Brake
- Reversing
- Soft Start

	DUR361U	DUR362L
No load speed (rpm)	3,500-7,300	3,500-6,600
Spindle size	M8 x 1.25LH	M8 x 1.25LH
Sound pressure level	82dB(A)	80dB(A)
Sound power level	94dB(A)	95dB(A)
Dimensions (L x W x H)	1,888x600x458mm (74-1/2"x23-5/8"x18")	1,856x286x246mm (73"x11-1/4"x9-11/16")
Net weight* With two BL1815N batteries:	-	5.1kg (11.3lbs)
With two BL1830 or BL1840 batteries:	5.9kg (13.1lbs)	5.6kg (12.3lbs)

Standard Equipment : Fast Charger, Battery Cartridge x2, Blade (DUR361U only), Nylon Cutting Head, Safety Goggles, Shoulder Strap, Wrenches

*weight according to EPTA-Procedure 01/2003 *Items of standard equipment and specifications may vary by country or area.*

Powered by two 18V Li-ion batteries in series

Cordless Blower

DUB361 Blower function only



Cleans up leaves and garden debris easily with powerful maximum air velocity of 93m/sec. and large maximum air volume of 0.073m³/sec.

**Lightweight at
2.6kg (5.9lbs)
with BL1815N (x2)**

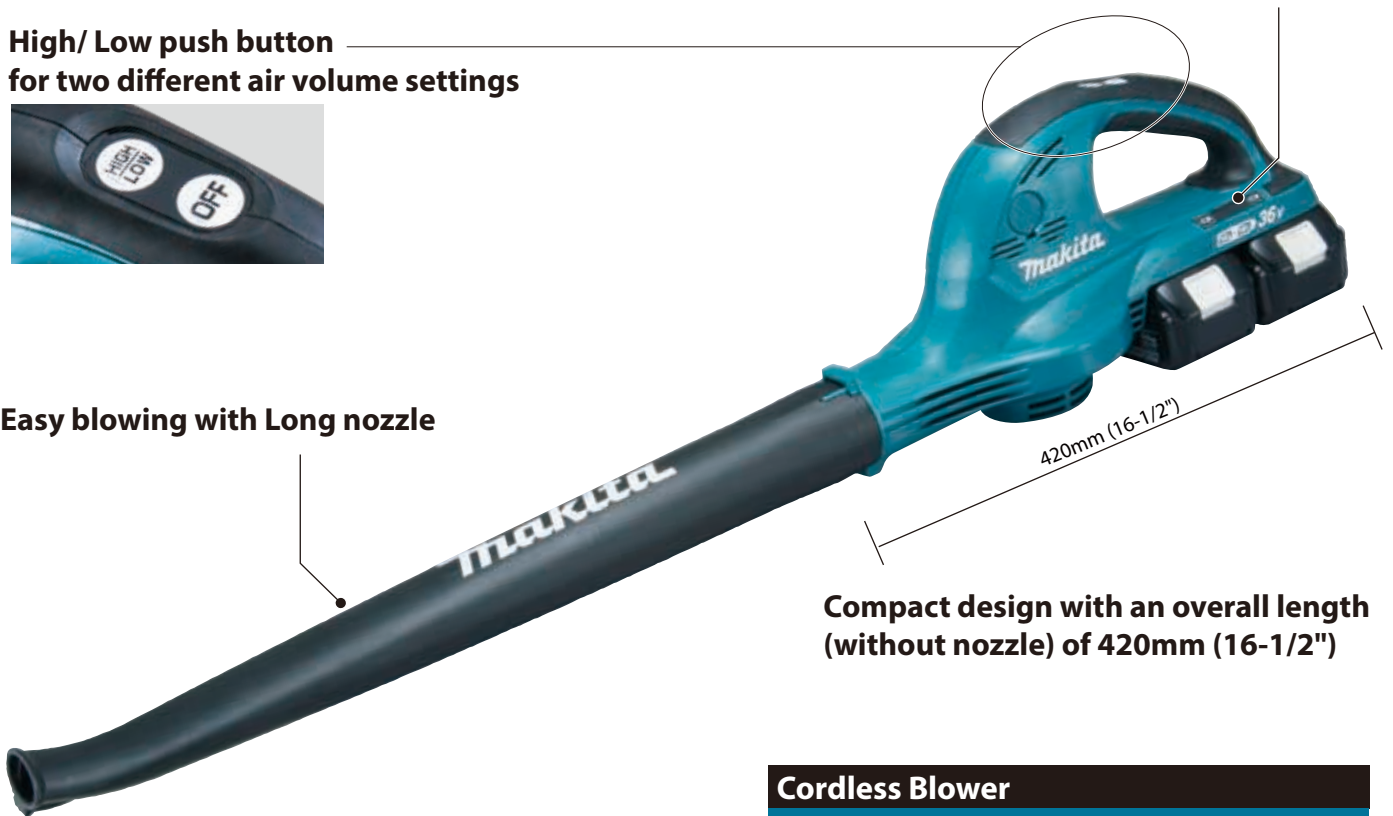
Ideal for use in public spaces or among residential areas with low noise emission

High/ Low push button for two different air volume settings



Battery capacity warning lamp

Easy blowing with Long nozzle



Compact design with an overall length (without nozzle) of 420mm (16-1/2")



Cordless Blower		430
DUB361		
Air volume	Hi: 4.4m ³ /min Lo: 2.6m ³ /min	
Air speed	Hi: 93m/s Lo: 57m/s	
No load speed (rpm)	Hi: 17,000 Lo: 10,000	
Sound pressure level	82.3dB(A)	
Sound power level	94.7dB(A)	
Dimensions (L x W x H)	905x141x194mm (35-5/8"x5-5/8"x7-5/8")	
Net weight*	With two BL1815N batteries: 2.6kg (5.9lbs) With two BL1830 or BL1840 batteries: 3.1kg (6.9lbs)	
Standard Equipment:	Fast Charger, Battery Cartridge x2, Long Nozzle, Shoulder Strap	
Electronic 2-Speed		

*weight according to EPTA-Procedure 01/2003

Items of standard equipment and specifications may vary by country or area.

Powered by two 18V Li-ion batteries in series

Cordless Lawn Mower DLM380



Lock Key

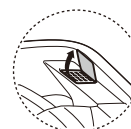
Remove the lock key before inspecting, adjusting, cleaning, servicing, leaving and storing the mower.



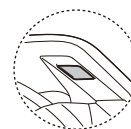
Grass box with Grass level indicator

A grass level indicator is added on the top of the grass box for the user to check whether the box is empty or full:

- The hinged indicator plate will open up and stay at high angles during mowing operation if the box is empty.
- The angle of the indicator plate becomes lower as grass clippings accumulate in the box.
- The indicator plate will be almost closed if the box is full.



empty



full

Easier installation and removal of the dust bag

Battery capacity warning lamp

When the remaining battery capacity of one of the batteries decreases below a certain level, the corresponding lamp starts blinking to remind the operator to replace the battery.



Single-lever cutting height adjustment

Easily adjustable to 6 different heights from 25 to 75mm



Cordless Lawn Mower

DLM380 380mm(15")

Cutting width	380mm (15")
Cutting height	25-75mm (1 - 2-15/16")
No load speed (rpm)	3,700
Recommended mowing area	270-540m ²
Grass box capacity	40L
Dimensions (L x W x H)	1,145x465x1,023mm (45"x18-1/4"x40-1/4")
Net weight*	With two BL1815N batteries: 14.5kg (32.0lbs) With two BL1830 or BL1840 batteries: 15.0kg (33.1lbs)

Standard Equipment :

Fast Charger, Battery Cartridge x2, Wrench, Blade

*weight according to EPTA-Procedure 01/2003

Items of standard equipment and specifications may vary by country or area.

The best choices for use in Resorts,
Public Places and Among Residential Areas.



*Powered by Two 18V Li-ion
batteries in series*

Makita Corporation

3-11-8 Sumiyoshi-cho, Anjo, Aichi, 446-8502 Japan

PRINTED IN JAPAN BE-AD