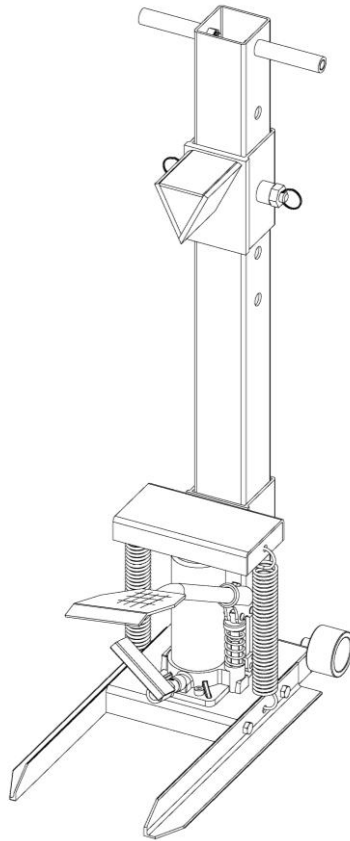




8-Ton Manual Splitter

OWNER'S MANUAL



WARNING:

Read carefully and understand all **ASSEMBLY AND OPERATION INSTRUCTIONS** before operating. Failure to follow the safety rules and other basic safety precautions may result in serious personal injury.

Item# 365398

Thank you very much for choosing a Wel-Bilt™ product. For future reference, please complete the owner's record below:

Model: _____ Purchase Date: _____

Save the receipt, warranty and these instructions. It is important that you read the entire manual to become familiar with this product before you begin using it.

This machine is designed for certain applications only. The distributor cannot be responsible for issues arising from modification. We strongly recommend this machine not be modified and/or used for any application other than that for which it was designed. If you have any questions relative to a particular application, DO NOT use the machine until you have first contacted the distributor to determine if it can or should be performed on the product.

For technical questions please call **1-800-222-5381**.

INTENDED USE

This hydraulic, foot-operated log splitter is designed to split logs quickly and efficiently. Adjustable splitting wedge handles different-sized logs up to 24in.L max.

TECHNICAL SPECIFICATIONS

8-ton capacity
Splits logs up to 23in. long and 14in. diameter
Splitting wedge is adjustable to 5 different heights.
Rolls on solid polypropylene wheels for easy portability.

GENERAL SAFETY RULES



WARNING: Read and understand all instructions. Failure to follow all instructions listed below. The log splitter is only intended to be used to split logs; using the log splitter for any other applications may result in serious injury.



CAUTION: Do not allow persons to operate or assemble this splitter until they have read this manual and have developed a thorough understanding of how the splitter works.



WARNING: The warnings, cautions, and instructions discussed in this instruction manual cannot cover all possible conditions or situations that could occur. It must be understood by the operator that common sense and caution are factors which cannot be built into this product, but must be supplied by the operator.

SAVE THESE INSTRUCTIONS

WORK AREA

- **Keep work area clean**, free of clutter and well lit. Cluttered and dark work areas can cause accidents.
- **Keep children and bystanders** away while operating a splitter. Distractions can cause you to lose control, so visitors should remain at a safe distance from the work area. Keep the area around log splitter clear of any bystanders to prevent injury from ejected wood pieces.
- **Be aware of all power lines, electrical circuits**, water pipes and other mechanical hazards in your work area, particularly those hazards below the work surface hidden from the operator's view that may be unintentionally contacted and may cause personal harm or property damage.
- **Be alert of your surroundings**. Using a splitter in confined work areas may put you dangerously close to cutting tools and rotating parts.

PERSONAL SAFETY

- **Stay alert**, watch what you are doing and use common sense when using a splitter. Do not use a splitter while you are tired or under the influence of drugs, alcohol or medication. A moment of inattention while operating a splitter may result in serious personal injury.
- **Dress properly**. Do not wear loose clothing, dangling objects, or jewelry. Keep your hair, clothing and gloves away from moving parts. Loose clothes, jewelry or long hair can be caught in moving parts.
- **Use safety apparel and equipment**. Log splitters have the tendency to eject small pieces of wood at any moment. To avoid eye injuries, it is strongly recommended users wear safety goggles or safety glasses with side shields which comply with current national standards, or when needed, a face shield. Use as dust mask in dusty work conditions. This applies to all persons in the work area. Also use non-skid safety shoes, hardhat, gloves, dust collection systems, and hearing protection when appropriate.
- **Never place your hands** or other body parts on or near the log, wedge, hydraulic ram, or splitter workbench when splitting the log. Keep hands away from splits and cracks which open in the log. They may close suddenly and cause serious bodily injury.
- Do not use this log splitter for any other purpose other than splitting logs. Do not use this log splitter beyond its 8-ton capacity.
- Never leave the log or splitter under pressure.
- Always clear away wood pieces from the log splitter and the area around it before starting on another log.

SPLITTER USE AND CARE

- **Do not modify the splitter in any way**. Unauthorized modification may impair the function and/or safety and could affect the life of the equipment. There are specific applications for which the splitter was designed.
- **Always check for damaged or worn out parts before using the splitter**. Broken parts will affect the splitter operation. Replace or repair damaged or worn parts immediately.
- **Use the splitter on flat and level surfaces** capable of supporting the splitter and its maximum load. Pulling or pushing a load on a slanted or uneven surface can result in loss of control.

- **Split logs in the direction of its growing grain.** Do not place a log across the workbench; this is dangerous and may damage the splitter.
- **Never split two logs at the same time.** One of them may be ejected and hit you.
- **Store idle splitter.** When splitter is not in use, store it in a secure place out of the reach of children. Inspect it for good working condition prior to storage and before re-use.

FREEING A JAMMED LOG

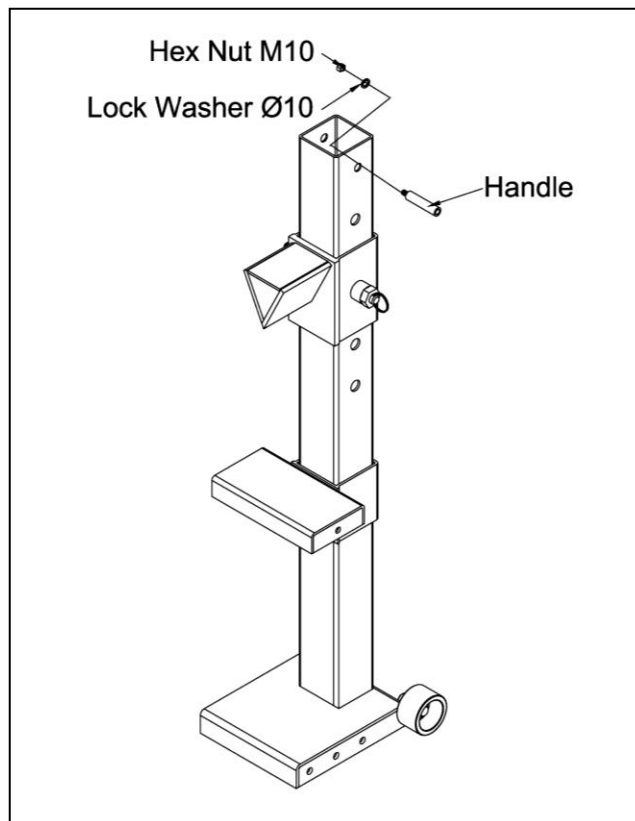
If a log becomes jammed or stuck, follow these steps.

1. Step onto Down Pedal and lower the workbench platform by pushing by hand or applying pressure to the platform.
2. Next, make sure there is **NO** pressure on the jammed log, workbench platform, or splitting wedge.
3. Remove by hand jammed log and any log pieces or debris. If unable to remove by hand, use rubber mallet and hammer to pry jammed log away from wedge or jammed area.
4. Once free, check that all debris and any log pieces are clear before starting to split additional logs.

ASSEMBLY

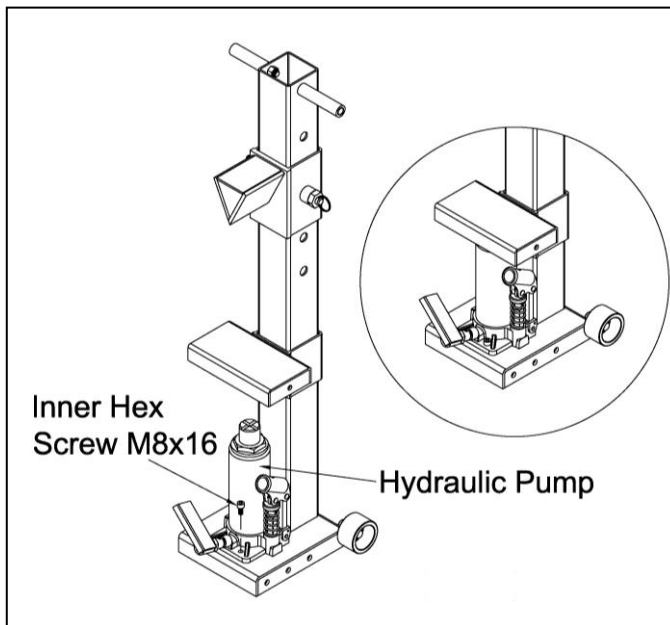
Step 1: Attach handles

Attach handles (part #8) to top of log splitter. One handle per side. Secure each handle using Ø10 lock washer (part #20) and M10 Hex Nut (part #21). Slide Sponge Sleeve (part #9) over handle. Moistening with a small amount of water will make it slide on easier.



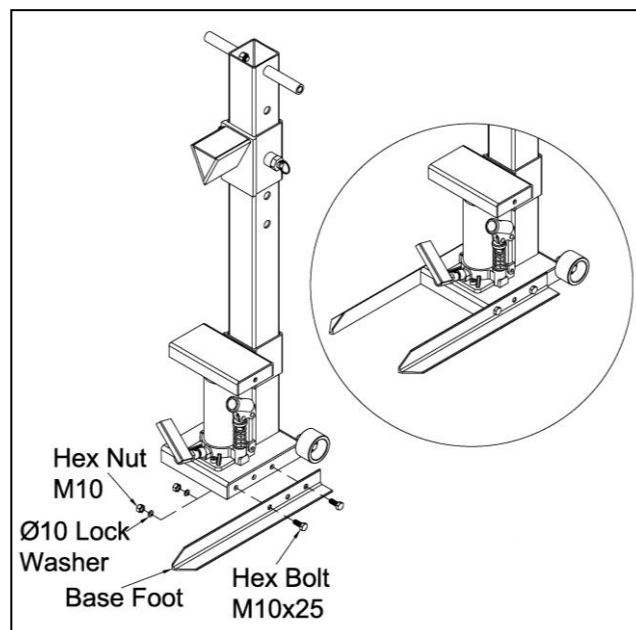
Step 2: Attach hydraulic pump

Assemble the hydraulic pump (part # 12) to base by using two inner hex screws M8x16 (part # 14).
Note please use inner hex wrench to assemble this pump.



Step 3: Attach Base Feet

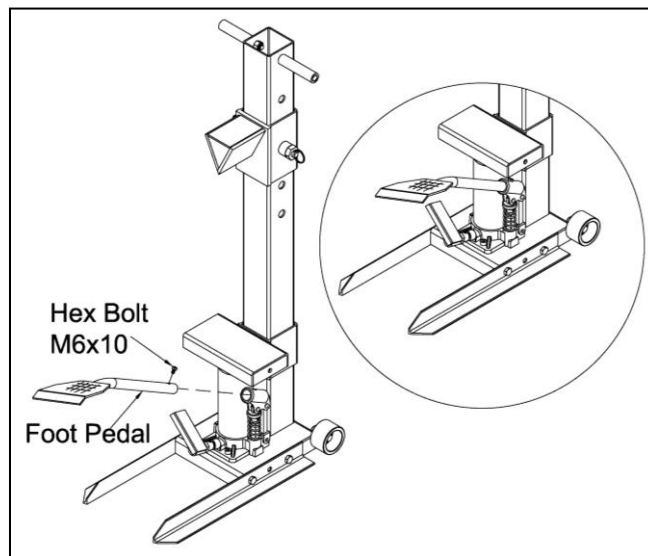
Attach Base Feet (part #22) to bottom of main post near hydraulic pump. One foot per side. Secure each foot using two M10X25 Hex Bolt (part #19) two Ø10 lock washer (part #20) and two M10 Hex Nut (part #21).



NOW POSITION LOG SPLITTER VERTICALLY ONTO FEET

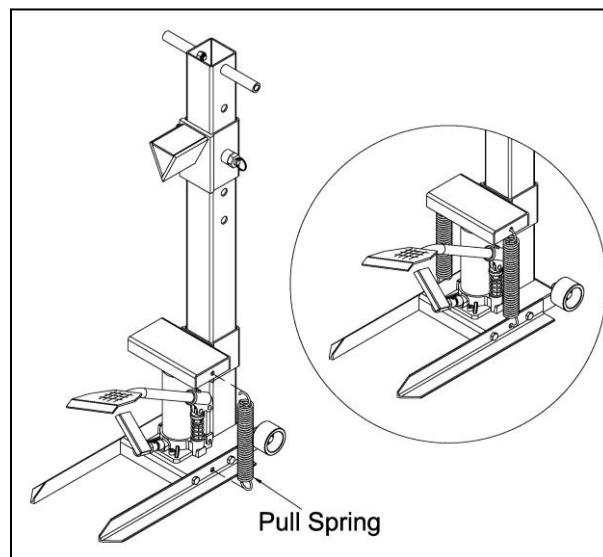
Step 4: Attach Foot Pedal

Insert foot pedal (part #5) into hydraulic pump slot. Tighten hex bolt (part #6) to secure the foot pedal to the hydraulic pump.



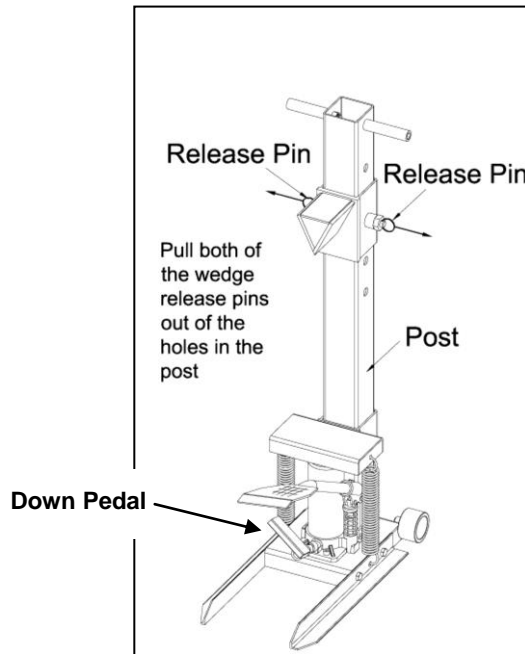
Step 5: Attach Pull Springs

Attach each pull spring (part #13) into center hole of foot leg first. Then attach opposite side to splitter workbench (part #11). Repeat Step 5 for each spring.



OPERATION

1. Cut the logs for splitting to 23 1/4in. or less to fit into the splitter. The wedge can be adjusted to accommodate up to 5 different log lengths (up to 24in. max.).
2. To enable the hydraulic jack ram, pump the foot pedal of the hydraulic pump to raise the splitter workbench.
3. Pull both of the wedge release pins out of the holes in the post, and lower the wedge to a height slightly more than the length of the log.



Note: Make sure the wedge release pins are firmly seated in the post holes before continuing.

4. Place the log securely on the splitter workbench.
5. Keeping the log stable and your hands out of the way of the wedge, use the hydraulic foot pedal to raise the log up tight against the wedge.
6. Keeping your hands away from the log and log splitter, continue with even strokes of the hydraulic foot pedal until the log is split.
7. Remove the wood pieces and clear the area of any debris.
8. To lower the splitter workbench, apply downward pressure to the workbench after releasing the pressure from the hydraulic pump by treading the down pedal that is assembled on the jack.

MAINTENANCE

Maintain your splitter. It is recommended that the general condition of any splitter be examined before it is used. Keep your splitter in good repair by adopting a program of conscientious repair and maintenance. If any abnormal vibrations or noise occurs, have the problem corrected before further use. Have necessary repairs made by qualified service personnel.

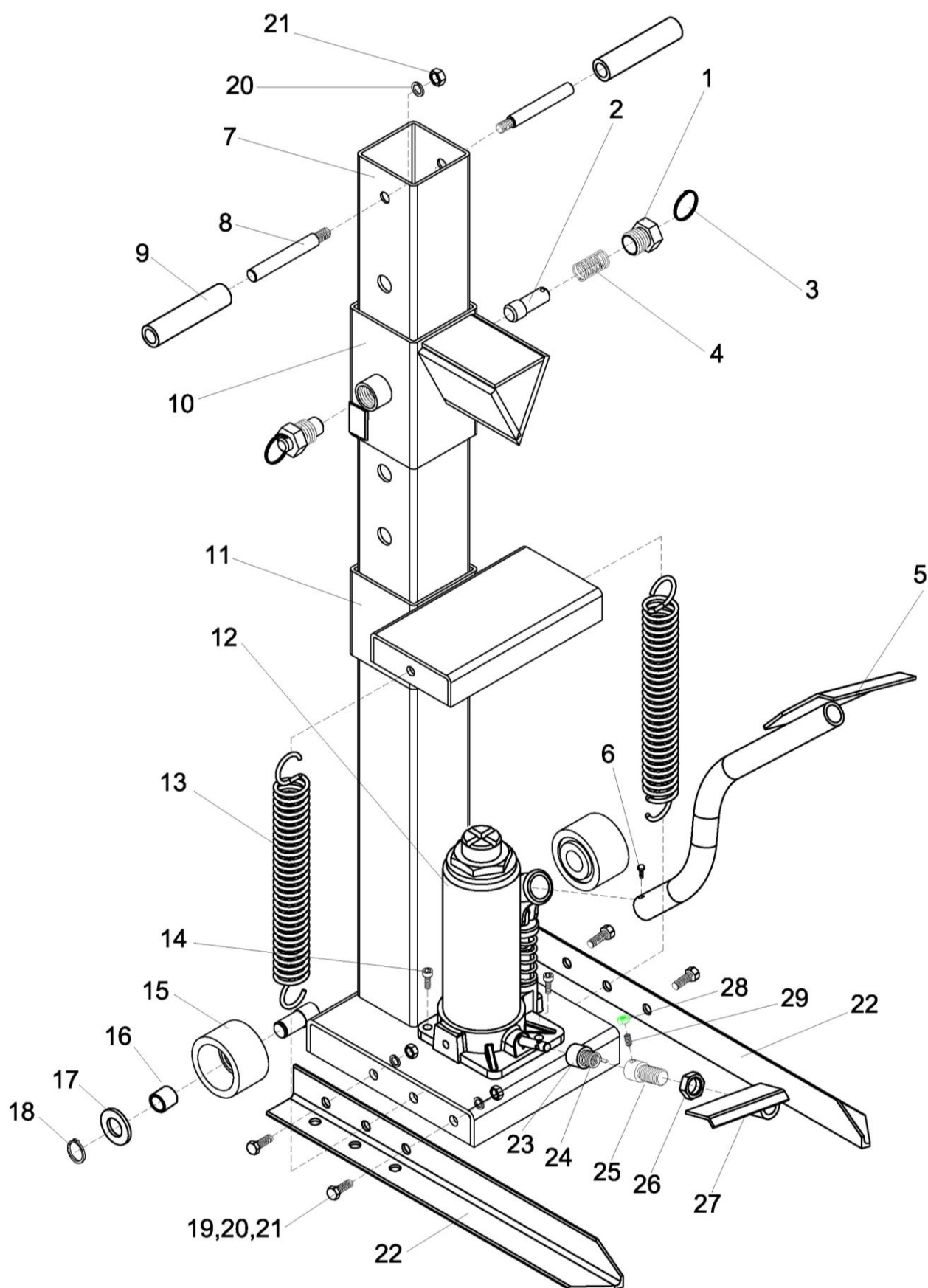
- Store the log splitter in a dry location by treading the release lever to relieve hydraulic pressure.
- Wipe down the log splitter to remove tree sap or dirt after each use. Occasionally, you may need to add hydraulic oil to maximize performance (see below).

To add oil to the hydraulic pump:

Note: *Refer to the Parts Breakdown to identify parts named below.*

1. Remove the pull spring to separate the workbench from hydraulic pump.
2. Use a 6mm inner hex wrench to remove the two cap screws that hold the hydraulic pump to the base.
3. Position the pump horizontally and remove the round rubber oil plug on the back of the pump housing.
4. Add hydraulic oil until the cylinder is approximately 3/4 full. (Oil weight is approximately 0.7kg/1.543lbs)
5. Replace the rubber oil plug and re-assemble the log splitter.

DIAGRAM & PARTS LIST



PART #	DESC	QTY
1	Sleeve With Thread	2
2	Pin	2
3	Ring	2
4	Pressure Spring	2
5	Foot Pedal	1
6	Hex Bolt M6x10	1
7	Beam Frame	1
8	Handle	2
9	Sponge Sleeve	2
10	Wedge Assembly	1
11	Workbench	1
12	Hydraulic Pump	1
13	Pull Spring	2
14	Inside Hex Screw M8x16	2
15	Wheel	2
16	Spacer	2
17	Flat Washer $\Phi 16$	2
18	Back Ring $\Phi 17$	2
19	Hex Bolt M10x25	4
20	Lock Washer $\Phi 10$	6
21	Hex Nut M10	6
22	Angle Foot	2
23	Torsional Spring Sleeve	1
24	Torsional Spring	1
25	Extension Rod	1
26	Thin Nut M16	1
27	Down Pedal	1
28	Hex Nut M6	1
29	Holding Screw M6x12	1

For replacement parts and technical questions, please call **1-800-222-5381**.

WARRANTY

One-year limited warranty



Distributed by
Northern Tool + Equipment Co., Inc.
Burnsville, Minnesota 55306-6936
Made in China