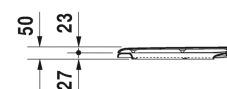
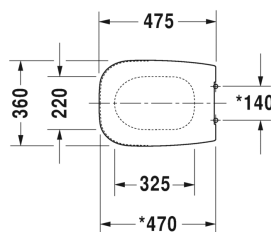


D-Code Toilet seat and cover # 0067410000



Toilet seat and cover	Dimension	Weight	Order number
elongated, hinges stainless steel, without soft closure			
Colors			
00 White Alpin			
Variant			
		2.800 kilogram	0067410000
Suitable products			
One-piece toilet US-version, elongated with syphonic jet action, 305 mm/12" rough-in, vertical outlet, 1,28 gpf (4,8 lpf), 395 x 735 mm	395 x 735 mm		011301
Two-piece toilet (without cistern), US-version, elongated with syphonic jet action, 305 mm/12" rough-in, vertical outlet, 350 x 685 mm	350 x 685 mm		011701
Toilet close-coupled (without cistern), washdown model, Outlet for Vario connector set, for horizontal and vertical outlet, length adjustable from 70 - 180 mm, and vario connecting bend, vertical outlet from 170 - 235 mm, fixings included, EWL class 2, 360 x 695 mm	360 x 695 mm		214209

All drawings contain the necessary measurements which are subject to standard tolerances. They are stated in mm and are non-binding. Exact measurements, in particular for customised installation scenarios, can only be taken from the finished ceramic piece.