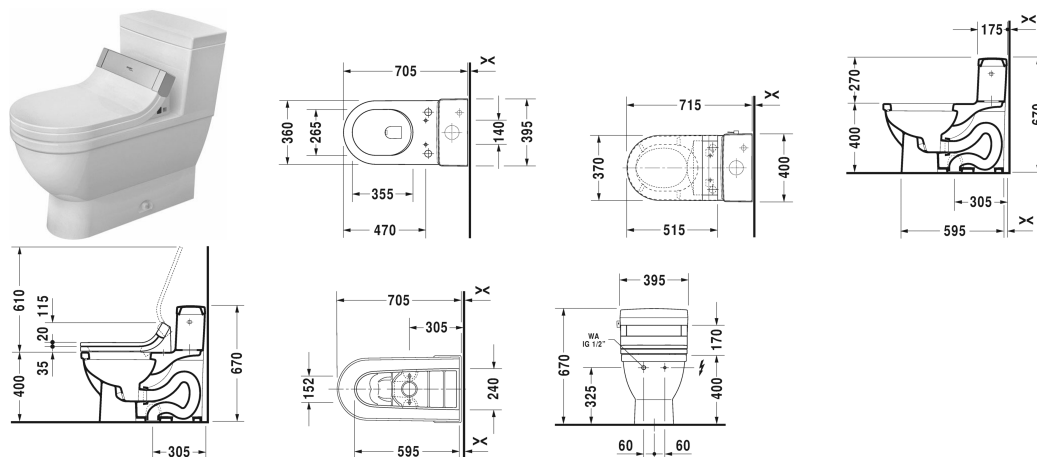


Starck 3 One-piece toilet for SensoWash® # 212051..01

| < 370 mm > |



One-piece toilet for SensoWash®	Dimension	Weight	Order number
US-version, only in combination with SensoWash, elongated with syphonic jet action, 305 mm/12" rough-in, with Single Flush mechanism, with side lever, 3"/80 mm flapper valve, connecting elements for SensoWash with concealed connections included, vertical outlet, 1,28 gpf (4,8 lpf)			
Colors			
00 White Alpin 20 HygieneGlaze (an antibacterial ceramic glaze that provides almost indefinite effectiveness)			
Variant			
●	370 x 715 mm	52.100 kilogram	212051..01
Accessory			
Mounting set for One-piece and Two-piece toilets, Outflow 3/8" - external thread, Wall Connection 1/2" - internal thread, 1/2", US-version		0.480 kilogram	001417
Mounting set for One-piece and Two-piece toilets, 1/2", ASIA-version		0.480 kilogram	001416
Suitable products			
SensoWash® Starck C shower toilet seat for ME by Starck, Starck 2, Starck 3 and Darling New* with concealed connections, Remote control included, Electromotive actuated seat and lid, Rear-, Lady- and Comfortwash, individual adjustment of water-, air- and seat temperature as well as spray wand position and water spray intensity, Self-cleaning spray wand, 2 individually programmable user profiles, Night light, Quick release: easy seat unit removal, on / off-button, 370 x 515 mm	370 x 515 mm		610001

All drawings contain the necessary measurements which are subject to standard tolerances. They are stated in mm and are non-binding.

Starck 3 One-piece toilet for SensoWash® # 212051..01

|< 370 mm >|

Exact measurements, in particular for customised installation scenarios, can only be taken from the finished ceramic piece.