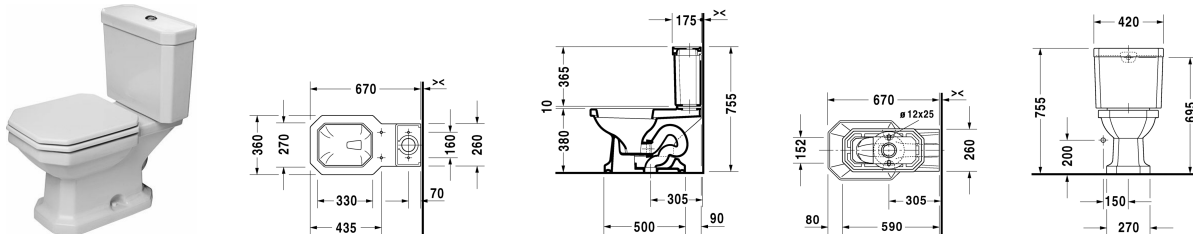


1930 Series Two-piece toilet # 2130010000

| < 360 mm > |



Two-piece toilet	Dimension	Weight	Order number
(without cistern), elongated with syphonic jet action, US-version, 305 mm/12" rough-in, vertical outlet, 1,28 gpf (4,8 lpf)			
Colors			
00 White Alpin			
Variant			
◆	360 x 665 mm	26.000 kilogram	2130010000
Accessory			
Mounting set for One-piece and Two-piece toilets, 1/2", ASIA-version		0.480 kilogram	001418
Mounting set for One-piece and Two-piece toilets, Outflow 3/8" - external thread, Wall Connection 1/2" - internal thread, 1/2", US-version		0.480 kilogram	001431
Suitable products			
Toilet seat and cover octagonal seat hole, hinges stainless steel, without soft closure,			006481
Toilet seat and cover oval seat hole, hinges stainless steel, without soft closure,			006661
Cistern with Single Flush mechanism, chrome, bottom left supply, 1,28 gpf (4,8 lpf), 420 x 175 mm		420 x 175 mm	087230
Toilet seat and cover octagonal seat hole, hinges stainless steel, with soft closure,			006489

All drawings contain the necessary measurements which are subject to standard tolerances. They are stated in mm and are non-binding. Exact measurements, in particular for customised installation scenarios, can only be taken from the finished ceramic piece.