



# Submittal Data Information

101-031

## Model 008 Cartridge Circulator

Effective: May 8, 2009

Supersedes: September 1, 2003

Job: \_\_\_\_\_ Engineer: \_\_\_\_\_ Contractor: \_\_\_\_\_ Rep: \_\_\_\_\_

ITEM NO.	MODEL NO.	IMP. DIA.	G.P.M.	HEAD/FT.	H.P.	ELEC. CHAR.

### Features

- Standard High Capacity Output-Compact Design
- Quiet, Efficient Operation
- Direct Drive-Low Power Consumption
- Unique Replaceable Cartridge Design-Field Serviceable
- Self Lubricating
- No Mechanical Seal
- Unmatched Reliability-Maintenance Free
- Universal Flange to Flange Dimensions
- Cast Iron or Stainless Steel, Flanged or Bronze, Sweat Connections

### Application

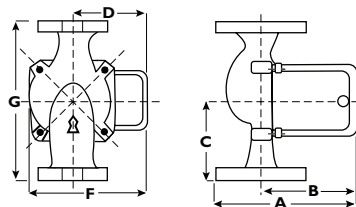
The Taco 008 is designed for a wide range of residential and light commercial higher-head water circulating applications. Typical uses include hydronic heating, radiant in-floor/panel heating and closed-loop solar heating systems. The Stainless Steel or Bronze 008 can be used in higher-head heat recovery, water source heat pump, open-loop solar heat and domestic water recirculation systems. The unique replaceable cartridge contains all of the moving parts and allows for easy service, instead of replacing the entire circulator. Compact, direct-drive, low power consumption design is ideal for high-efficiency jobs.

### Pump Dimensions & Weights

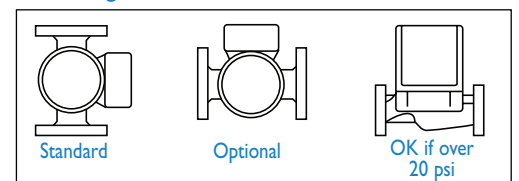
Model	Casing	A		B		C		D		F		G		Ship Wt.	
		in.	mm	in.	mm	in.	mm	in.	mm	in.	mm	in.	mm	lbs.	Kg
008-F6	Cast Iron	6	152	4	102	3-3/16	81	2-15/16	75	4-3/4	121	6-3/8	162	8.0	3.6
008-SF6	St. Steel	6	152	4	102	3-3/16	81	2-15/16	75	4-3/4	121	6-3/8	162	8.0	3.6
008-BC6	Bronze	5-5/8	143	4-9/16	116	3-3/16	81	2-15/16	75	4-3/4	121	6-3/8	162	8.0	3.6

### Materials of Construction

Casing (Volute):	Cast Iron or St. Steel, Flanged Bronze, Sweat
Stator Housing:	Steel
Cartridge:	Stainless Steel
Impeller:	Non-Metallic
Shaft:	Ceramic
Bearings:	Carbon
O-Ring & Gaskets:	EPDM



### Mounting Positions



### Model Nomenclature

- F – Cast Iron, Flanged
  - SF – Stainless Steel, Flanged
  - BC – Bronze, 3/4" Sweat Connections
- Variations:**
- Z – Zoning Circulator
  - J – Bronze Cartridge with Cast Iron Casing

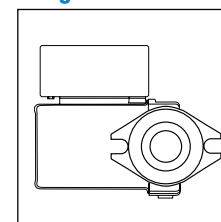
### Electrical Data

Model	Volts	Hz	Ph	Amps	RPM	HP
008-F6	115	60	1	.79	3250	1/25
008-SF6	115	60	1	.84	3250	1/25
008-BC6	115	60	1	.84	3250	1/25

Motor Type: Permanent Split Capacitor  
Impedance Protected

Motor Options: 220/50/1, 220/60/1, 230/60/1, 100/110/50/60/1

### Flange Orientation



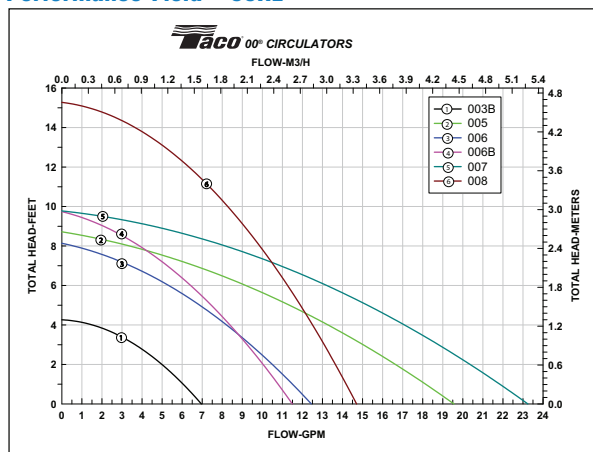
### Performance Data

- Flow Range: 0 – 14 GPM
- Head Range: 0 – 16 Feet
- Minimum Fluid Temperature: 40°F (4°C)
- Maximum Fluid Temperature: 230°F (110°C)
- Maximum Working Pressure: 125 psi
- Connection Sizes: 3/4", 1", 1-1/4", 1-1/2" Flanged, 3/4" Sweat



FOR INDOOR USE ONLY

### Performance Field - 60Hz



Taco, Inc., 1160 Cranston Street, Cranston, RI 02920 | Tel: (401) 942-8000 | FAX: (401) 942-2360

Taco (Canada), Ltd., 8450 Lawson Road, Suite #3, Milton, Ontario L9T 0J8 | Tel: (905) 564-9422 | FAX: (905) 564-9436

Visit our web site: www.TacoComfort.com | Printed in USA | ©2015 Taco, Inc.

