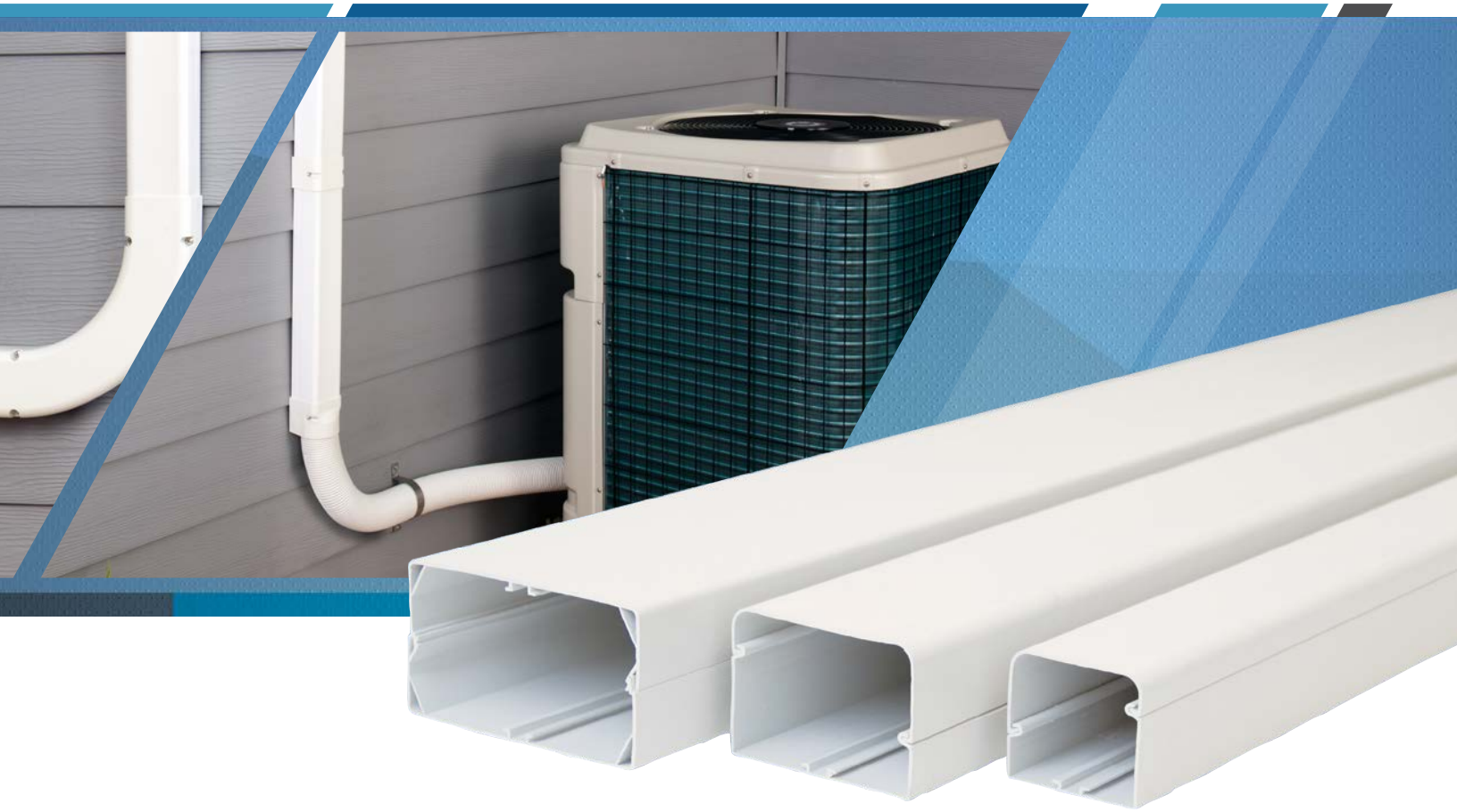


**LittleGIANT®**

# SPEEDI DUCT™ AND HVAC INSTALLATION ACCESSORIES





# SPEEDI DUCT™ AND HVAC INSTALLATION ACCESSORIES CATALOG

- Speedi Duct™ Products ..... 2**
- Speedi Duct™ Benefits ..... 2
- Starter Kit ..... 3
- Starter Kit XL ..... 3
- Flex Hose Kit ..... 4
- Line Set Duct ..... 4
- Components ..... 5
- HVAC Installation Accessories ..... 9**
- Condenser Support ..... 9**
- Base Pad ..... 9
- Mount Block ..... 9
- Mount Block End Cap ..... 9
- Wall Support ..... 10**
- Condenser Bracket ..... 10
- Wall Sleeve ..... 11
- Drain Hose ..... 11
- Drain Hose Y-Connection ..... 11

*Speedi Duct™ and SpinFix™ are trademarks owned by Castel Engineering sa.*

*1/2016 © Castel Engineering sa – Belgium. All pictures and drawings in this literature are for illustration purposes only.  
Data may change without prior notice and are subject to tolerances. Castel Engineering sa, its Affiliates and its Distributors cannot be held liable for typographical errors, layout errors or technical misinformation contained herein.*

For the most up-to-date product information, visit [littlegiant.com](http://littlegiant.com).



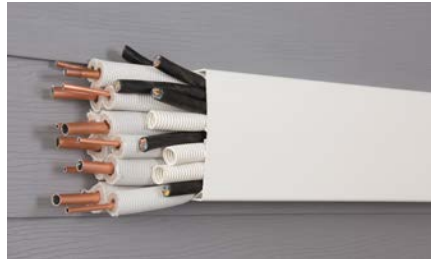
## SPEEDI DUCT™ PRODUCTS

### SPEEDI DUCT™ BENEFITS

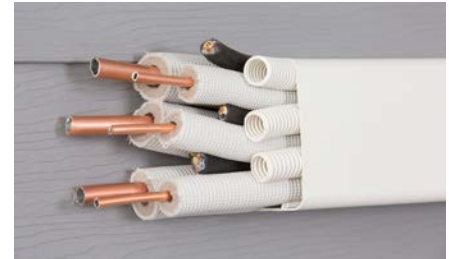
#### AVAILABLE IN THREE SIZES



3" / 70 mm



4" / 105 mm



6" / 150 mm

#### PROTECTS THE LINE SET

- For most installations, the insulated line set and drain hose run along the exterior wall before passing through and connecting to the indoor unit. Line set insulation is particularly vulnerable to deterioration from climatic conditions and UV rays. As a result, the weakened material can be further damaged by birds and insects. Without proper protection, the insulation can be damaged and lose its insulating properties.

#### COST AND ENERGY SAVINGS

- Air conditioning and heat pump equipment does not operate properly when the line set becomes damaged, or when the insulation deteriorates to expose the piping underneath. The results of this damage are higher maintenance costs and a shortened lifespan of the unit. Speedi Duct™ protects the equipment and contributes to extending its life.
- Exposed line sets are less efficient, resulting in a system that uses more energy and costs more to operate. Speedi Duct™ protects line set insulation to maintain correct operating efficiency of the equipment.

#### PAINTABLE

- Speedi Duct™ can be painted to blend with any exterior/interior color palette, making it practically disappear on the wall. *In order to ensure good paint adhesion, it is recommended to follow the paint manufacturer's instructions for painting plastic (PVC, ASA, PP, PE).*

#### DESIGNED FOR BOTH UNITARY AND MINI-SPLIT UNITS

- Speedi Duct™ includes a wide range of fittings that offer the professional installer a solution for the most difficult installation configurations, whether unitary, heat pump, or ductless mini-split equipment.
- The top and bottom sections are assembled with quality stainless steel screws that provide a very rigid and stable installation with no loose-fitting parts that could potentially make noise.
- Other line set duct covers have a rounded bottom that allows dust, insects, and debris from bird nests to accumulate. Speedi Duct™ utilizes a flat bottom, flush-fitting design that protects the line set and improves in-corner fit that eliminates unsightly gaps.

#### 5 STEPS FOR A ONE-MAN JOB



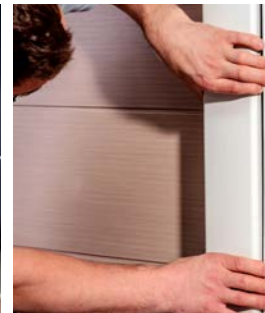
1. Affix the bottom half of the fitting and duct to the wall (screws not included).



2. With a cable tie placed into the SpinFix™, insert and rotate it into the Speedi Duct™ rail.



3. Place the line set, drain hose, and control cable within the duct. Fasten the cable tie.



4. Snap on the top cover



5. Install the top fitting using the included stainless steel screws for a rigid assembly.

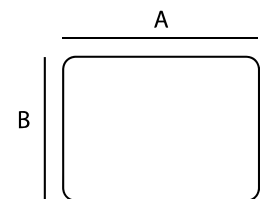
## SPEEDI DUCT™ PRODUCTS

### STARTER KIT

- (3) 4' (1.22 m) Straight Duct
- (1) Duct End
- (1) Wall Cover
- (10) SpinFix™ and Cable Ties
- (2) Unions
- (1) 45° to 90° Adjustable Flat Elbow

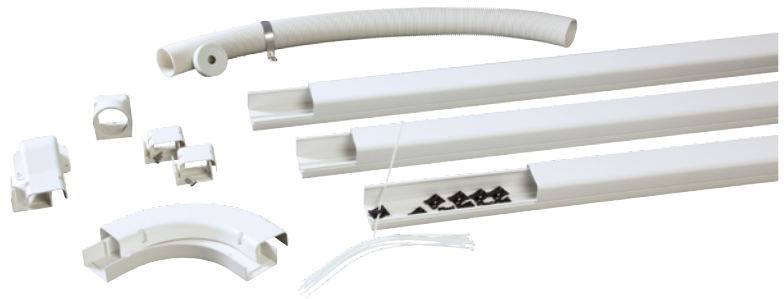


Item No.	Model No.	Size	Color	Dimensions	
				A	B
599600050	D3-IK	3" / 70 mm	Ivory	3" / 70 mm	2.6" / 65 mm
599600350	D3-IKW		White		
599600051	D4-IK	4" / 105 mm	Ivory	4" / 105 mm	3.0" / 75 mm
599600351	D4-IKW		White		

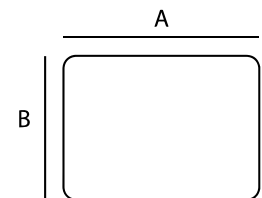


### STARTER KIT XL

- (3) 4' (1.22 m) Line Set Duct
- (1) 39.4" (1 m) Flexible Hose
- (1) Wall Cover
- (1) Flex Hose Connector
- (2) Unions
- (1) End Cap
- (1) 90° Long Flat Elbow
- (1) Stainless Steel Clamp
- (10) SpinFix™ and Cable Ties



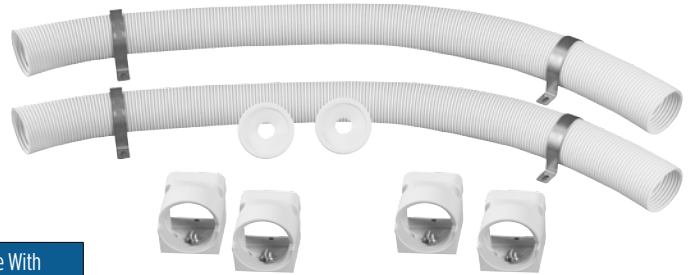
Item No.	Model No.	Size	Color	Dimensions	
				A	B
599600083	D3-IK-XL	3" / 70 mm	Ivory	3" / 70 mm	2.6" / 65 mm
599600383	D3-IKW-XL		White		
599600084	D4-IK-XL	4" / 105 mm	Ivory	4" / 105 mm	3" / 75 mm
599600384	D4-IKW-XL		White		



## SPEEDI DUCT™ PRODUCTS

### FLEX HOSE KIT

- (2) 39" (1 m) Flexible Hose
- (4) 2 Stainless Steel Clamps
- (4) 2 Flexible Hose Connectors
- (2) End Cap



Item No.	Model No.	Color	Designed For Use With
599600052	D3-FHK	Ivory	3" Duct
599600352	D3-FHKW	White	
599600053	D4-FHK	Ivory	4" Duct
599600353	D4-FHKW	White	

### LINE SET DUCT

- Straight line set duct
- Quick and easy installation
- Made of rigid PVC; withstands temperatures -4 to 140 °F (-20 to 60 °C) in static position (using SpinFix™ and cable ties)
- Protects the line set against deterioration due to climatic conditions and helps to reduce energy consumption
- (3) Snap-lock SpinFix™ are included with each 6.5' length (D3-S and D4-S only)



Item No.	Model No.	Size	Color	Dimensions		Length	Qty. (pcs).
				A	B		
599600001	D3-S	3" / 70 mm	Ivory	3" / 70 mm	2.5" / 65 mm	6.5' / 2000 mm	6
599600301	D3-SW		White				
599600002	D4-S	4" / 105 mm	Ivory	4" / 105 mm	3" / 75 mm		6
599600302	D4-SW		White				
599600003	D6-S	6" / 150 mm	Ivory	6" / 150 mm	3.25" / 80 mm	5	
599600303	D6-SW		White				



Starter Kit Installed



XL Kit Installed



Flex Hose Kit Installed



## SPEEDI DUCT™ PRODUCTS

### COMPONENTS

#### SPINFIX™

- Twist-motion locks into mounting rail and is easily repositioned
- SpinFix™ and cable tie keep the line set in place during installation

Item No.	Model No.	Description	Qty. (bag)
599600047	D-SFCT-10	SpinFix™ and Cable Ties	10
599600048	D-SF-50	SpinFix™	50
599600049	D-CT-50	Cable Ties	50



#### WALL COVER

- To cover through-wall opening

Item No.	Model No.	Size	Color	Qty. (pcs.)
599600008	D3-WC	3" / 70 mm	Ivory	10
599600308	D3-WCW		White	
599600009	D4-WC	4" / 105 mm	Ivory	
599600309	D4-WCW		White	
599600010	D6-WC	6" / 150 mm	Ivory	
599600310	D6-WCW		White	



#### UNION

Item No.	Model No.	Size	Color	Qty. (pcs.)
599600026	D3-U	3" / 70 mm	Ivory	10
599600326	D3-UW		White	
599600027	D4-U	4" / 105 mm	Ivory	
599600327	D4-UW		White	
599600028	D6-U	6" / 150 mm	Ivory	
599600328	D6-UW		White	



#### SOFFIT COVER

Item No.	Model No.	Size	Color	Qty. (pcs.)
599600006	D3-SI	3" / 70 mm	Ivory	10
599600306	D3-SIW		White	
599700007	D4-SI	4" / 105 mm	Ivory	
599600307	D4-SIW		White	



#### FLAT ROSETTE

- The unique flat rosette enables the duct to be mounted flush with the wall while covering the opening for the line sets to pass through the ceiling

Item No.	Model No.	Size	Color	Qty. (pcs.)
599600041	D3-FR	3" / 70 mm	Ivory	10
599600341	D3-FRW		White	
599600042	D4-FR	4" / 105 mm	Ivory	
599600342	D4-FRW		White	
599600043	D6-FR	6" / 150 mm	Ivory	
599600343	D6-FRW		White	



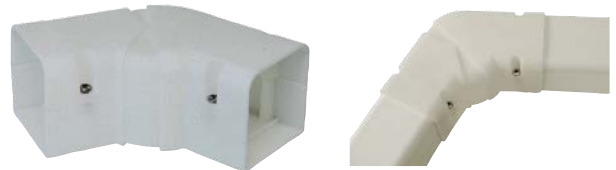
# SPEEDI DUCT™ PRODUCTS

## COMPONENTS

### ADJUSTABLE FLAT ELBOW

- Adjustable between 45° and 90°
- Specific installation situations may require Speedi Duct™ to be connected in various angles; the adjustable flat bend is the flexible solution

Item No.	Model No.	Size	Color	Qty. (pcs.)
599600004	D3-AFB	3" / 70 mm	Ivory	10
599600304	D3-AFBW		White	
599600005	D4-AFB	4" / 105 mm	Ivory	
599600305	D4-AFBW		White	



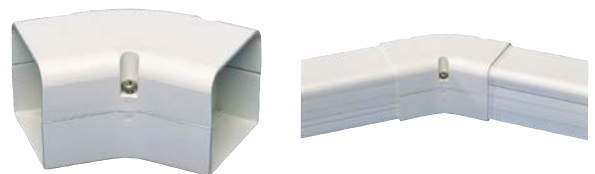
### 90° FLAT BEND ELBOW

Item No.	Model No.	Size	Color	Qty. (pcs.)
599600011	D3-90FB	3" / 70 mm	Ivory	10
599600311	D3-90FBW		White	
599600012	D4-90FB	4" / 105 mm	Ivory	
599600312	D4-90FBW		White	
599600013	D6-90FB	6" / 150 mm	Ivory	
599600313	D6-90FBW		White	



### 45° FLAT BEND ELBOW

Item No.	Model No.	Size	Color	Qty. (pcs.)
599600017	D3-45FB	3" / 70 mm	Ivory	10
599600317	D3-45FBW		White	
599600018	D4-45FB	4" / 105 mm	Ivory	
599600318	D4-45FBW		White	
599600019	D6-45FB	6" / 150 mm	Ivory	
599600319	D6-45FBW		White	



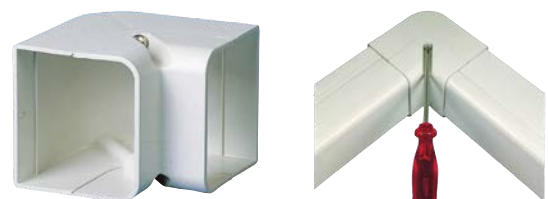
### 90° ELBOW BEND (OUTSIDE CORNER)

Item No.	Model No.	Size	Color	Qty. (pcs.)
599600020	D3-90C	3" / 70 mm	Ivory	10
599600320	D3-90CW		White	
599600021	D4-90C	4" / 105 mm	Ivory	
599600321	D4-90CW		White	
599600022	D6-90C	6" / 150 mm	Ivory	
599600322	D6-90CW		White	



### 90° ELBOW BEND (INSIDE CORNER)

Item No.	Model No.	Size	Color	Qty. (pcs.)
599600023	D3-90IC	3" / 70 mm	Ivory	10
599600323	D3-90ICW		White	
599600024	D4-90IC	4" / 105 mm	Ivory	
599600324	D4-90ICW		White	
599600025	D6-90IC	6" / 150 mm	Ivory	
599600325	D6-90ICW		White	





## SPEEDI DUCT™ PRODUCTS

### COMPONENTS

#### 90° LONG FLAT ELBOW

- Ideal when bending the line set with a wider radius

Item No.	Model No.	Size	Color	Qty. (pcs.)
599600014	D3-LFB	3" / 70 mm	Ivory	10
599600314	D3-LFBW		White	
599600015	D4-LFB	4" / 105 mm	Ivory	
599600315	D4-LFBW		White	
599600016	D6-LFB	6" / 150 mm	Ivory	
599600316	D6-LFBW		White	



#### T-JOINT

- For multi-split systems (reducer joints are required)
- To combine a 3" (70 mm) duct with a 4" (105 mm) duct; to combine a 4" (105 mm) duct with a 6" (150 mm) duct

Item No.	Model No.	Size	Color	Qty. (pcs.)
599600029	D4-TJ	4" / 105 mm	Ivory	10
599600329	D4-TJW		White	
599600030	D6-TJ	6" / 150 mm	Ivory	
599600330	D6-TJW		White	



NOTE: D4-TJ joins D3-S and D4-S (requires D34-RJ); D6-TJ joins D4-S and D6-S (requires D46-RJ)

#### REDUCER JOINT

- To combine with T-Joint

Item No.	Model No.	Size	Color	Qty. (pcs.)
599600033	D34-RJ	3" / 70 mm - 4" / 105 mm	Ivory	10
599600333	D34-RJW		White	
599600034	D46-RJ	4" / 105 mm - 6" / 150 mm	Ivory	
599600334	D46-RJW		White	

NOTE: D34-RJ used with D4-TJ to reduce D4-S and D3-S; D46-RJ used with D6-TJ to reduce D6-S and D4-S

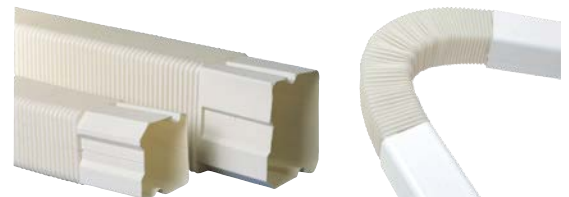


#### FLEX JOINT

- Available in ivory only

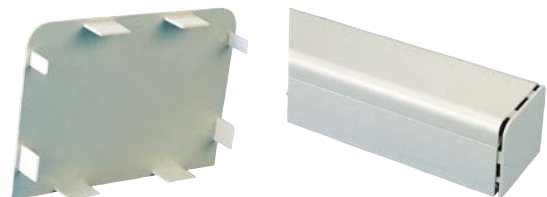
Item No.	Model No.	Size	Color	Qty. (pcs.)
599600031	D3-FJ	3" / 70 mm	Ivory	10
599600032	D4-FJ	4" / 105 mm		

NOTE: The flexible (PE) is paintable in a rigid installed position, but requires specific attention of the paint manufacturer's recommendations for painting on PE plastics



#### DUCT CAP

Item No.	Model No.	Size	Color	Qty. (pcs.)
599600038	D3-C	3" / 70 mm	Ivory	10
599600338	D3-CW		White	
599600039	D4-C	4" / 105 mm	Ivory	
599600339	D4-CW		White	
599600040	D6-C	6" / 150 mm	Ivory	
599600340	D6-CW		White	

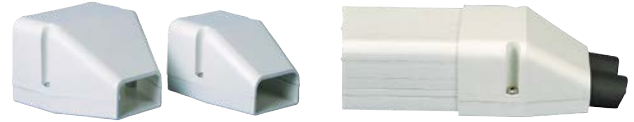


# SPEEDI DUCT™ PRODUCTS

## COMPONENTS

### DUCT END

Item No.	Model No.	Size	Color	Qty. (pcs.)
599600035	D3-E	3" / 70 mm	Ivory	10
599600335	D3-EW	3" / 70 mm	White	
599600036	D4-E	4" / 105 mm	Ivory	
599600336	D4-EW	4" / 105 mm	White	
599600037	D6-E	6" / 150 mm	Ivory	
599600337	D6-EW	6" / 150 mm	White	



### WALL ROSETTE

Item No.	Model No.	Size	Color	Qty. (pcs.)
599600044	D3-WR	3" / 70 mm	Ivory	10
599600344	D3-WRW	3" / 70 mm	White	
599600045	D4-WR	4" / 105 mm	Ivory	
599600345	D4-WRW	4" / 105 mm	White	
599600046	D6-WR	6" / 150 mm	Ivory	
599600346	D6-WRW	6" / 150 mm	White	



## HVAC INSTALLATION ACCESSORIES - CONDENSER SUPPORT

### BASE PAD

- 4" x 4" x 14" (100 x 100 x 355 mm); 4" x 4" x 17" (100 x 100 x 432 mm)
- 220 lbs (100 kg) maximum allowable spread load capacity per item\*
- Mounting bolts and adjusting nuts included
- One set includes two base pads and mounting hardware



Item No.	Model No.	L x H x W	Color	Qty. (sets)
599600085	BP-14	13.8" / 350 mm x 3" / 78 mm x 2.75" / 840 mm	White	6
599600086	BP-18	17.7" / 450 mm x 3" / 78 mm x 2.75" / 840 mm		

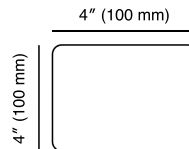
*NOTE: Maximum load weight does not take into account any safety factors*

### MOUNT BLOCK

- 4" x 4" x 14" (100 x 100 x 355 mm); 4" x 4" x 17" (100 x 100 x 432 mm); 4" x 4" x 36" (100 x 100 x 914 mm)
- 1000 lbs (450 kg) maximum allowable spread load capacity per item\*
- Mounting bolts and nuts included
- Shock absorbent
- One set includes two mount blocks and mounting hardware



Item No.	Model No.	Length	Color	Qty. (sets)
599600057	MBW-14	13.8" / 350 mm	White	6
599600058	MBW-17	17.7" / 450 mm		6
599600059	MBW-36	39.4" / 1000 mm		1



*NOTE: Maximum load weight does not take into account any safety factors*

### MOUNT BLOCK END CAP

- 4" x 4" (100 mm x 100 mm)
- End cap for mount block
- Quick and easy installation
- One set includes four pieces



Item No.	Model No.	Size	Color	Qty. (pcs.)
599600060	MBW-C	4" x 4" / 100 x 100 mm	Ivory	4



## HVAC INSTALLATION ACCESSORIES - WALL SUPPORT

### CONDENSER BRACKET

- Quick and easy to install
- Pre-assembled with one screw
- Reinforced two-point assembly
- Bracket arms can be easily adjusted via a unique sliding nut-holder
- Powder coated galvanized steel
- Supplied with crossbar mounting kit, anti-vibration dampers, and adjusters for easy leveling on uneven wall surfaces



Item No.	Model No.	Dimensions			Max. Load Weight (lb / kg)*
		Horizontal	Vertical	Crossbar	
599600061	WB-18	17.75" / 450 mm	15.75" / 400 mm	3' / 960 mm	176 + 176 / 80 + 80*
599600062	WB-21	21" / 530 mm			

*\*It is your responsibility to choose and use the appropriate tools and materials that ensure the final installation is in compliance with all national, state, local, and environmental regulations, and that safety factors are appropriate for your intended application of 176 lb (80 kg) per arm. Maximum load weight does not take into account any safety factors.*

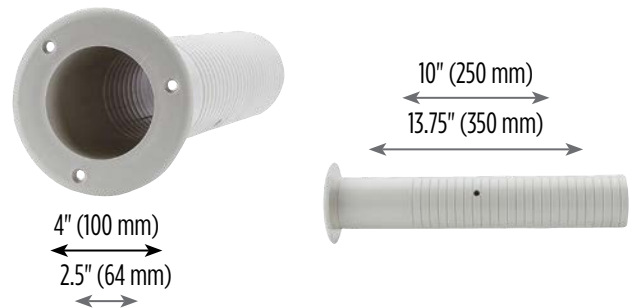


## HVAC INSTALLATION ACCESSORIES - HOSE AND CONNECTIONS

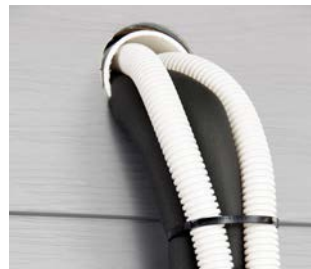
### WALL SLEEVE

- Protects line set insulation, electrical cable, and drain hose from damage during installation and afterward
- The collar covers indoor opening imperfections
- Cut to adjust to wall thickness, between 4" (100 mm) and 13.78" (350 mm)
- The hole should be made with a 2-1/2" (64 mm) hole saw

Item No.	Model No.	Qty. (pcs.)
599600054	D-WS	10



*Without a wall sleeve, the insulation and drain hose is easily damaged*



*Wall sleeve and drain hose correctly installed*

### DRAIN HOSE

- Standard ivory color
- Hose length 164' (50 m)
- Regular cut-marks
- Connects to 5/8" (16 mm), 11/16" (18 mm), and 3/4" (20 mm) systems

Model No.	Item No.	Connections	Color	Qty. (roll)
DH-1	599600065	5/8" - 11/16" - 3/4" / 16 mm - 18 mm - 20 mm	Ivory	1



### DRAIN HOSE Y-CONNECTION

- Connects two DH-1 drain hoses into one
- Useful in multi-split installations

Model No.	Item No.	Dimensions		Color	Qty. (roll)
		Top	Bottom		
DHC-Y	599600066	5/8" - 11/16" - 3/4" / 16 mm - 18 mm - 20 mm	5/8" / 16 mm	Ivory	20











# Little GIANT®