

MULTI21⁺

HIGH EFFICIENCY
MULTI-ROOM
DUCTLESS SYSTEMS



Multi Zone Inverter Heat Pump

High Efficiency Multi 21+ heat pump units can heat and cool up to 5 zones without distribution boxes. Each Multi 21+ is powered by Gree's energy efficient G10 inverter and a variable speed compressor. Our G10 inverter technology saves energy, reduces outdoor noise and keeps room temperature consistent by eliminating the harsh starts & stops of conventional systems. Each outdoor coil has a corrosion resistant Gold Fin coating to promote energy efficiency.



Features and Benefits:

- High Efficiency up to 22 SEER
- Sound Levels down to 56 dB(A)
- Up to 5 indoor units
- Multi-point Diagnostics
- Low Ambient Cooling down to 0° F
- Low Ambient Heating down to -4° F
- Intelligent Defrost
- Heavy Gauge Steel Cabinet
- Includes Line-set Adaptors

MODELS		MULTI18HP230V1CO	MULTI24HP230V1CO	MULTI30HP230V1CO	MULTI36HP230V1CO	MULTI42HP230V1CO
Number of Zones		2	2 - 3	2 - 4	2 - 5	2 - 5
SYSTEM PERFORMANCE - NON-DUCTED INDOOR UNITS						
Cooling Capacity (min-max)	Btu/h	18,000 (7,000-21,000)	24,000 (7,500-33,000)	28,400 (8,189-33,438)	34,000 (8,871-35,826)	39,000 (8,871-40,944)
SEER/EER*		22/12.5	21/12.5	21/12.5	21/12.5	21/10.4
Heating Capacity (min-max)	Btu/h	19,000 (8,530-22,600)	24,000 (7,500-35,000)	30,000 (8,189-32,414)	42,500 (8,871-44,356)	45,000 (8,871-46,062)
HSPF/COP		11.0/3.7	11.0/3.7	11.5/3.7	11.5/3.7	10.2/3.6
Energy Star®		Yes	Yes	Yes	Yes	NO
SYSTEM PERFORMANCE - SLIM DUCTED INDOOR UNITS						
Cooling Capacity (min-max)	Btu/h	18,000 (7,000-21,000)	24,000 (7,500-33,000)	28,400 (6,200-30,800)	34,000 (13,400-37,000)	39,500 (13,800-42,800)
SEER/EER		16.0/11.5	16.0/10.5	16.0/10.5	16.0/11.5	14.7/9.8
Heating Capacity (min-max)	Btu/h	19,000 (8,530-22,600)	26,000 (7,500-35,000)	30,000 (6,500-32,500)	42,500 (7,231-44,745)	46,500 (7,500-47,000)
HSPF/COP		8.5/3.1	8.5/3.2	8.5/3.3	8.5/3.0	9.6/3.1
OUTDOOR UNIT						
Compressor Type		DC INVERTER DRIVEN ROTARY				
Sound Level	dB(A)	56	59	59	61	61
Cooling Temperature Range	°F	0 - 118°F	0 - 118°F	0 - 118°F	0 - 118°F	0 - 118°F
Heating Temperature Range	°F	-4 - 75°F	-4 - 75°F	-4 - 75°F	-4 - 75°F	-4 - 75°F
Unit Dimension (WxHxD)	in	38.0 x 27.6 x 15.6	38.6 x 31.1 x 17.3	38.4 x 31.0 x 17.3	42.5 x 43.4 x 17.3	42.5 x 43.4 x 17.3
Package Dimension (WxHxD)	in	40.4 x 28.9 x 17.9	42.5 x 33.1 x 19.1	42.5 x 33.1 x 19.1	45.5 x 43.9 x 18.9	45.5 x 43.9 x 18.9
Weight (Net/Gross)	lbs	114.4/124.3	152.9/163.9	154.0/169.4	198.0/215.6	198.0/216.0
Refrigerant Charge - R410A	oz	56.4	77.6	98.8	128.8	128.8
Coil Type		Copper / Aluminum with GOLD FIN Coating				
INSTALLATION						
Line Set Size (Liquid - Gas)	Port A	in	1/4 - 3/8	1/4 - 3/8	1/4 - 3/8	1/4 - 3/8
	Port B	in	1/4 - 3/8	1/4 - 3/8	1/4 - 3/8	1/4 - 3/8
	Port C	in		1/4 - 3/8	1/4 - 3/8	1/4 - 3/8
	Port D	in			1/4 - 3/8	1/4 - 3/8
	Port E	in				1/4 - 3/8
Pre-Charge Length	ft	33	98	131	131	131
Total Piping Length	ft	65	197	230	246	246
Length to farthest Indoor Unit	ft	33	65	82	82	82
Elevation (OD above IDU)	ft	33	33	49	49	49
ELECTRICAL						
Voltage / Phase / Hertz		208-230V /1/ 60Hz	208-230V /1/ 60Hz	208-230V /1/ 60Hz	208-230V /1/ 60Hz	208-230V /1/ 60Hz
MCA	amp	16	23	20	23	24
MOCP	amp	25	30	30	35	40
Interconnecting Wire		AWG14 / 4	AWG14 / 4	AWG14 / 4	AWG14 / 4	AWG14 / 4
Limited Warranty		5 Years on Parts				



Exclude 42K size

Ceiling Cassette

Gree's Ceiling Cassette will inconspicuously provide quiet performance through innovative design. The Ceiling Cassette is extremely suitable for any room, and can be easily installed in suspended ceilings with only a discreet decorative discharge grille visible.



Features and Benefits:

- 4-Way Discharge Air
- Multi Fan Speeds
- Swing Louver
- Power Failure Recovery
- Internal Condensate Drain Pump
- Sentry Float Switch
- Decorative Discharge Air Grille (sold separately)
- Fresh Air Intake (24K model only)
- IR Remote and XK - 19 Wired Controllers

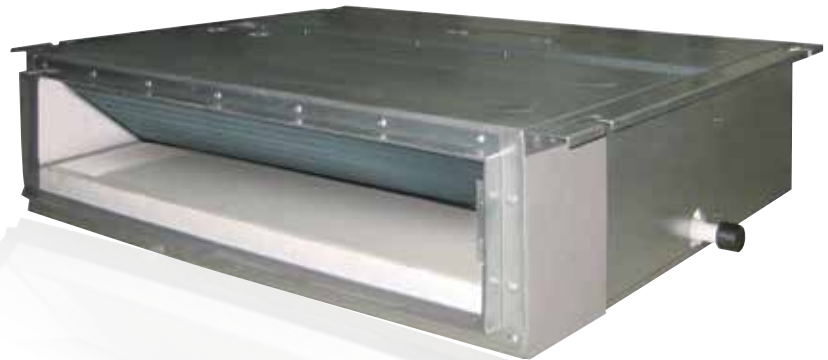
MODELS		CAS12HP230V1AC	CAS18HP230V1AC	CAS24HP230V1AC
Cooling Capacity (Nominal)*	Btu/h	12,000	14,400	22,800
Heating Capacity (Nominal)*	Btu/h	13,000	16,000	27,400
Airflow (max)	CFM	353	353	694
Sound Level (min-max)	dB(A)	42-46	42-46	45-49
Dehumidification	pt/hr	3.0	3.8	5.3
Cabinet Dimensions (WxHxD)	in	22.4 x 9.1 x 22.4	22.4 x 9.1 x 22.4	33.1 x 10.2 x 33.1
Line Set Size (Liquid - Gas)	in	1/4 - 3/8	1/4 - 1/2	3/8 - 5/8
Limited Warranty		5 Years on Parts		

Cassette Discharge Grilles

PART NUMBERS		CASGRILLE1SM	CASGRILLE1SM	CASGRILLE1LG
Grille Dimensions (WxHxD)	in	25.6 x 2.0 x 25.6	25.6 x 2.0 x 25.6	37.4 x 2.4 x 37.4

Slim Duct

Compact and powerful, the Gree concealed duct indoor units offer the ultimate in flexibility and discretion. These slim indoor units are designed to be concealed above suspended ceilings or within open closet spaces to deliver conditioned air via ducting and suitable ceiling or wall grilles.



Features and Benefits:

- Medium Static Pressure Capability
- Slim Line Construction 7-7/8" high
- Alternate Return Air From Bottom Or Rear
- Internal Condensate Pump
- Sentry Float Switch
- IR Remote and XK-19 Wired Controllers

MODELS		DUCT09HP230V1AD	DUCT12HP230V1AD	DUCT18HP230V1AD	DUCT24HP230V1AD
Cooling Capacity (Nominal)*	Btu/h	8,500	11,900	15,300	23,800
Heating Capacity (Nominal)*	Btu/h	9,500	13,100	18,700	27,400
Airflow (max)	CFM	147/265	177/324	294/412	324/589
Sound Level (min-max)	dB(A)	31/37	32/39	33/41	34/42
Dehumidification	pt/hr	1.7	3.0	3.8	5.3
Unit Dimensions (WxHxD)	in	27.6 x 7.9 x 24.2	27.6 x 7.9 x 24.2	35.4 x 7.9 x 24.2	43.3 x 7.9 x 24.2
Line Set Size (Liquid - Gas)	in	1/4 - 3/8	1/4 - 3/8	1/4 - 1/2	3/8 - 5/8
Limited Warranty		5 Years on Parts			

* Min / Max high wall capacities will be determined by the Outdoor unit's capacities if diversity factors are not applicable. Capacities for each high wall zone will be 10% higher Min capacity and 10% lower Max capacity than the 1 to 1 system capacities listed here.

Universal Floor/ Ceiling

Our Universal Floor/Ceiling indoor units are designed to be suspended from a ceiling or mounted low on a wall. The slender and lightweight design is perfect for restaurants or hallways where wall space is limited.



Features and Benefits:

- 4-Way Discharge Air
- Multi Fan Speeds
- Comfortable Sleep Mode
- Swing Louver
- Cleanable Air Filter
- Remote Control Lockout
- Power Failure Recovery
- IR Remote and XK -19 Wired Controller

MODELS		FLR09HP230V1AF	FLR12HP230V1AF	FLR18HP230V1AF	FLR24HP230V1AF
Cooling Capacity (Nominal)*	Btu/h	8,500	11,900	17,000	22,800
Heating Capacity (Nominal)*	Btu/h	9,500	13,100	18,700	27,400
Airflow (max)	CFM	265/383	265/383	294/559	412/736
Sound Level (min-max)	dB(A)	36/40	36/40	40/45	44/48
Dehumidification	pt/hr	1.7	3.0	3.8	5.3
Unit Dimensions (WxHxD)	in	48.0 x 27.6 x 8.9	48.0 x 27.6 x 8.9	48.0 x 27.6 x 8.9	48.0 x 27.6 x 8.9
Line Set Size (Liquid - Gas)	in	1/4 - 3/8	1/4 - 3/8	1/4 - 1/2	3/8 - 5/8
Limited Warranty		5 Years on Parts			

Mini Floor Console

Gree's Mini Console indoor units are aesthetically pleasing and the perfect size for any room. It can be mounted as low as six inches above the floor and has front panel access to the filter for ease of cleaning.



Features and Benefits:

- 4-Way Discharge Air
- Multi Fan Speeds
- Comfortable Sleep Mode
- Swing Louver
- Whisper quiet down to 25 dB(A)
- Cleanable Air Filter
- XFAN Mode for Anti-Mildew Protection
- IR Remote Control

MODELS		CONS09HP230V1AF	CONS12HP230V1AF	CONS18HP230V1AF
Cooling Capacity (Nominal)*	Btu/h	9,000	12,000	18,000
Heating Capacity (Nominal)*	Btu/h	9,500	13,000	19,800
Airflow (max)	CFM	188/382	206/441	241/494
Sound Level (min-max)	dB(A)	25/40	27/43	33/48
Dehumidification	pt/hr	1.7	3.0	3.8
Unit Dimensions (WxHxD)	in	27.6 x 23.6 x 8.5	27.6 x 23.6 x 8.5	27.6 x 23.6 x 8.5
Line Set Size (Liquid - Gas)	in	1/4 - 3/8	1/4 - 3/8	1/4 - 1/2
Limited Warranty		5 Years on Parts		

* Min / Max high wall capacities will be determined by the Outdoor unit's capacities if diversity factors are not applicable. Capacities for each high wall zone will be 10% higher Min capacity and 10% lower Max capacity than the 1 to 1 system capacities listed here.

Tech Series Wall Mount



Crown+, the smart ductless high wall unit. Slim compact design hangs inconspicuously on the wall and mixes well with most interior designs.

Built-in WIFI technology allows direct local control from Smartphones with the Gree+ smart app.

CROWN+



Features and Benefits:

- Universal WIFI
- Smart Phone Interface
- Whisper Quiet down to 22 dB(A)
- Stainless Platinum Finish
- 7 Fan Speeds - from Mute to Turbo
- 180° Multi-Directional Airflow
- 4-Way Adjustable Swing Louvers
- I-FEEL Temperature Control

MODELS		CROWN09HP230V1BH	CROWN012HP230V1BH	CROWN18HP230V1BH
Cooling Capacity (Nominal)*	Btu/h	9,000	12,000	18,000
Heating Capacity (Nominal)*	Btu/h	9,000	13,000	19,000
Air flow (min-max)	CFM	206 - 412	265 - 471	324 - 530
Sound Level (min-max)	dB(A)	22 - 41	23 - 42	26 - 48
Dehumidification	pt/hr	1.7	3.0	3.8
Unit Dimension (WxHxD)	in	37.8 x 12.6 x 8.1	37.8 x 12.6 x 8.1	37.8 x 12.6 x 8.1
Line Set Size (Liquid - Gas)	in	1/4 - 1/2	1/4 - 1/2	1/4 - 5/8
Limited Warranty		5 Years on Parts		

Connoisseur Wall Mount



Vireo+ ductless wall mount has a compact design that blends well with any decor. The perfect option for your home or office needs.

Features and Benefits:

- Four Fan Speeds
- Vertical Adjustable Swing Louvers
- Turbo Mode
- Universal WIFI (Optional)
- Power Failure Recovery
- XFAN Mode for Anti-Mildew Protection
- IR Remote Controller
- XK-41 Wired Controller (Optional)



*Universal WIFI Kits Part No. WSBE02 (sold separately)

MODELS		VIR09HP230V1BH	VIR12HP230V1BH	VIR18HP230V1BH	VIR24HP230V1BH
Cooling Capacity (Nominal)*	Btu/h	9,000	12,000	18,000	22,000
Heating Capacity (Nominal)*	Btu/h	11,000	13,000	19,800	23,000
Air flow (min-max)	CFM	171-377	171-400	335-559	530-706
Sound Level (min-max)	dB(A)	29-43	29-45	39-47	36-48
Dehumidification	pt/hr	1.7	3.0	3.8	4.2
Unit Dimension (WxHxD)	in	33.4 x 11.4 x 8.2	33.4 x 11.4 x 8.2	38.2 x 11.8 x 8.8	42.4 x 12.8 x 9.7
Line Set Size (Liquid - Gas)	in	1/4 - 3/8	1/4 - 1/2	1/4 - 5/8	1/4 - 5/8
Limited Warranty		5 Years on Parts			

* Min / Max high wall capacities will be determined by the Outdoor unit's capacities if diversity factors are not applicable. Capacities for each high wall zone will be 10% higher Min capacity and 10% lower Max capacity than the 1 to 1 system capacities listed here.

Premier Wall Mount

Sleek and contemporary in appearance, the Terra easily blends in with its surroundings. Our state-of-the-art Photocatalytic Filter improves air quality by eliminating up to 99.9% of bacteria and viruses.



TERRA



(optional)

Features and Benefits:

- 7 Fan Speeds - from Mute to Turbo
- Waterfall Heating
- Large LED Display
- I-FEEL Temperature Control
- 4-Way Adjustable Swing Louvers
- XFAN Mode for Anti-Mildew Protection
- Photocatalytic Filter
- XK-41 Wired Controller (Optional)

MODELS		TERRA09HP230V1AH	TERRA12HP230V1AH	TERRA18HP230V1BH	TERRA24HP230V1BH
Cooling Capacity (Nominal)*	Btu/h	9,000	12,000	18,000	24,000
Heating Capacity (Nominal)*	Btu/h	9,800	13,000	25,000	25,000
Air flow (min-max)	CFM	118 - 418	118 - 453	282 - 559	294 - 647
Sound Level (min-max)	dB(A)	23 - 42	24 - 44	33 - 51	38 - 52
Dehumidification	pt/hr	1.9	3.0	3.8	5.3
Unit Dimension (WxHxD)	in	34.1 x 11.5 x 8.2	34.1 x 11.5 x 8.2	40.1 x 12.6 x 9.1	46.4 x 12.8 x 10.4
Line Set Size (Liquid - Gas)	in	1/4 - 1/2	1/4 - 1/2	1/4 - 5/8	1/4 - 5/8
Limited Warranty		5 Years on Parts			

Comfort Wall Mount



Livo+ ductless high wall has a compact design, for quiet comfort and attractive appearance. You can count on consistent comfort from Livo+.



Features and Benefits:

- Multiple Fan Speeds
- Vertical Adjustable Swing Louvers
- Backlight Display
- Comfortable Sleep Mode
- Selectable Dry Mode
- Programmable Timer
- Control Lock
- XK-41 Wired Controller (Optional)

LIVO+



(optional)

(optional*)

*Universal WiFi Kits Part No. WSBEC02 (sold separately)

MODELS		LIVS09HP230V1BH	LIVS12HP230V1BH	LIVS18HP230V1BH	LIVS24HP230V1BH
Cooling Capacity (Nominal)*	Btu/h	9,000	12,000	18,000	22,000
Heating Capacity (Nominal)*	Btu/h	9,500	13,000	19,000	23,000
Air flow (min-max)	CFM	171-318	194-400	282-471	530-706
Sound Level (min-max)	dB(A)	28-43	29-45	35-46	36-48
Dehumidification	pt/hr	1.7	3.0	3.8	5.3
Unit Dimension (WxHxD)	in	31.1 x 10.8 x 7.9	33.3 x 11.4 x 8.3	38.2 x 11.8 x 8.8	42.4 x 12.8 x 9.7
Line Set Size (Liquid - Gas)	in	1/4 - 3/8	1/4 - 3/8	1/4 - 1/2	1/4 - 5/8
Limited Warranty		5 Years on Parts			

* Min / Max high wall capacities will be determined by the Outdoor unit's capacities if diversity factors are not applicable. Capacities for each high wall zone will be 10% higher Min capacity and 10% lower Max capacity than the 1 to 1 system capacities listed here.



Matching combinations and capacities:

MULTI18HP230V1CO 2 COMBINATIONS

TWO UNITS
9 + 9
9 + 12

MULTI24HP230V1CO 11 COMBINATIONS

TWO UNITS		THREE UNITS	
9 + 9	12 + 12	9 + 9 + 9	9 + 12 + 12
9 + 12	12 + 18	9 + 9 + 12	12 + 12 + 12
9 + 18	18 + 18	9 + 9 + 18	

MULTI30HP230V1CO 20 COMBINATIONS

TWO UNITS		THREE UNITS		FOUR UNITS
9 + 9	12 + 18	9 + 9 + 9	9 + 12 + 12	9 + 9 + 9 + 9
9 + 12	12 + 24	9 + 9 + 12	9 + 12 + 18	9 + 9 + 9 + 12
9 + 18	18 + 18	9 + 9 + 18	12 + 12 + 12	9 + 9 + 12 + 12
9 + 24	18 + 24	9 + 9 + 24	12 + 12 + 18	
12 + 12				

MULTI36HP230V1CO 31 COMBINATIONS

TWO UNITS		THREE UNITS		FOUR UNITS	FIVE UNITS
9 + 9	12 + 18	9 + 9 + 9	9 + 12 + 24	9 + 9 + 9 + 9	9 + 9 + 9 + 9 + 9
9 + 12	12 + 24	9 + 9 + 12	9 + 18 + 18	9 + 9 + 9 + 12	9 + 9 + 9 + 9 + 12
9 + 18	18 + 18	9 + 9 + 18	12 + 12 + 12	9 + 9 + 9 + 18	
9 + 24	18 + 24	9 + 9 + 24	12 + 12 + 18	9 + 9 + 12 + 12	
12 + 12	24 + 24	9 + 12 + 12	12 + 12 + 24	9 + 9 + 12 + 18	
		9 + 12 + 18	12 + 18 + 18	9 + 12 + 12 + 12	
				12 + 12 + 12 + 12	

MULTI42HP230V1CO 32 COMBINATIONS

TWO UNITS		THREE UNITS		FOUR UNITS	FIVE UNITS
9 + 9	12 + 18	9 + 9 + 9	9 + 12 + 24	9 + 9 + 9 + 9	9 + 9 + 9 + 9 + 9
9 + 12	12 + 24	9 + 9 + 12	9 + 18 + 18	9 + 9 + 9 + 12	9 + 9 + 9 + 9 + 12
9 + 18	18 + 18	9 + 9 + 18	12 + 12 + 12	9 + 9 + 9 + 18	
9 + 24	18 + 24	9 + 9 + 24	12 + 12 + 18	9 + 9 + 12 + 12	
12 + 12	24 + 24	9 + 12 + 12	12 + 12 + 24	9 + 9 + 12 + 18	
		9 + 12 + 18	12 + 18 + 18	9 + 12 + 12 + 12	
				9 + 12 + 12 + 18	
				12 + 12 + 12 + 12	

Note: It is critical to size the outdoor unit for the entire building load and each indoor unit for its individual zone load.
Min / Max capacity of any approved matched system will be limited to the outdoor unit capabilities.



A company founded on quality and value

GREE Electric Appliances, Inc. is the world's largest specialized air conditioner manufacturer, selling more than 100 million units in over 100 countries since 1991. The GREE brand is world-renowned for engineering 7,000 different models in 20 product categories, developing 3,000 worldwide technical patents and pioneering the Variable Refrigerant Flow system that has revolutionized modern day comfort.

GREE prides itself on the reliability and quality of its products. World class, state-of-the-art quality control methods are employed throughout the manufacturing process, including the use of a separate plant where all key components are pre-tested. More than 1,000 Research & Development technicians spend each day pursuing new and innovative designs as a commitment to ensuring customers always receive the highest quality for the best value in the world.

Specifications are subject to change without notice. Manufacturer reserves the right to discontinue or change at any time, specifications or designs without notice or without incurring obligations.



SCAN TO LEARN MORE ABOUT
GREE PRODUCTS OR VISIT US AT
GREETCOMFORT.COM