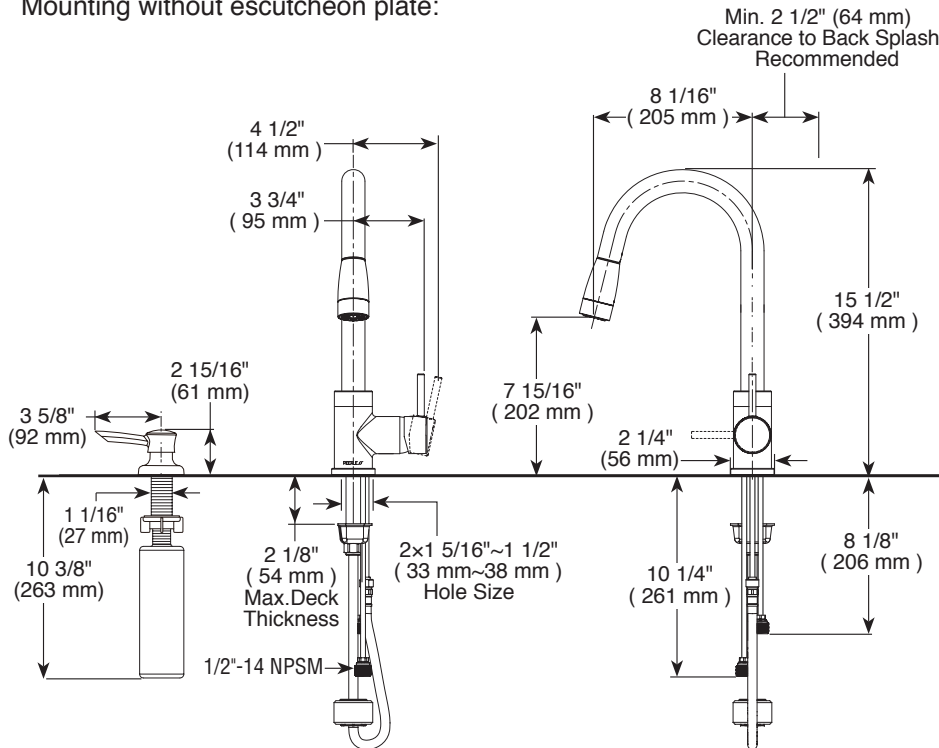


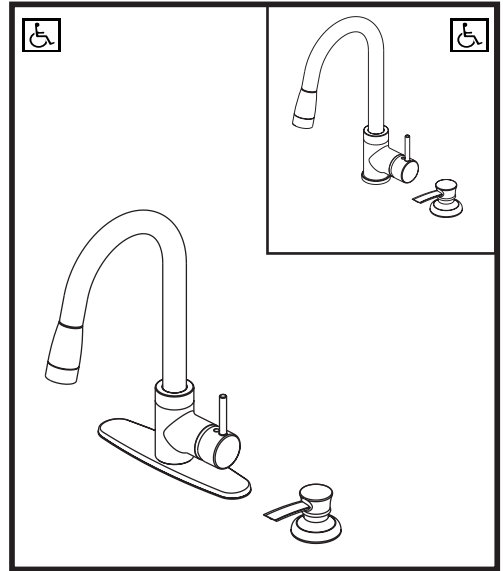
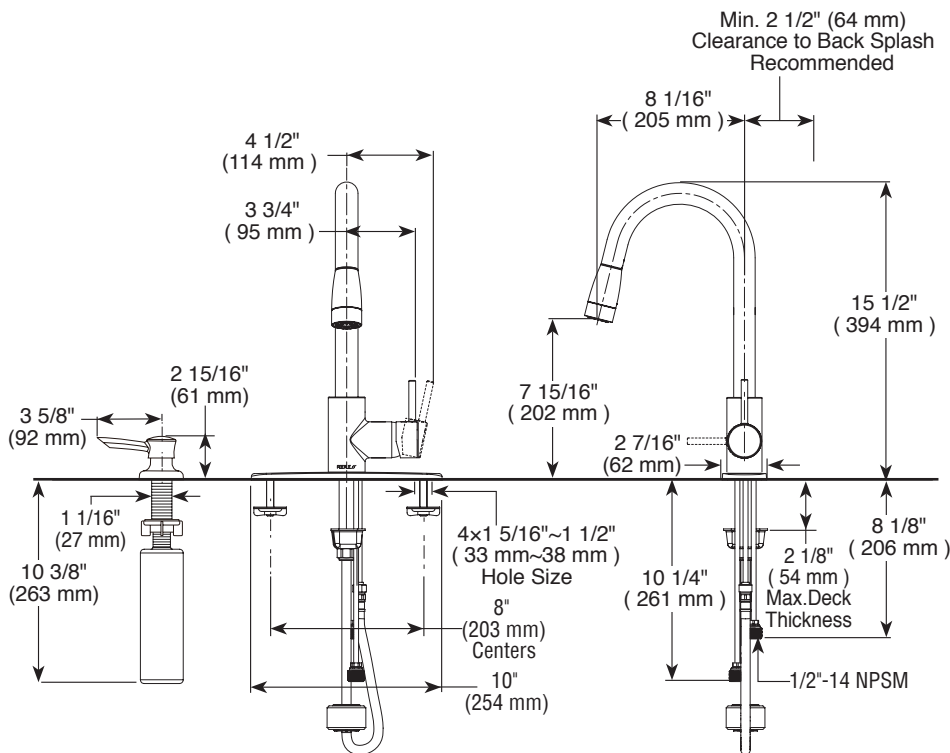
PEERLESS®

P188104LF-SD

Mounting without escutcheon plate:



Mounting with escutcheon plate:



KITCHEN FAUCET:

- Single Handle Deck Mount
- 1, 2, 3 or 4 Hole Sink Applications

STANDARD SPECIFICATIONS:

- Maximum 1.5 gpm @ 60 psi, 5.7 L/min @ 414 kPa
- One, two, three, four hole mount options (escutcheon and soap dispenser optional, included)
- Pull-down wand operates in an aerated or spray mode via a toggle diverter with 24" (610 mm) hose
- Dual integral check valves in sprayer
- Ceramic cartridge
- Spout rotates 360°
- 1/2"-14 NPSM threaded male inlet adapters

WARRANTY:

- Parts and Finish – Lifetime limited warranty; or for commercial purchasers, 10 years for multi-family residential (apartments and condominiums) and 5 years for all other commercial uses, in each case from the date of purchase.

COMPLIES WITH:

- ASME A112.18.1 / CSA B125.1
- Indicates compliance to ICC/ANSI A117.1