



# SERVICE PARTS LIST

**BULLETIN NO.**  
**54-49-8404**

SPECIFY CATALOG NO. AND SERIAL NO. WHEN ORDERING PARTS		REVISED BULLETIN	DATE
<b>PACKOUT™ Coolers</b>			Sept. 2022
CATALOG NO.	SERIAL NUMBER	WIRING INSTRUCTION	

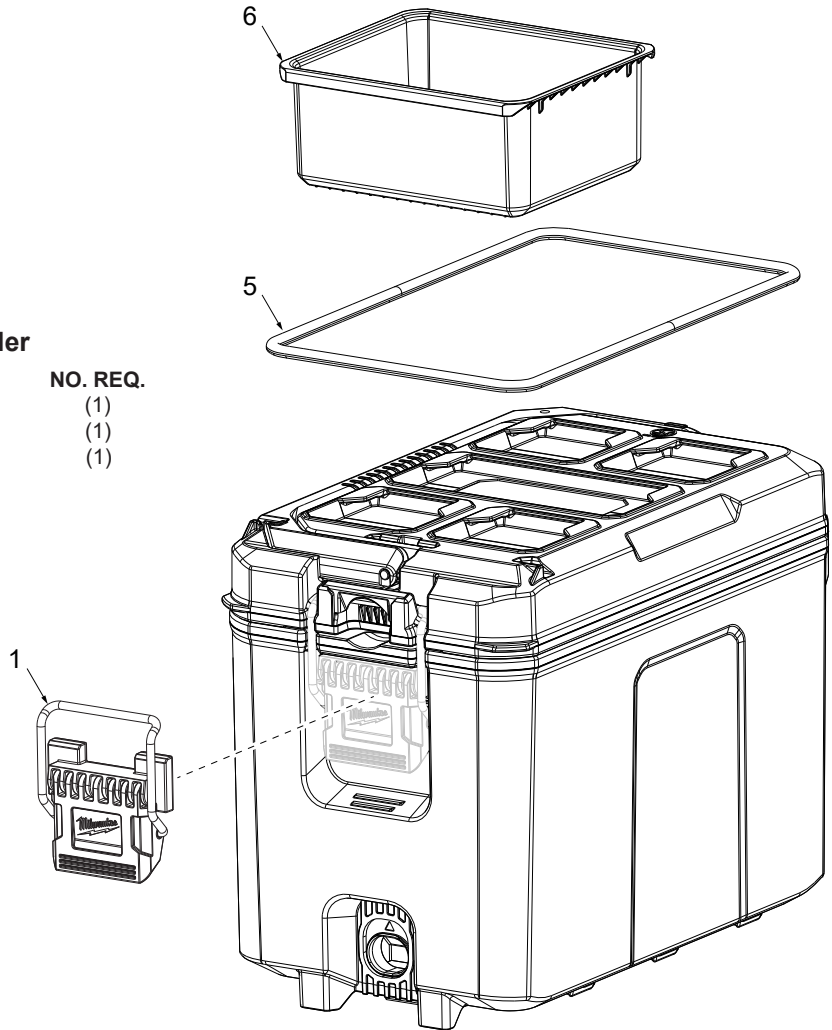
48-22-8460 PACKOUT™ Compact Cooler Page 1  
 48-22-8462 PACKOUT™ 40QT XL Cooler Page 2

**EXAMPLE:**  
 Component Parts (Small #) Are Included  
 When Ordering The Assembly (Large #).

Note: Tray, Dividers and Gasket  
 illustrated outside of PACKOUT, is to  
 be assembled on the inside.

## 48-22-8460 PACKOUT™ Compact Cooler

FIG.	PART NO.	DESCRIPTION OF PART	NO. REQ.
1	44-20-8422	Latch Assembly	(1)
5	31-01-8460	Tray	(1)
6	43-44-8460	Gasket	(1)



### Latch Removal and Installation

**Note:**  
 Procedure for removal and installation of the 44-20-8422 Latch (1).

- Removal:**
1. Undo latch from PACKOUT lid.
  2. Insert a flathead screwdriver in-between latch assembly and PACKOUT base to pry over the tabs. (Fig.1)
  3. Pull metal latch down to remove.

- Installation:**
1. Insert Latch Assembly into channel.
  2. Attach the metal latch to the lid. (Fig.2)
  3. Close latch to secure Latch Assembly in place inside the channel.

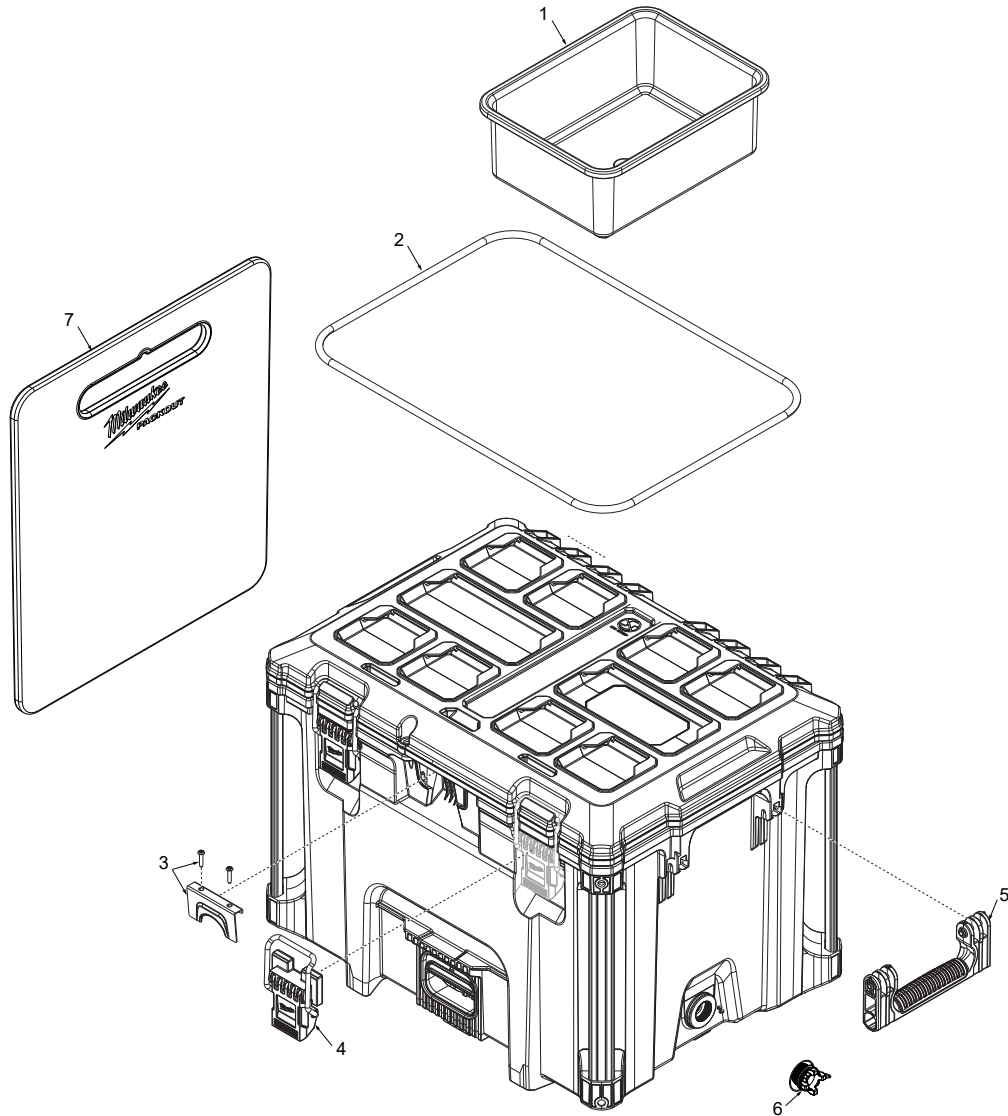
Fig.1



Fig. 2



Note: Tray, Dividers and Gasket illustrated outside of PACKOUT, is to be assembled on the inside.



**48-22-8462 PACKOUT™ 40QT XL Cooler**

FIG.	PART NO.	DESCRIPTION OF PART	NO. REQ.
1	31-44-8462	Tray	(1)
2	43-44-8462	Gasket	(1)
3	44-48-8462	Bottle Opener Service Kit	(1)
4	44-20-8400	Latch Service Kit (2 Latches)	(1)
5	43-62-8424	Handle Service Kit (2 Handles)	(1)
6	31-01-8462	Drain Plug Service Kit	(1)
7	48-22-8041	Cooler-Divider	(1)

**SEE PAGE 1 FOR LATCH REMOVAL AND INSTALLATION INSTRUCTIONS**