

LUBRICATION

Use Type 'L' Grease, No. 49-08-4175 (16 oz. tub)

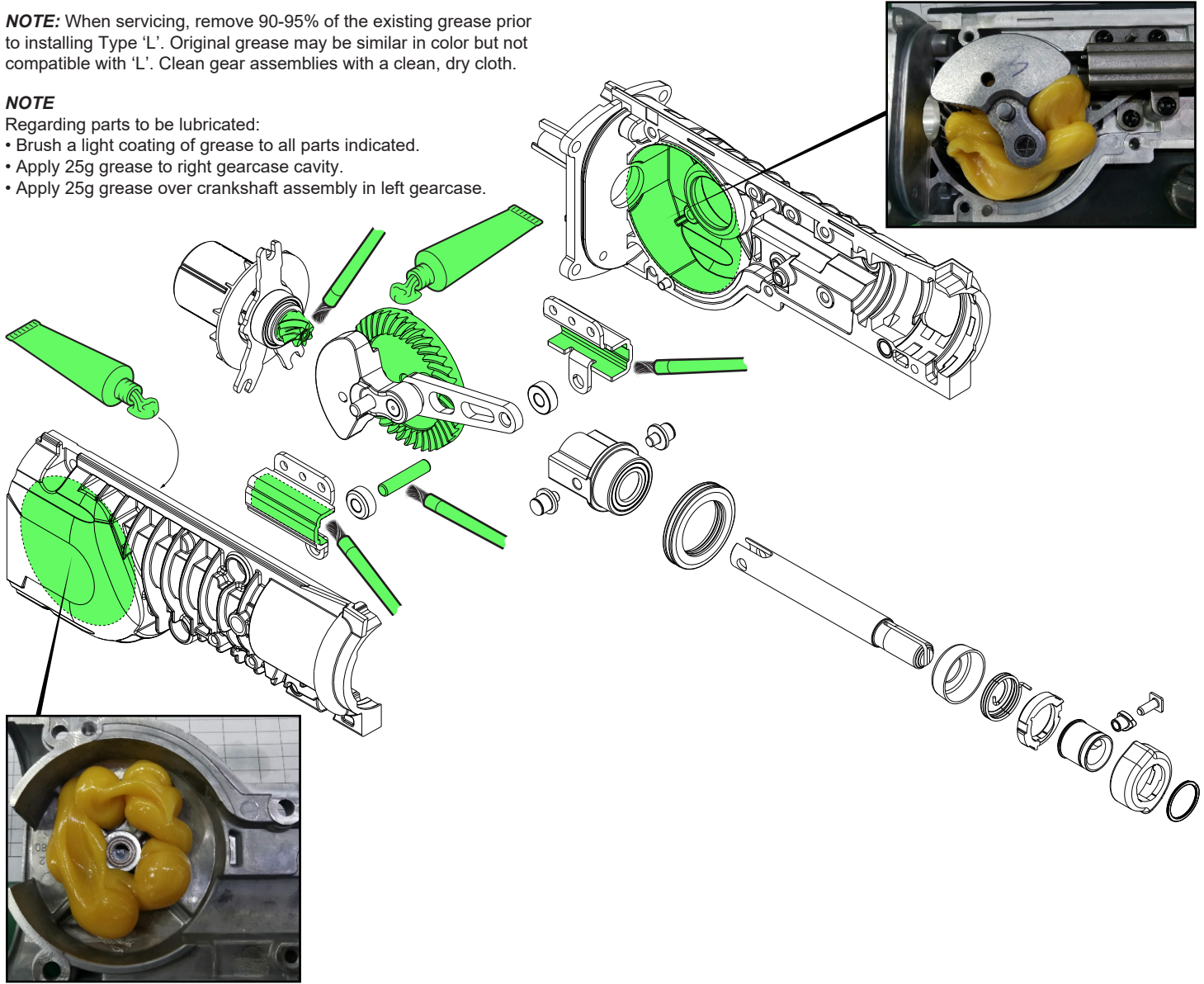
NOTE: When servicing, remove 90-95% of the existing grease prior to installing Type 'L'. Original grease may be similar in color but not compatible with 'L'. Clean gear assemblies with a clean, dry cloth.

NOTE

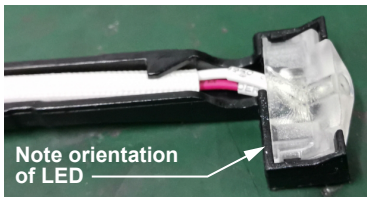
Regarding parts to be lubricated:

- Brush a light coating of grease to all parts indicated.
- Apply 25g grease to right gearcase cavity.
- Apply 25g grease over crankshaft assembly in left gearcase.

Install crankshaft assembly in left gearcase. Apply 25g of 'L' grease as shown.



Place 25g of 'L' grease in right gearcase cavity.

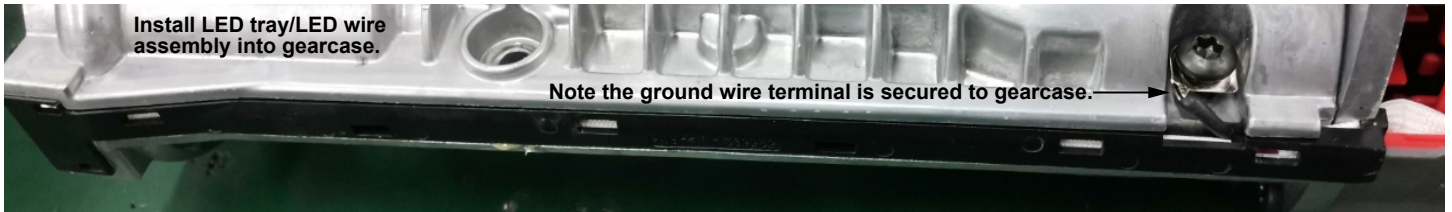


Note orientation of LED



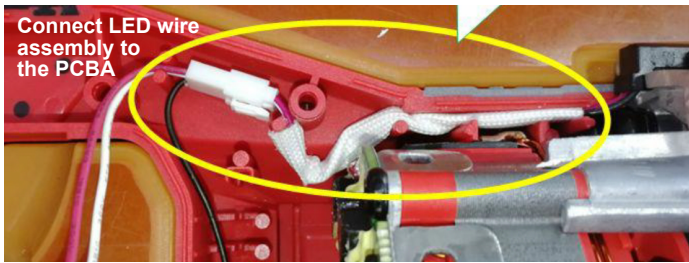
Press and route LED wire assembly down into channel of LED tray.

Ground wire and terminal

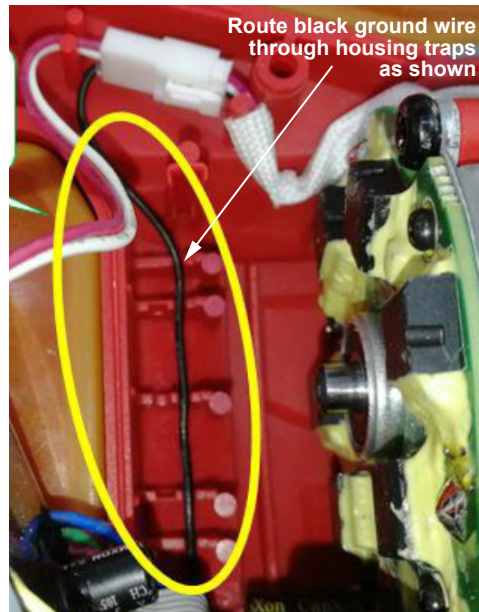


Install LED tray/LED wire assembly into gearcase.

Note the ground wire terminal is secured to gearcase.



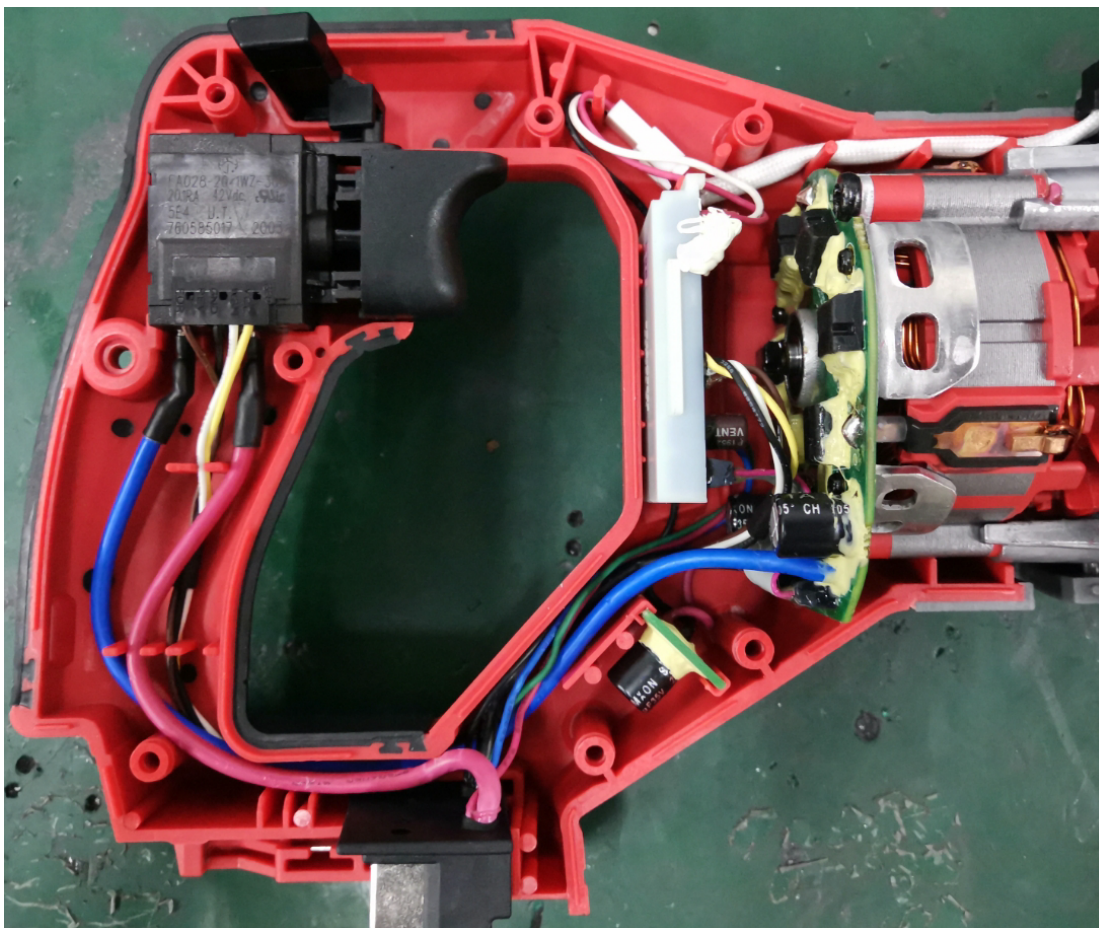
Connect LED wire assembly to the PCBA



Route black ground wire through housing traps as shown



Install electronic components and wires in housing cavities as shown



As an aid to reassembly, take notice of wire routings and position in wire guides and traps while dismantling tool.

Be sure that all components of electronics kit are seated firmly and squarely in housing recesses.

Avoid pinched wires, be sure that all wires and sleeves are pressed completely down in wire traps.

Prior to securing housing cover onto the housing support, be sure that there are no interferences.

Before installing the battery, check for proper functionality of shuttles and triggers.

Install battery and depress switch triggers to assure tool is operating properly.