

CODE NUMBER

0334030

DESCRIPTION

Sloan WB-1-A Easy Access Wall Box.

FEATURES

The Sloan WB-1-A Easy Access Wall Box allows for the installation of a Concealed Flushometer where behind the wall access is not provided. Ideal for vandal prone installations, the WB-1-A Easy Access Wall Box is engineered to withstand years of high volume use. The WB-1-A Easy Access Wall Box has a brushed Stainless Steel Wall Panel that enhances the appearance of the Flushometer installation.

The WB-1-A Easy Access Wall Box is designed to install in a 12" x 12" wall opening. The WB-1-A Wall Box can be used with both mechanical push button or hydraulically operated Sloan Flushometer valves.

The Wall Box Assembly has the following features:

- 13½" (343 mm) x 13½" (343 mm) #304 Brushed Stainless Steel Wall Panel (16 gauge)
- Steel Frame for a 12" (305 mm) x 12" (305 mm) wall opening
- Four (4) Spanner Security Screws with Spanner Bit
- Grouting Pins to anchor Frame to wall

The WB-1-A Easy Access Wall Box can be used with Sloan Royal®, Regal®, Naval® and Hydraulic Concealed Flushometers.

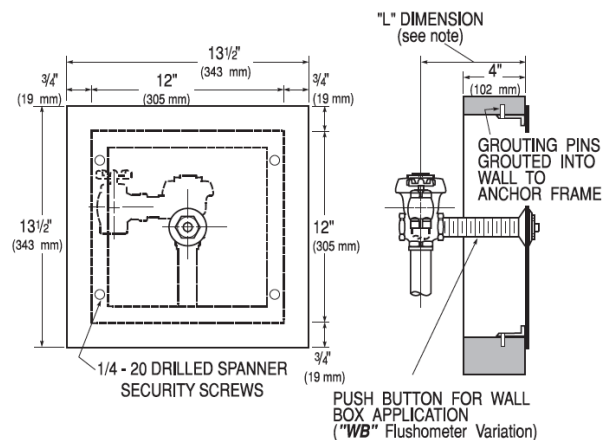
WALL BOX AND FLUSHOMETER MUST BE SPECIFIED AND ORDERED SEPARATELY.

When ordering a Sloan Flushometer (except Hydraulic) for use with the WB-1-A Easy Access Wall Box, specify the "WB" Variation (i.e., Model 152-WB). This will ensure that the Flushometer is supplied with the special Push Button/Handle assembly that is required for use in a wall box installation.

When ordering a Sloan Hydraulic Flushometer for use with the WB-1-A Easy Access Wall Box, specify the HY-33-A Fixture Wall (FW) or HY-108-A Metal Button Panel Mount (MBPM) Push Button Actuator. See the HYDRAULIC FLUSHOMETERS Section of the Sloan catalog for details on these Actuators.

NOTES

All information contained within this document subject to change without notice.



NOTE: "L" Dimension is the Wall Thickness (to the nearest whole inch) plus 2¾". Specify "L" Dimension when ordering Flushometer.

Sloan 10500 Seymour Ave, Franklin Park, IL 60131

Phone: 800.982.5839 • Fax: 800.447.8329 • sloan.com