

Irrigation & Superbooster Pumps

92000 & 93000 Series - Workhorse End Suction Centrifugal Pumps

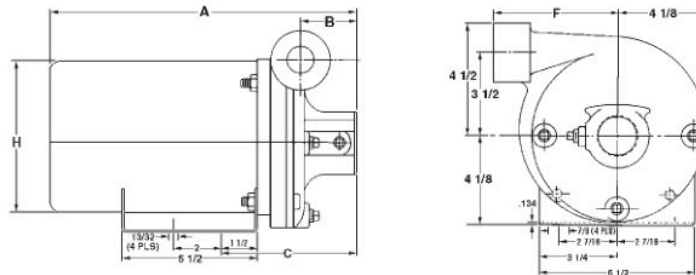
A.Y. McDonald Mfg. Co. 92000 & 93000 Series Centrifugal Pumps cover a wide range of applications. Ideal for booster systems, farms, industry, lawn sprinkling, irrigation, air conditioning, tower cooling, and other water transfer applications.

Features:

- Heavy duty cast iron construction
- Quality Nema standard square flange motor
- Precision molded Noryl impeller (no-lead bronze available)
- Four position discharge with three drain ports
- Easy serviceability with rear pull out design, no need to disturb plumbing
- 175° maximum



Dimensions



NOTE: Four position discharge - vertical or horizontal.
Air volume control tapping - optional on suction side of pump.

Irrigation & Superbooster Pumps

Specifications - Single Phase

Part No.	Model No.	HP	Voltage & Phase	Ports Suct.	Ports Disch.	A	B	C	F	H	Packing Dimen. Inches	Weight Lbs
6712-000	92030	1/3	115 / 230 / 1	1 1/4"	1"	15.40	2.35	6.10	4.35	5.60	15.5 x 8.5 x 10	36
6712-001	92050	1/2	115 / 230 / 1	1 1/4"	1"	15.40	2.35	6.10	4.35	5.60	15.5 x 8.5 x 10	36
6712-002	92070	3/4	230 / 115 / 1	1 1/4"	1"	15.90	2.35	6.10	4.35	5.60	16.5 x 9.5 x 10	36
6712-003	92100	1	230 / 115 / 1	1 1/4"	1"	16.40	2.35	6.10	4.35	5.60	16.5 x 9.5 x 10	38
6712-004	92150	1 1/2	230 / 115 / 1	1 1/4"	1"	16.60	2.35	6.10	4.35	5.60	16.5 x 9.5 x 10	42
6712-005	92200	2	230 / 1	1 1/2"	1 1/4"	18.15	2.90	6.75	4.70	6.30	18.25 x 9.5 x 10	43
6712-006	92250	2 1/2	230 / 1	2"	1 1/2"	18.15	2.90	6.75	4.70	6.30	18.25 x 9.5 x 10	43
6712-007	92300	3	230 / 1	2"	1 1/2"	18.15	2.90	6.75	4.70	6.30	18.25 x 9.5 x 10	54

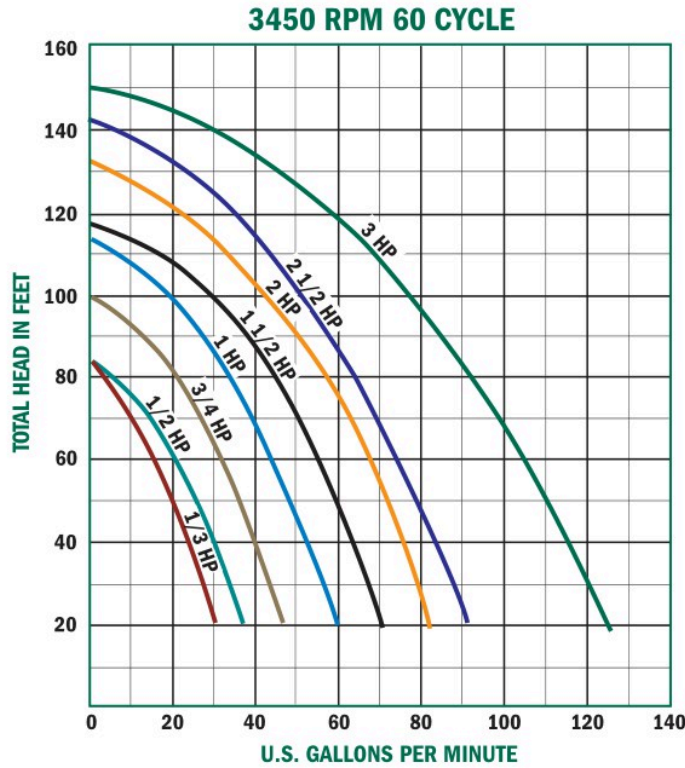
Specifications - Three Phase

Part No.	Model No.	HP	Voltage & Phase	Ports Suct.	Ports Disch.	A	B	C	F	H	Packing Dimen. Inches	Weight Lbs
6712-010	93050	1/2	230 / 3	1 1/4"	1"	15.40	2.35	6.10	4.35	5.60	15.5 x 8.5 x 10	32
6712-011	93070	3/4	230 / 3	1 1/4"	1"	15.90	2.35	6.10	4.35	5.60	16.5 x 9.5 x 10	34
6712-012	93100	1	230 / 3	1 1/4"	1"	16.40	2.35	6.10	4.35	5.60	16.5 x 9.5 x 10	37
6712-013	93150	1 1/2	230 / 3	1 1/4"	1"	16.60	2.35	6.10	4.35	5.60	16.5 x 9.5 x 10	41
6712-014	93200	2	230 / 3	1 1/2"	1 1/4"	18.15	2.90	6.75	4.70	6.30	18.25 x 9.5 x 10	48
6712-008	93300	3	230 / 3	2"	1 1/2"	18.15	2.90	6.75	4.70	6.30	18.25 x 9.5 x 10	58

Three Phase -- 208/230/460V, just need to change the wires for the desired voltage.
Factory set voltage in bold.

92000 & 93000 Series - Workhorse End Suction Centrifugal Pumps

Performance Curves



- Tested at 2 ft. lift

Model	92100	92150	92200	92250	92300
PEI	0.73	0.75	0.83	0.99	0.75
Imp. Dia. (in)	5.33	5.32	5.88	6.06	6.11

Performance (GPM)

Model No.	HP	Total Head in FT.											Max Head FT/PSIG		
		30	40	50	60	70	80	90	100	110	120	130		140	
92030	1/3	28	23	20	16	10									84' / 36#
93030															
92050	1/2	33	30	26	21	14								83' / 36#	
93050															
92070	3/4	42	40	36	31	28	21	11						100' / 43#	
93070															
92100	1	57	52	49	42	39	32	28	19					113' / 48#	
93100															
92150	1 1/2	68	62	60	55	50	43	38	30	18				118' / 51#	
93150															
92200	2	79	76	73	69	63	58	50	41	32	22			132' / 57#	
93200															
92250	2 1/2		84	79	75	70	65	59	52	45	35	24		142' / 61#	
93250															
92300	3		115	110	103	98	91	85	78	69	59	46	30	150' / 65#	
93300															
Model No.	HP	13	17	21	26	30	34	39	43	47	52	56	60		
		PSI													

Irrigation & Superbooster Pumps