

**TOUCH<sub>2</sub>O<sup>®</sup>**  
WITH **TOUCHLESS<sup>™</sup>**  
TECHNOLOGY

USER GUIDE



see what Delta can do<sup>™</sup>

# YOUR FAUCET, YOUR WAY

Choose from Touch<sub>2</sub>O® with Touchless™ or Touch<sub>2</sub>O® only.

Touch<sub>2</sub>O® and Touchless™ Technology use capacitive sensing technology, like your touch smartphone, to recognize human presence within 4 inches of the surface.

## SCAN TO VIEW VIDEO TUTORIALS



Installation



How to Use

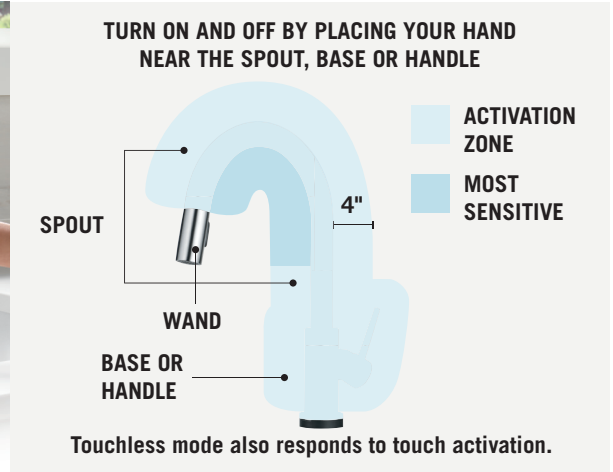


Troubleshooting

**FIND VIDEO TUTORIALS AT:**

<https://www.youtube.com/@deltafaucet>

# 1 TOUCH<sub>2</sub>O<sup>®</sup> WITH TOUCHLESS<sup>™</sup> TECHNOLOGY



- Turn the faucet handle to the on position
- Place your hand within 4 inches of the faucet to turn water on and off
- Touchless Technology is **most sensitive under the arc of the spout**
- Faucet senses humans, not objects, everywhere but the pull-down wand

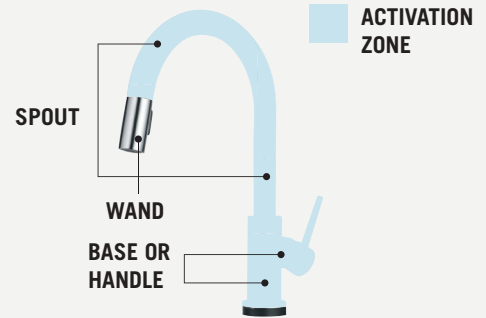
## 2 TOUCH<sub>2</sub>O<sup>®</sup> TECHNOLOGY



TAP WITH **WRIST,**  
**FOREARM,** OR **FINGER**



TURN ON AND OFF BY TAPPING  
THE SPOUT, BASE OR HANDLE



- Turn the faucet handle to the on position
- Tap anywhere on the spout, base or handle
- Tap with wrist, forearm or finger to turn the faucet on and off

Recommend installing accessories such as soap dispensers and beverage faucets at least five inches from the faucet.

# CHANGING MODES






## CURRENT MODE:

HIGH SENSITIVITY | TOUCH<sub>2</sub>O® WITH TOUCHLESS™ TECHNOLOGY

## TO CHANGE MODES:

1. Turn the faucet handle to the off position
2. Grab the faucet base and hold for 6 seconds
3. LED indicator will flash to signal what mode the faucet is in (*See chart below*)
4. Turn the faucet handle to the on position

Faucet will turn on and off using the handle regardless of mode or connection to power.

MODE	LED INDICATION	BEST FOR*
High Sensitivity	 5 Blue Flashes	Stainless Steel Sinks Granite Countertops
Low Sensitivity	 4 Purple Flashes	Porcelain or Acrylic Sinks Quartz, Formica® (Laminate), or Corian® Countertops
Touchless Off	 3 Red Flashes	Touch <sub>2</sub> O® or manual only operation




\*Your sink or counter material may affect the faucet's touchless sensing ability.

Please use the chart above to cycle through the modes so your faucet is in the right sensitivity setting to work best in your kitchen.

# PLACE THIS STICKER ON THE INSIDE OF YOUR CABINET FOR REFERENCE.

## TO CHANGE FAUCET MODES:

1. Turn the faucet handle to the off position
2. Grab the faucet base and hold for 6 seconds
3. LED indicator will flash to signal what mode the faucet is in (*See chart below*)
4. Turn the faucet handle to the on position

MODE	LED INDICATION
High Sensitivity	 5 Blue Flashes
Low Sensitivity	 4 Purple Flashes
Touchless Off	 3 Red Flashes



How to  
Use Video

### FIND VIDEO TUTORIALS AT:

<https://www.youtube.com/@deltafaucet>

844.923.5368



see what Delta can do™

115444 10/23