

# Aquastat Controllers

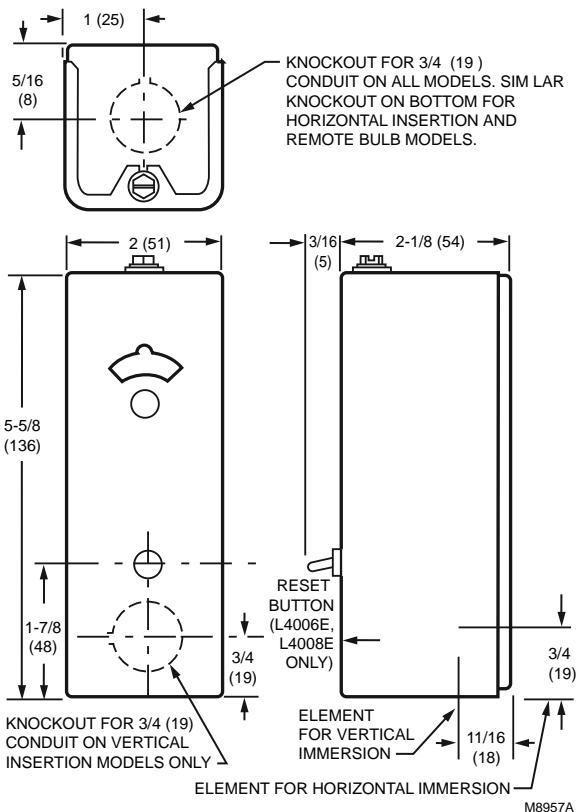
## L4006; L6006 Aquastat® Controller



Aquastat® Controllers are immersion type devices for limiting or regulating the temperature of liquids in boilers, storage tanks, and other applications where temperature control is required.

- Totally enclosed Micro Switch® snap-acting switches operate on temperature rise to setpoint.
- Visible control point scale and external adjustment screw permit easy setting.
- Horizontal or vertical insertion of the sensing element.
- Direct or well immersion of the sensing element.
- Models available for strap-on mounting.
- Remote bulb model may be used to sense air temperature in ducts and in outside air sensing applications.
- TRADELINE models include heat-conductive compound.
- Select models have wells.

### Dimensions in inches (millimeters)



**Case Dimensions:** 5 5/8 in. high x 2 in. wide x 2 1/8 in. deep  
(143 mm high x 51 mm wide x 54 mm deep)

**Bulb Size:** 3/8 in. x 2 7/8 in. (10 mm x 73 mm) copper

**Maximum Ambient Temperature:** 150 F (66 C)

### Approvals:

**American Gas Association IAS:** AGA Certified

**Canadian Standards Association:** Certified: File No. LR95329-1

**Underwriters Laboratories, Inc.** UL Component Recognized: File No. MP466, Vol. 6, Sec.1, Guide No. MBPR2

| Product Number | Electrical Ratings                |                                    |                         |
|----------------|-----------------------------------|------------------------------------|-------------------------|
|                | (Full Load)                       | (Locked Rotor)                     | (Millivolt)             |
| L4006A1009     | 8A @ 120 Vac;<br>5.1A @ 240 Vac   | 48A @ 120 Vac;<br>30.6A @ 240 Vac  | 0.25 A @ 0.25 to 12 Vdc |
| L4006A1017     |                                   |                                    |                         |
| L4006A1132     |                                   |                                    |                         |
| L4006A1678     |                                   |                                    |                         |
| L4006A1959     | 2.6A @ 120 Vac;<br>1.3A @ 240 Vac | 15.6A @ 120 Vac;<br>7.8A @ 240 Vac | —                       |
| L4006A1967     | 8A @ 120 Vac;<br>5.1A @ 240 Vac   | 48A @ 120 Vac;<br>30.6A @ 240 Vac  | 0.25 A @ 0.25 to 12 Vdc |
| L4006A2007     |                                   |                                    |                         |
| L4006B1007     |                                   |                                    |                         |
| L4006B1155     |                                   |                                    |                         |
| L4006B1163     | 8A @ 120 Vac;<br>1.3A @ 240 Vac   | 48A @ 120 Vac;<br>30.6A @ 240 Vac  | —                       |
| L4006E1067     |                                   |                                    | —                       |
| L4006E1091     |                                   |                                    | —                       |
| L4006E1109     |                                   |                                    | —                       |
| L4006E1117     | 8A @ 120 Vac;<br>1.3A @ 240 Vac   | 48A @ 120 Vac;<br>30.6A @ 240 Vac  | 0.25 A @ 0.25 to 12 Vdc |
| L4006E1125     |                                   |                                    |                         |
| L4006H1004     |                                   |                                    |                         |
| L6006A1004     |                                   |                                    |                         |
| L6006A1012     | 8A @ 120 Vac;<br>5.1A @ 240 Vac   | 48A @ 120 Vac;<br>30.6A @ 240 Vac  | 0.25 A @ 0.25 to 12 Vdc |
| L6006A1145     |                                   |                                    |                         |
| L6006A1244     |                                   |                                    |                         |
| L6006C1018     |                                   |                                    |                         |
| L6006C1059     |                                   |                                    |                         |

| Product Number | Application       | Operating Temperature Range |               | Differential Temperature |                  | Well Spud Size |           | Capillary Length |       | Switching Action                          | Mounting               | Includes  |
|----------------|-------------------|-----------------------------|---------------|--------------------------|------------------|----------------|-----------|------------------|-------|---|------------------------|---|
|                |                   | (F)                         | (C)           | (F)                      | (C)              | (inch)         | (mm)      | (inch)           | (mm)  |   |                        |   |
| L4006A1009     | High or Low limit | 100 F to 240 F              | 38 C to 116 C | 5 F Fixed                | 3 C fixed        | 1/2 in. NPT    | 13 mm NPT | 1 1/2 in.        | 38 mm | SPST, contacts break on temperature rise. | Horizontal or Vertical | 1/2 in. well - 123869A                                      |
| L4006A1017     | High or Low limit | 100 F to 240 F              | 38 C to 116 C | 5 F to 30 F adj.         | 3 C to 17 C adj. | 1/2 in. NPT    | 13 mm NPT | 1 1/2 in.        | 38 mm | SPST, contacts break on temperature rise. | Horizontal or Vertical | 1/2 in. well - 123869A                                      |
| L4006A1132     | High or Low limit | 100 F to 240 F              | 38 C to 116 C | 5 F Fixed                | 3 C fixed        | 3/4 in. NPT    | 19 mm NPT | 3 in.            | 76 mm | SPST, contacts break on temperature rise. | Horizontal or Vertical | Stop factory-set at 160 F (71 C);<br>3/4 in. well - 123871A |

\* TRADELINE models • SUPER TRADELINE models

# Aquastat Controllers

| Product Number | Application                                    | Operating Temperature Range |               | Differential Temperature |                  | Well Spud Size   |                | Capillary Length   |                | Switching Action                          | Mounting                                    | Includes   |
|----------------|--|-----------------------------|---------------|--------------------------|------------------|------------------|----------------|--------------------|----------------|---|---|--|
|                |  | (F)                         | (C)           | (F)                      | (C)              | (inch)           | (mm)           | (inch)             | (mm)           |   |   |  |
| * L4006A1678   | High or Low limit                              | 100 F to 240 F              | 38 C to 116 C | 5 F to 30 F adj.         | 3 C to 17 C adj. | —                | —              | 3 in.              | 76 mm          | SPST, contacts break on temperature rise. | Horizontal or Vertical                      | Heat-conductive compound; Stop factory-set at 240 F (116 C)                                |
| * L4006A1959   | High or Low limit                              | 40 F to 180 F               | 4 C to 82 C   | 5 F Fixed                | 3 C fixed        | —                | —              | 3 in.              | 76 mm          | SPST, contacts break on temperature rise. | Horizontal or Vertical                      | Heat-conductive compound   |
| * L4006A1967   | High or Low limit                              | 100 F to 240 F              | 38 C to 116 C | 5 F to 30 F adj.         | 3 C to 17 C adj. | 1/2 in.          | 13 mm          | 1 1/2 in.          | 38 mm          | SPST, contacts break on temperature rise. | Horizontal or Vertical                      | Stop factory-set at 240 F (116 C); 1/2 in. well - 123869A                                  |
| L4006A2007     | High or Low limit                              | 100 F to 240 F              | 38 C to 116 C | 5 F to 30 F adj.         | 3 C to 17 C adj. | —                | —              | 3 in.              | 76 mm          | SPST, contacts break on temperature rise. | Horizontal                                  | —  |
| L4006B1007     | Circulator                                     | 100 F to 240 F              | 38 C to 116 C | 5 F Fixed                | 3 C fixed        | 1/2 in.          | 13 mm          | 1 1/2 in.          | 38 mm          | SPST, contacts make on temperature rise.  | Horizontal or Vertical                      | 1/2 in. well - 123869A   |
| * L4006B1155   | Circulator                                     | 100 F to 240 F              | 38 C to 116 C | 5 F to 30 F adj.         | 3 C to 17 C adj. | —                | —              | 3 in.              | 76 mm          | SPST, contacts make on temperature rise.  | Horizontal or Vertical                      | Heat-conductive compound; Stop factory-set at 240 F (116 C)                                |
| L4006B1163     | Circulator                                     | 100 F to 240 F              | 38 C to 116 C | 5 F to 30 F adj.         | 3 C to 17 C adj. | —                | —              | 3 in.              | 76 mm          | SPST, contacts make on temperature rise.  | Horizontal or Vertical                      | —  |
| * L4006E1067   | High Limit; Manual Reset                       | 130 F to 270 F              | 54 C to 132 C | Manual Reset             | Manual Reset     | —                | —              | 3 in.              | 76 mm          | SPST, contacts break on temperature rise. | Horizontal or Vertical                      | Well adapter; Stop factory-set at 250 F (121 C); Heat-conductive compound                  |
| L4006E1091     | High Limit; Manual Reset                       | 130 F to 270 F              | 54 C to 132 C | Manual Reset             | Manual Reset     | —                | —              | 3 in.              | 76 mm          | SPST, contacts break on temperature rise. | Horizontal or Vertical                      | —  |
| L4006E1109     | High Limit; Manual Reset                       | 130 F to 270 F              | 54 C to 132 C | Manual Reset             | Manual Reset     | —                | —              | 1 1/2 in. to 3 in. | 38 mm to 76 mm | SPST, contacts break on temperature rise. | Horizontal or Vertical                      | —  |
| L4006E1117     | High Limit; Manual Reset                       | 100 F to 240 F              | 38 C to 116 C | Manual Reset             | Manual Reset     | 3/4 in. - 14 NPT | 19 mm - 14 NPT | 1 1/2 in.          | 38 mm          | SPST, contacts break on temperature rise. | Horizontal or Vertical                      | 3/4 in. well - 123870A   |
| L4006E1125     | High Limit; Manual Reset                       | 100 F to 200 F              | 38 C to 93 C  | Manual Reset             | Manual Reset     | —                | —              | 3 in.              | 76 mm          | SPST, contacts break on temperature rise. | Horizontal or Vertical                      | —  |
| * L4006H1004   | High Limit; strap-on mounting on well mount.   | 100 F to 240 F              | 38 C to 116 C | Manual Reset             | Manual Reset     | —                | —              | 1 1/2 in.          | 38 mm          | SPST, contacts break on temperature rise. | Horizontal or Vertical                      | Bracket for strap-on mounting; Heat-conductive compound; Stop factory-set at 240 F (116 C) |
| L6006A1004     | Circulator Control and High Limit or Low Limit | 100 F to 240 F              | 38 C to 116 C | 5 F                      | 3 C              | 1/2 in.          | 13 mm          | 1 1/2 in.          | 38 mm          | SPDT                                      | Horizontal or Vertical                      | 1/2 in. well - 123869A   |
| L6006A1012     | Circulator Control and High Limit or Low Limit | 100 F to 240 F              | 38 C to 116 C | 5 F to 30 F adj.         | 3 C to 17 C adj. | 1/2 in.          | 13 mm          | 1 1/2 in.          | 38 mm          | SPDT                                      | Horizontal or Vertical                      | 1/2 in. well - 123869A   |
| * L6006A1145   | Circulator Control and High Limit or Low Limit | 100 F to 240 F              | 38 C to 116 C | 5 F to 30 F adj.         | 3 C to 17 C adj. | —                | —              | 3 in.              | 76 mm          | SPDT                                      | Horizontal                                  | Heat-conductive compound; Stop factory-set at 240 F (116 C)                                |
| L6006A1244     | Circulator Control and High Limit or Low Limit | 100 F to 240 F              | 38 C to 116 C | 5 F to 30 F adj.         | 3 C to 17 C adj. | —                | —              | 3 in.              | 76 mm          | SPDT                                      | Horizontal or Vertical                      | —  |
| * L6006C1018   | Circulator Control and High Limit or Low Limit | 65 F to 200 F               | 18 C to 93 C  | 5 F to 30 F adj.         | 3 C to 17 C adj. | —                | —              | —                  | —              | SPDT                                      | Horizontal or Vertical or Strap-on-mounting | Stop factory-set at 200 F (93 C)   |
| L6006C1059     | Circulator Control and High Limit or Low Limit | 65 F to 200 F               | 18 C to 93 C  | 5 F to 30 F adj.         | 3 C to 17 C adj. | —                | —              | —                  | —              | SPDT                                      | Horizontal or Vertical                      | Stop factory-set at 200 F (93 C)   |

\* TRADELINE models • SUPER TRADELINE models