

THE LINEMAN'S OFFICE



**KLEIN
TOOLS** 

REVAMP THE WAY YOU WORK

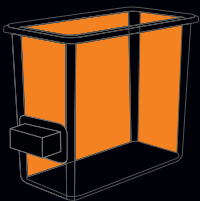


SCAN ME
For the Builder

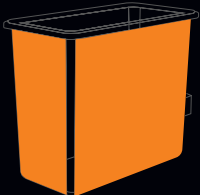
BUCKET WORK CENTER...



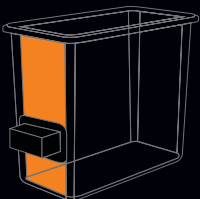
Is an ecosystem that will revamp the way a Lineman works. It allows a Lineman to customize their workspace, just like other professionals customize their office space. This will be "The Lineman's office." The Bucket Work Center easily connects to aerial buckets with a standard 2" or 3" lip and is made of impact resistant materials with dielectric properties to help stand up to the toughest work environments. An assortment of modules are available to customize each workstation to fit the tools needed for the job.



A variety of the Bucket Work Center modules hang on the inside of a utility bucket



Specific modules hang on the outside of a utility bucket



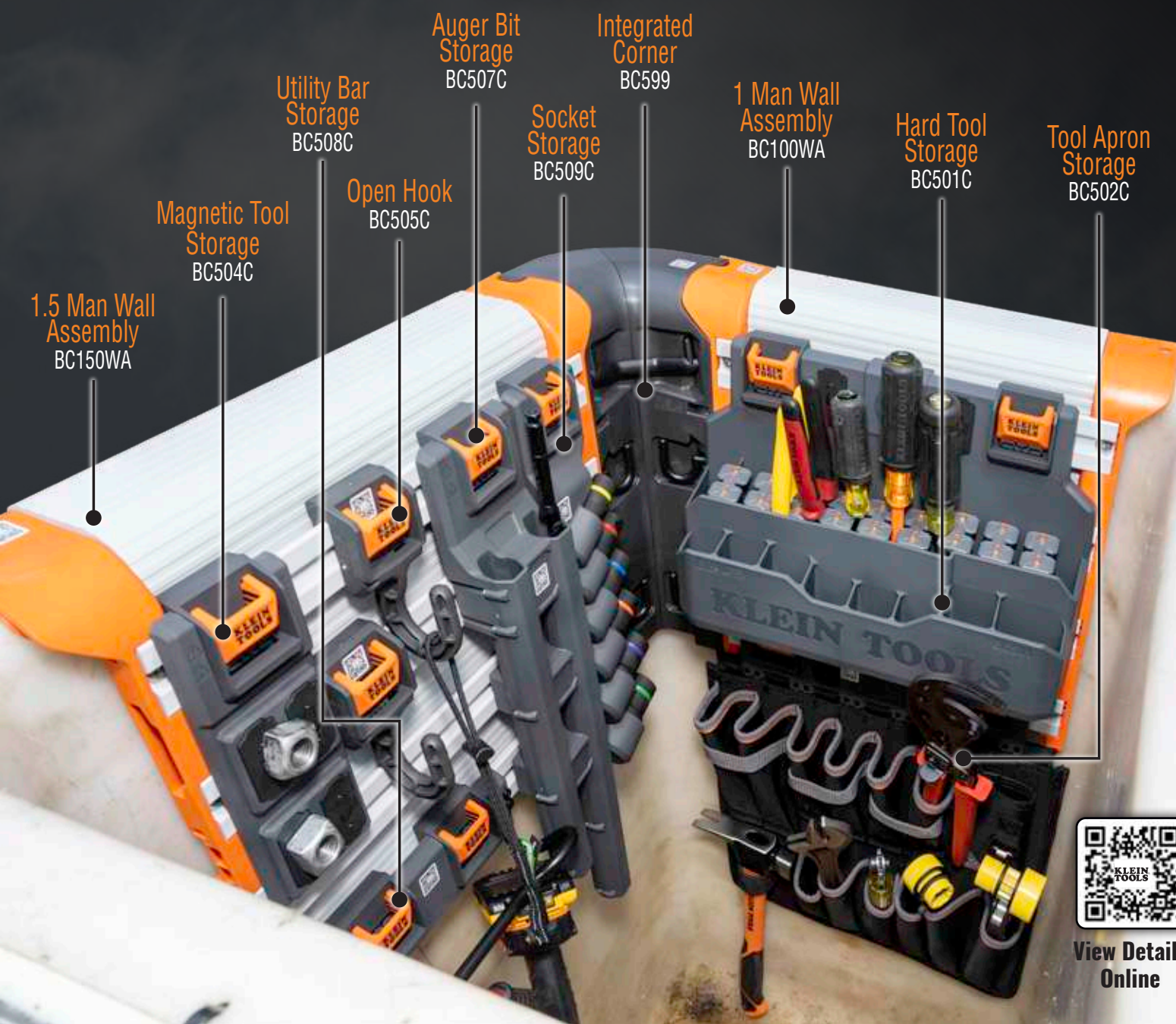
There is still room to add S-Hook modules to the utility bucket even when using the Rail System



RAIL SYSTEM MODULES



INNOVATIVE • VERTICAL & HORIZONTAL MODULAR SYSTEM • VERSATILE APPLICATION • EASY INSTALLATION



View Details
Online

S-HOOK MODULES



TRADITIONAL • HORIZONTAL MODULAR SYSTEM • EFFICIENT ORGANIZATION • CUSTOMIZABLE CONFIGURATION

Auger Bit
Storage
BC507S

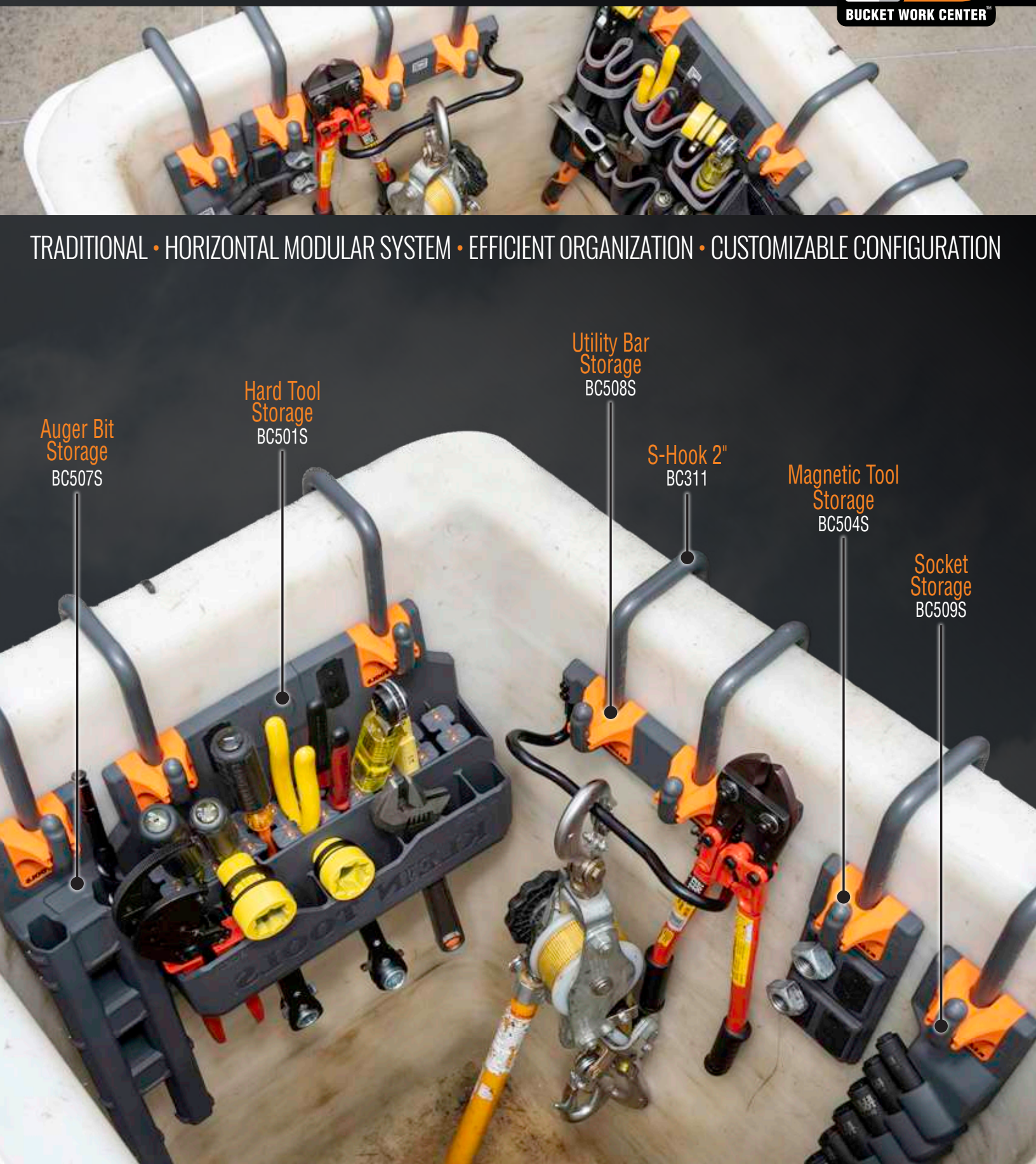
Hard Tool
Storage
BC501S

Utility Bar
Storage
BC508S

S-Hook 2"
BC311

Magnetic Tool
Storage
BC504S

Socket
Storage
BC509S



WALL ASSEMBLY



UV Resistant, Dielectric Plastic (up to 35kV)

- To withstand work conditions from -25°F to +125°F
- Available in 3 sizes to fit standard utility buckets
- 50 lb load rating for each rail
- Special design bumpers allow Rail System to stay in place during transit and articulation of aerial buckets
- Easily attaches to utility buckets with quick release and adjustable clamps
- Features (4) inside and (1) outside rail for customization
- 1 Man - 19.27" x 4.4" x 15.94" (48.9 x 11.2 x 40.5 cm)
- 1.5 Man - 22.77" x 4.4" x 15.94" (57.8 x 11.2 x 40.5 cm)
- 2 Man - 40.27" x 4.4" x 15.94" (102.3 x 11.2 x 40.5 cm)

1 Man

Wall Assembly

BC100WA



1.5 Man

Wall Assembly

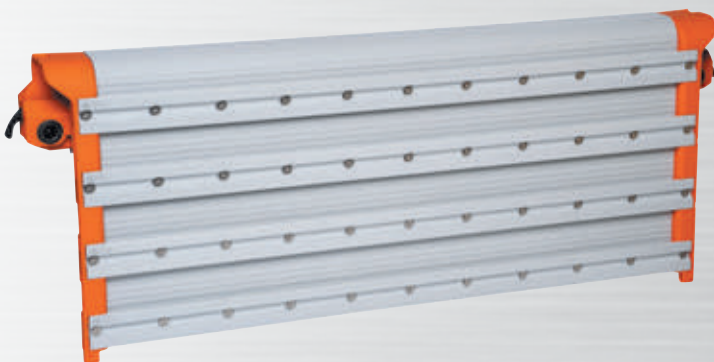
BC150WA



2 Man

Wall Assembly

BC200WA



Storage Wall Assembly*



BC99WA

- 6 screw holes to easily mount to truck cabins, walls, and workstations
- Transfer Bucket Work Center rail modules and tools effortlessly between utility buckets, truck cabins, flat surfaces or workstations, cabins or any flat storage location
- 40 lb load rating
- 12.7" x 0.9" x 14" (32.3 x 2.3 x 35.6 cm)
- * Not for utility buckets

NEW

Wall Assembly, S-Hook Module



BC100S

- Uses 2 s-hooks to connect to standard size utility buckets (Cat. Nos. BC311, BC312, sold separately)
- Variety of rail modules are available for purchase that connect to the Wall Assembly
- 40 lb load rating
- 12.7" x 2.3" x 14" (32.3 x 5.8 x 35.6 cm)

NEW

Integrated Corner Piece



BC599

- Seamlessly connects to the 1 Man, 1.5 Man, or 2 Man Wall Assembly pieces for a continuous storage system
- 4 hooks and a flip bar can swivel in and out
- Accommodates different size lineman tools while making use of dead space in the corner
- Made with impact resistant nylon to stand up to tough working conditions
- Load rating:
 - Flip bar - 50 lb
 - Hooks - 25 lb (per hook)
- 8.05" x 8.05" x 15.87" (20.4 x 20.4 x 40.3 cm)



RAIL SYSTEM MODULES



Hard Tool Storage Module

- 18 compartments hold a wide variety of lineman tools
- Rare-earth magnets hold hardware and small tools
- Innovative design intended to be more durable than traditional tool aprons
- Rubber flaps hold tools during transit and are also adjustable and replaceable
- Made with impact resistant nylon to stand up to tough working conditions
- 15.2" x 4.9" x 11.5" (38.6 x 12.6 x 29.1 cm)



BC501C

Auger Bit Storage Module

- 2 slots to store 12", 18", or 24" long auger bits
- Aluminum spacer slides into one slot to store a 12" auger bit in the 18" holder or store an 18" long auger bit in the 24" bit holder (Cat. No. BC507i)
- Module will not melt with hot auger bits, or dull tips of auger bits
- Made with impact resistant nylon to stand up to tough working conditions
- 4.1" x 2.8" x 21.1" (10.4 x 7.2 x 53.6 cm)



BC507C

Tool Apron Storage Module

- 12 compartments to accommodate a wide variety of lineman tools
- Double stitched hammer loop and knife pouch helps keep tools secure when not in use
- Rare-earth magnets hold hardware and small tools
- Innovative design intended to be more durable than traditional tool aprons
- Bonus buckle for extra storage
- 15.5" x 2.2" x 19.7" (39.4 x 5.6 x 50.0 cm)



BC502C

Utility Bar Storage Module

- 10" long bar allows tools to slide in and out with ease
- Holds lineman tools including hammers, straps, ropes and long handled tools
- Made with impact resistant nylon to stand up to tough working conditions
- 10.1" x 3.9" x 3.9" (25.6 x 9.9 x 9.9 cm)
- Not a tether point
- Not for fall arrest
- Not for dropped object prevention



BC508C

Magnetic Tool Storage Module

- Rare-earth magnetic plates hold hand tools, sockets, bits and small parts
- Strong enough to hold lineman's pliers
- Made with impact resistant nylon to stand up to tough working conditions
- 3.54" x 1.58" x 8.71" (9.0 x 4.0 x 22.1 cm)



BC504C

Work Tray Module **NEW**

- UV resistant, dielectric plastic (up to 35kV) to withstand work conditions from -25°F to +125°F
- Holds a wide variety of lineman hand tools, power tools, and hardware
- Positioned outside a bucket at optimal height to easily access tools
- Supporting arms lock beneath rail for optimal fit
- 20.6" x 12.2" x 8.8" (52 x 31 x 22 cm)
- Not for human support



BC503C

Socket Storage Module

- 6 slots to store commonly used impact socket sizes or Klein's Impact Socket Set, sold separately (Cat. No. 66010)
- Fits a range of socket sizes from 3/8" to 1-1/8"
- Magnetic slots to keep sockets in place during transit
- Sockets are stored from smallest to largest to quickly identify the right size needed for the job
- Made with impact resistant nylon to stand up to tough working conditions
- 3.5" x 2.2" x 15.4" (8.9 x 5.6 x 39.1 cm)



BC509C

Hardware Pouch Module **NEW**

- Dual action carabiner helps keep tools and parts secure when in transit
- Holds a wide variety of lineman hand tools and hardware
- Drain holes to prevent water build-up
- Rare-earth magnets hold hardware and small tools
- Made with impact resistant nylon & 1680d material to stand up to tough working conditions
- 12.8" x 5.9" x 10.5" (32.5 x 15.1 x 26.7 cm)
- 25 lb load rating
- Not for fall arrest
- Not a tether point
- Not for drop object prevention



BC510C



RAIL SYSTEM MODULES



Large Pouch Module *NEW*

- Dual action carabiner helps keep tools and parts secure when in transit
- Holds a wide variety of lineman hand tools, power tools, and hardware
- Drain holes to prevent water build-up
- 2 front pockets for additional storage
- Rare-earth magnets hold hardware and small tools
- Made with impact resistant nylon & 1680d material to stand up to tough working conditions
- 20.25" x 6.7" x 9.97" (51.4 x 16.9 x 25.3 cm)
- Not for fall arrest
- Not a tether point
- Not for drop object prevention



BC511C

Multi-Tool Holder Module *NEW*

- Metal hammer loop hold lineman hammers, wrenches, & other long handled tools
- 2 dual action carabiners hold a wide variety lineman tools including grips
- 1680d material to stand up to tough working conditions
- Robust clip on the back of the module can be handled even when wearing class 2 insulated gloves
- 8.5" x 4.1" x 8.5" (21.6 x 10.4 x 21.6 cm)
- Not a tether point
- Not for fall arrest
- Not for dropped object prevention
- 25 lb load rating



BC512C

Oval Bucket Module

- Positioned outside a bucket at optimal height to easily access tools
- Handle for easy removal from inside of the aerial bucket
- Holds a wide variety of lineman hand tools, power tools, and hardware
- Made with impact resistant nylon to stand up to tough working conditions
- 14.5 x 7.5 x 10.8 in (37 x 19 x 27.5 cm)
- 40 lb load rating



BC513C

Cup Holder

- Connects to the Bucket Work Center Rail System and provides easy access to hydration at the jobsite
- Flexible fingers adjust to secure a variety of beverage holder sizes
- Cup holder swivels when rotated so beverage stays upright and prevents spills when tilted
- 7.6 x 6.2 x 4.2 in (19.3 x 16 x 10.7 cm)



54817MB

Open Hook Module

- Easily attaches to the inside rails of the Wall Assembly
- Single hook holds a wide variety of lineman tools
- Made with impact resistant nylon to stand up to tough working conditions
- 3.11" x 2.45" x 5.02" (7.89 x 6.22 x 12.7 cm)



BC505C

Closed Hook Module

- Easily attaches to the inside or outside rails of the Wall Assembly
- Helps secure tools to prevent from falling
- Single hook holds a wide variety of lineman tools
- Open the latch even with gloves on
- Made with impact resistant nylon to stand up to tough working conditions
- 3.11" x 2.45" x 5.02" (7.89 x 6.22 x 12.7 cm)



BC506C



S-HOOK MODULES

Hard Tool Storage Module

- 18 compartments hold a wide variety of lineman tools
- Rare-earth magnets hold hardware and small tools
- Innovative design intended to be more durable than traditional tool aprons
- Rubber flaps hold tools during transit and are also adjustable and replaceable
- Made with impact resistant nylon to stand up to tough working conditions
- 15.2" x 4.6" x 11.2" (38.6 x 11.6 x 28.5 cm)



BC501S

Auger Bit Storage Module

- 2 slots to store 12", 18", or 24" long auger bits
- Aluminum spacer slides into one slot to store a 12" auger bit in the 18" holder or store an 18" long auger bit in the 24" bit holder (Cat. No. BC507i)
- Module will not melt with hot auger bits, or dull tips of auger bits
- Made with impact resistant nylon to stand up to tough working conditions
- 4.1" x 2.2" x 21.1" (10.4 x 5.6 x 53.6 cm)



BC507S

Tool Apron Storage Module

- 12 compartments to accommodate a wide variety of lineman tools
- Double stitched hammer loop and knife pouch helps keep tools secure when not in use
- Rare-earth magnets hold hardware and small tools
- Innovative design intended to be more durable than traditional tool aprons
- Bonus buckle for extra storage
- 15.5" x 2.2" x 19.5" (39.4 x 5.6 x 49.5 cm)



BC502S

Utility Bar Storage Module

- 10" long bar allows tools to slide in and out with ease
- Holds lineman tools including hammers, straps, ropes and long handled tools
- Made with impact resistant nylon to stand up to tough working conditions
- 10.1" x 3.3" x 3.74" (25.6 x 8.4 x 9.5 cm)
- Not a tether point
- Not for fall arrest
- Not for dropped object prevention



BC508S

Magnetic Tool Storage Module

- Rare-earth magnetic plates hold hand tools, sockets, bits and small parts
- Strong enough to hold lineman's pliers
- Made with impact resistant nylon to stand up to tough working conditions
- 3.54" x 1.97" x 8.71" (9.0 x 5.0 x 22.1 cm)



BC504S

Socket Storage Module

- 6 slots to store commonly used impact socket sizes or Klein's Impact Socket Set, sold separately (Cat. No. 66010)
- Fits a range of socket sizes from 3/8" to 1-1/8"
- Magnetic slots to keep sockets in place during transit
- Sockets are stored from smallest to largest to quickly identify the right size needed for the job
- Made with impact resistant nylon to stand up to tough working conditions
- 3.5" x 2.2" x 15.2" (8.9 x 5.6 x 38.6 cm)



BC509S

S-Hooks

- Designed to attach to bucket lips for optimized fit to hold all S-Hook Modules
- BC311: 5.49" x 0.67" x 6.05" (13.9 x 1.7 x 15.4 cm)
- BC312: 5.8" x 0.67" x 6.3" (14.7 x 1.7 x 16 cm)
- Inspect before each use
- 50 lb load rating



BC311



BC312

REPLACEMENT PARTS

Aluminum Spacer

- Slides into one slot to store a 12" auger bit in the 18" holder or store an 18" long auger bit in the 24" bit holder
- Replacement part for the Auger Bit Module (Cat. Nos. BC507C, BC507S)

BC507i

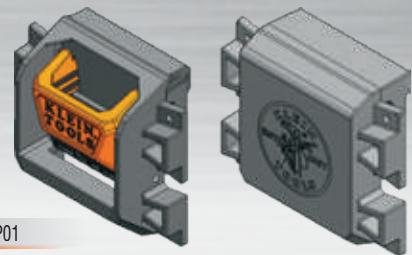


Rail System Cartridges with Blank Insert Cartridge

NEW★

- 2 pack
- Replacement part for Bucket Work Center Rail Modules
- Easily secure with screws
- Includes: 2x cartridges, 1x blank cartridge and screws

BCRP01



Rail System Cartridges

NEW★

- 4 pack
- Replacement part for Bucket Work Center Rail Modules
- Easily secure with screws
- Includes: 4x cartridge and screws

BCRP02

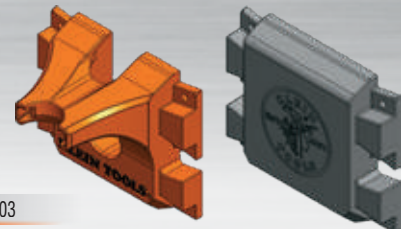


S-Hook Cartridges with Blank Insert Cartridge

NEW★

- 2 pack
- Replacement part for Bucket Work Center S-Hook Modules
- Easily secure with screws
- Includes: 2x cartridges, 1x blank cartridge and screws

BCRP03

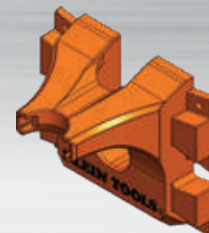


S-Hook Cartridges

NEW★

- 4 pack
- Replacement part for Bucket Work Center S-Hook Modules
- Easily secure with screws
- Includes: 4x cartridge and screws

BCRP04



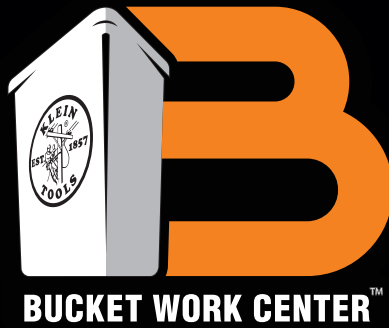
Hard Tool Module Flaps

NEW★

- 9 pack
- Easily secure with screws
- Includes: 9x flaps and screws

BCRP05





BUCKET WORK CENTER™



Cat. No.	UPC 0-92644+	Description	Rail or S-Hook
BC99WA	61050-9	Storage Wall Assembly	–
BC100S	61052-3	Wall Assembly, S-Hook	S-Hook
BC100WA	61037-0	1 Man Wall Assembly	–
BC150WA	61039-4	1.5 Man Wall Assembly	–
BC200WA	61040-0	2 Man Wall Assembly	–
BC311	88013-1	S-Hook, 2"	S-Hook
BC312	88014-8	S-Hook, 3"	S-Hook
BC501C	61016-5	Hard Tool Storage Module	Rail
BC501S	88006-3	Hard Tool Storage Module	S-Hook
BC502C	61036-3	Tool Apron Storage Module	Rail
BC502S	88007-0	Tool Apron Storage Module	S-Hook
BC503C	61028-8	Work Tray Module	Rail
BC504C	61029-5	Magnetic Tool Storage Module	Rail
BC504S	88008-7	Magnetic Tool Storage Module	S-Hook
BC505C	61030-1	Open Hook Module	Rail
BC506C	61031-8	Closed Hook Module	Rail
BC507C	61032-5	Auger Bit Storage Module	Rail
BC507i	61048-6	Aluminum Spacer, Replacement Part	–

Cat. No.	UPC 0-92644+	Description	Rail or S-Hook
BC507S	88009-4	Auger Bit Storage Module	S-Hook
BC508C	61033-2	Utility Bar Storage Module	Rail
BC508S	88010-0	Utility Bar Storage Module	S-Hook
BC509C	61034-9	Socket Storage Module	Rail
BC509S	88011-7	Socket Storage Module	S-Hook
BC510C	61053-0	Hardware Pouch Module	Rail
BC511C	61054-7	Large Pouch Module	Rail
BC512C	61055-4	Multi-Tool Holder Module	Rail
BC513C	61056-1	Oval Bucket Module	Rail
BC599	61041-7	Integrated Corner Piece	Rail
BCRP01	61043-1	Rail System Cartridges, 2 pack (with blank insert cartridge), Replacement Part	Rail
BCRP02	61044-8	Rail System Cartridge only, 4 pack, Replacement Part	Rail
BCRP03	61045-5	S-Hook System Cartridges (with blank insert cartridge), Replacement Part	S-Hook
BCRP04	61046-2	S-Hook System Cartridge only, 4 pack, Replacement Part	S-Hook
BCRP05	61047-9	Hard Tool Module Flaps, 9 pack (with screws), Replacement Part	Rail & S-Hook
54817MB	54817-8	Cup Holder	Rail

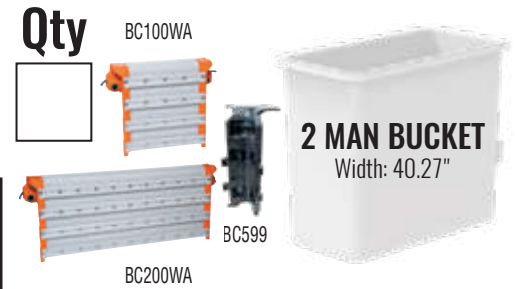
Warning Symbol
 Weight Rating: 40 lbs
 Weight Rating: 50 lbs
 Inside Bucket Use Only
 Not For Fall Arrest
 Do Not Step or Stand
 No Tether Point: Not for Fall Arrest, Not for Dropped Object Prevention

Truck #: _____ Truck #: _____

Phone #: _____ Phone #: _____

Tool Manager: _____ City: _____

Phone #: _____ Email: _____



Rail Modules

Modules	Description	Cat ID	Qty
	1 Man Wall Assembly BC100WA		
	1.5 Man Wall Assembly BC150WA		
	2 Man Wall Assembly BC200WA		
	Integrated Corner Piece BC599		
	Hard Tool Storage BC501C		
	Tool Apron Storage BC502C		
	Magnetic Tool Storage BC504C		

Modules	Description	Cat ID	Qty
	Auger Bit Storage BC507C		
	Utility Bar Storage BC508C		
	Socket Storage BC509C		
	Work Tray BC503C		
	Hardware Pouch BC510C		
	Large Pouch BC511C		
	Multi-Tool Holder BC512C		

Modules	Description	Cat ID	Qty
	Oval Bucket BC513C		
	Cup Holder 54817MB		
	Open Hook BC505C		
	Closed Hook BC506C		

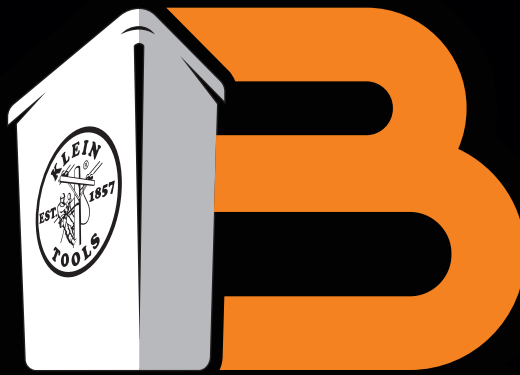
S-Hook Modules

Modules	Descr.	Cat ID	Qty
	Hard Tool Storage BC501S		
	Tool Apron Storage BC502S		

Modules	Descr.	Cat ID	Qty
	Magnetic Tool Storage BC504S		
	Auger Bit Storage BC507S		

Modules	Descr.	Cat ID	Qty
	Utility Bar Storage BC508S		
	Socket Storage BC509S		

Modules	Descr.	Cat ID	Qty
	S-Hook 2' BC311		
	S-Hook 3' BC312		



BUCKET WORK CENTER™



See our complete line of **Bucket Work Center** products
www.kleintools.com



© 2023 Klein Tools, Inc.
Lincolnshire, IL 60069
MKT032023