



SERVICE PARTS LIST

BULLETIN NO.
54-05-0085

SPECIFY CATALOG NO. AND SERIAL NO. WHEN ORDERING PARTS			REVISED BULLETIN	DATE
M18 FUEL™ HammerVAC™ 1-1/4" Dedicated Dust Extractors				Sept. 2022
CATALOG NO.	2916-DE	STARTING SERIAL NO.	WIRING INSTRUCTION	
		N06A	See Page 2	

EXAMPLE:
Component Parts (Small #)
Are Included When Ordering
The Assembly (Large #).

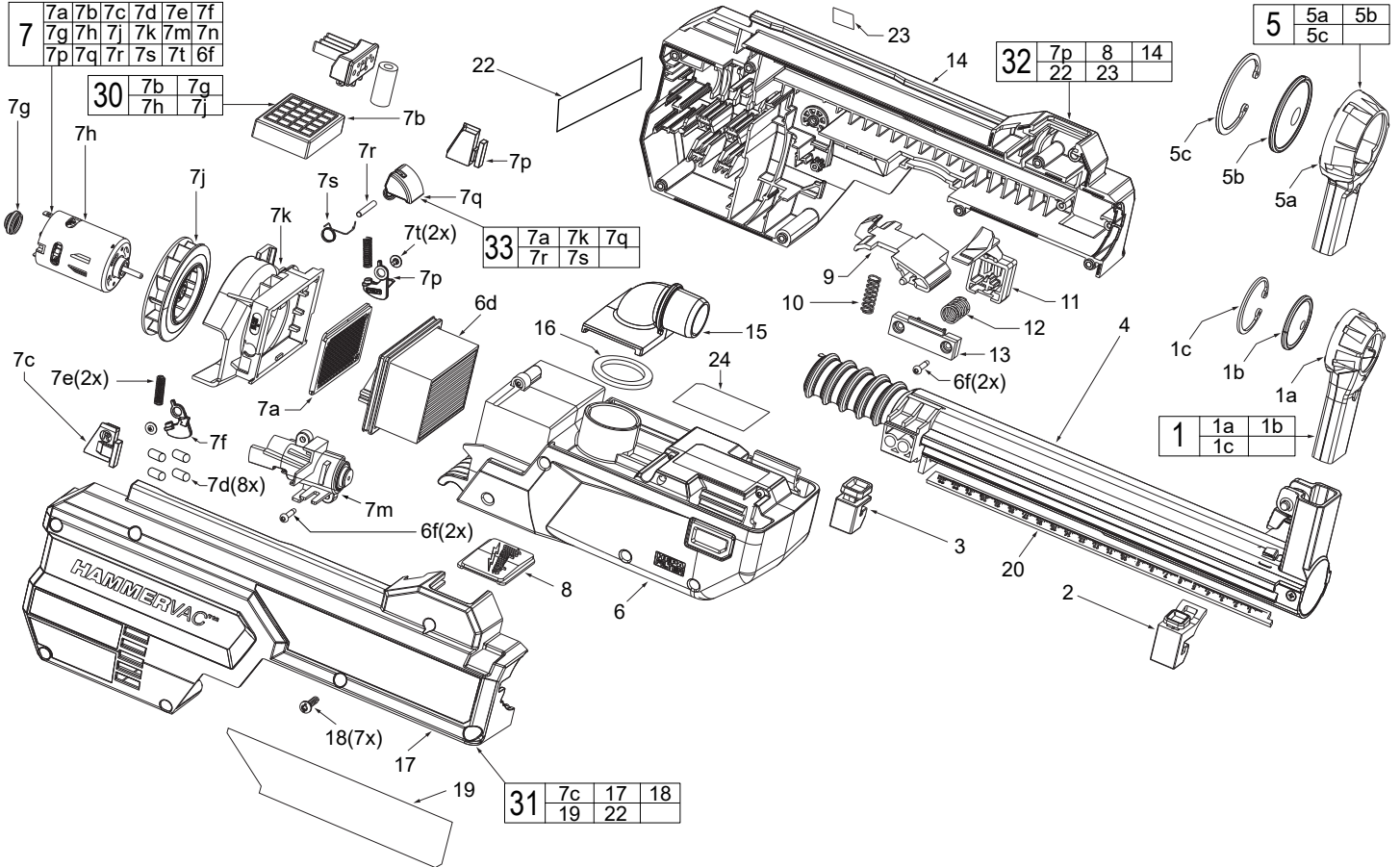


FIG.	PART NO.	DESCRIPTION OF PART	NO. REQ.	FIG.	PART NO.	DESCRIPTION OF PART	NO. REQ.
1	14-52-0105	Nozzle Top Service Assembly	(1)	7q	-----	Bell Crank	(1)
1a	31-01-0213	Nozzle	(1)	7r	-----	Pin	(1)
1b	43-31-0475	Hair Brush	(1)	7s	-----	Torsion Spring	(1)
1c	34-60-0995	Bev Retaining Ring	(1)	7t	-----	M2.3 Philips Screw	(2)
2	42-36-0086	Front Depth Stop Assembly	(1)	8	43-84-0026	Logo Panel	(1)
3	42-36-0087	Back Depth Stop Assembly	(1)	9	44-20-0074	Rotary Latch	(1)
4	31-12-0071	Nozzle Base Assembly	(1)	10	40-50-0507	Rotary Latch Spring	(1)
5	14-52-0110	Nozzle Top Assembly for Stop Bit	(1)	11	42-42-0156	Rotary Button	(1)
6	42-16-0015	Dust Box Assembly	(1)	12	40-50-0508	Latch Button Spring	(1)
6d	49-90-2306	Hammer Vac Filter	(1)	13	22-68-0226	Rotary Latch Cover	(1)
6f	-----	M3 Pan Hd. T-10 Screw	(4)	14	31-44-0442	Housing Support	(1)
7	14-20-0323	Motor & PCBA Service Kit	(1)	15	22-18-0033	Elbow Tube	(1)
7a	-----	Mesh Panel	(1)	16	43-44-0042	Fan Baffle Gasket	(1)
7b	-----	PCBA Assembly	(1)	17	22-68-0227	Housing Cover	(1)
7c	-----	Left Rubber Bumper	(1)	18	05-74-0247	M4 TH Screw	(1)
7d	-----	Isolator	(8)	19	10-20-9953	Warning Label	(1)
7e	-----	Spring	(2)	20	43-82-0015	Ruler	(1)
7f	-----	Filter Detector House Cover	(1)	22	12-20-0382	Service Nameplate	(1)
7g	-----	Silicone Cap	(1)	23	10-20-0209	Warning Label	(1)
7h	-----	Motor	(1)	24	10-20-9956	Dust Box Warning Label	(1)
7j	-----	Fan	(1)	30	14-20-0162	PCBA Motor and Fan Service Kit	(1)
7k	-----	Suction Elbow	(1)	31	31-44-0342	Housing Support Service Kit	(1)
7m	-----	Solenoid Cover	(1)	32	31-15-0162	Housing Cover Service Kit	(1)
7n	-----	Filter Detector Housing Support	(1)	33	14-09-0021	Suction Elbow/Bell Crank Service Kit	(1)
7p	-----	Right Rubber Bumper	(1)				

WIRING DIAGRAM

AS AN AID TO REASSEMBLY, TAKE NOTICE OF WIRE ROUTING AND POSITION IN WIRE GUIDES AND TRAPS WHILE DISMANTLING TOOL.

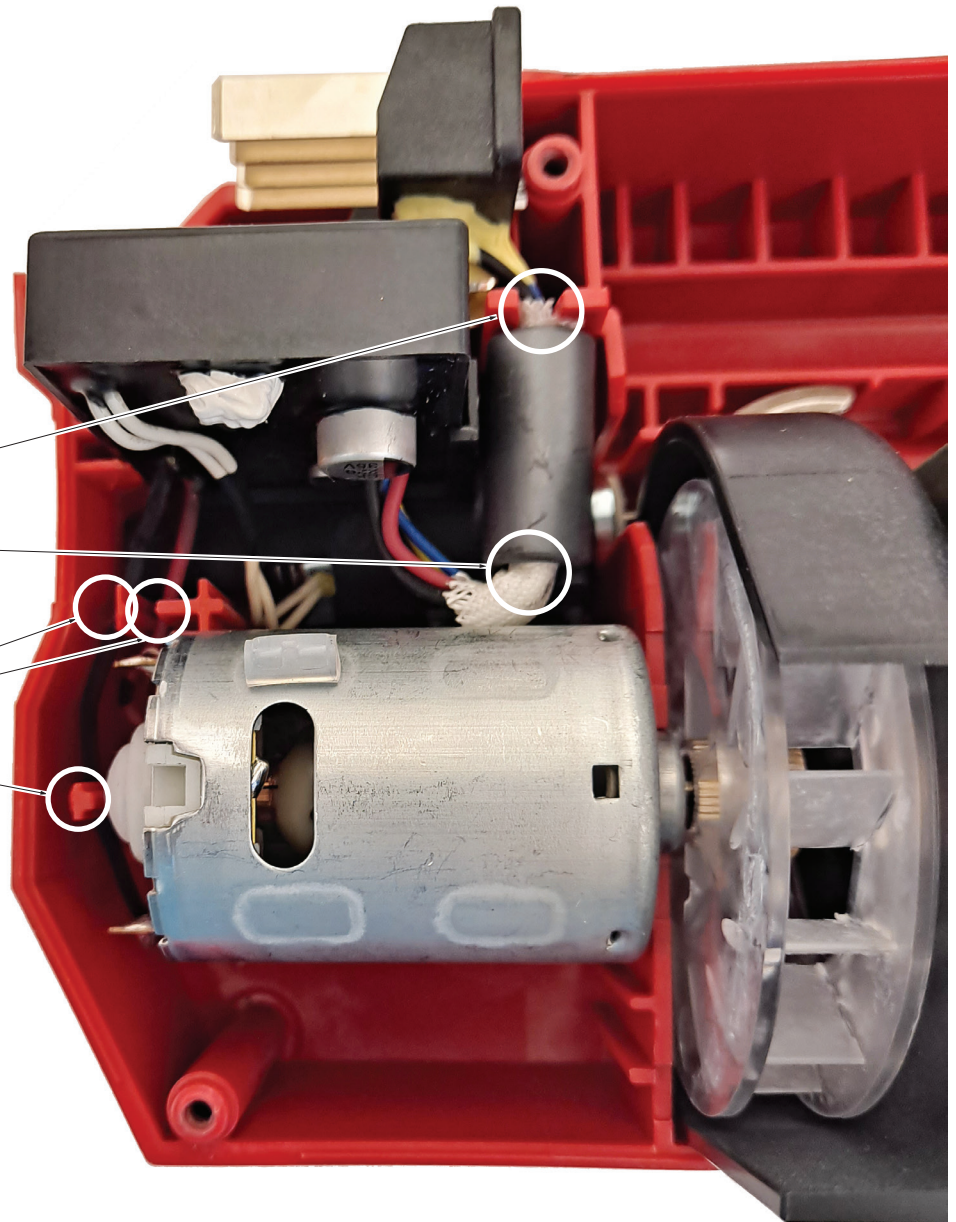
BE SURE THAT ALL COMPONENTS OF THE ELECTRONICS KIT ARE SEATED FIRMLY AND SQUARELY IN THE HOUSING RECESSES.

AVOID PINCHED WIRES, BE SURE THAT ALL WIRES AND SLEEVES ARE PRESSED COMPLETELY DOWN IN WIRE GUIDES AND TRAPS.

PRIOR TO INSTALLING THE HOUSING COVER ONTO THE HOUSING SUPPORT, BE SURE THAT THERE ARE NO INTERFERENCES.

Place Ferrite and Terminal Wire into Channels

Place Motor Wires into Wire Traps or Channels



SCREW TORQUE SPECIFICATIONS

FIG.	PART NO.	WHERE USED	SEAT TORQUE	
			(KG/CM)	(IN/LBS)
6f	-----	Rotary Latch/Solenoid Cvr	9.0±1	7.8±1
7t	-----	Filter Detector	2.5±1	2.2±1
18	05-74-0247	Housing Cover	9.0±1	7.8±1