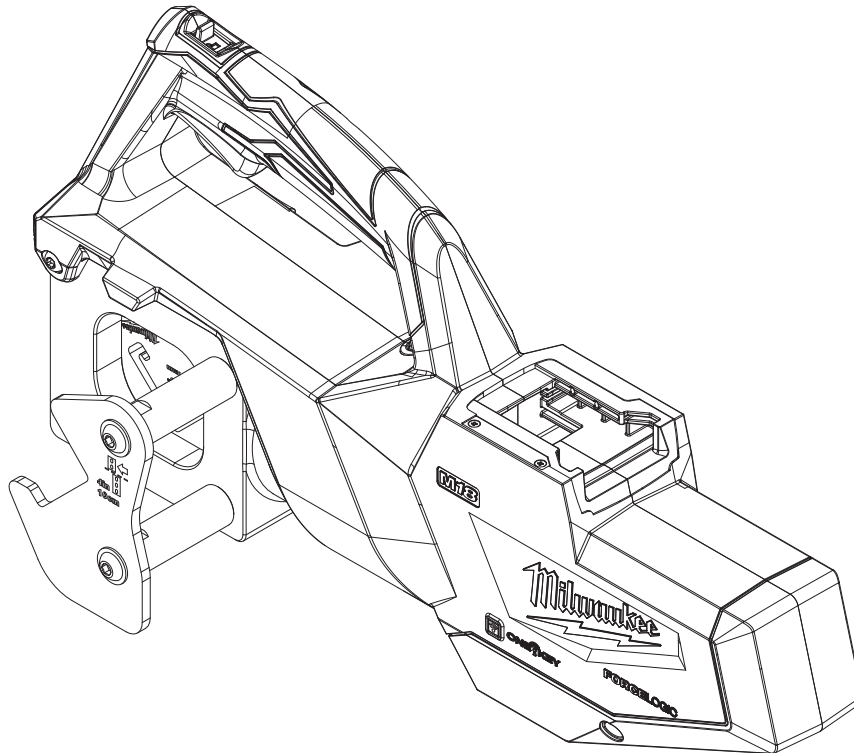




## SERVICE PARTS LIST

BULLETIN NO.  
54-00-2933

SPECIFY CATALOG NO. AND SERIAL NO. WHEN ORDERING PARTS				REVISED BULLETIN	DATE
M18™ FORCE LOGIC™ Single Channel Strut Shear					Aug. 2023
CATALOG NO.	2933-20	SERIAL NUMBER	N76A	WIRING INSTRUCTION	



Due to the combination of hydraulics and electronics in this tool,

**service can only be performed at these  
Milwaukee factory Central Repair Centers:**

**MILWAUKEE TOOL**  
**Central Repair**  
**1401 Sycamore Avenue**  
**Greenwood, MS 38930**

**MILWAUKEE TOOL**  
**Central Repair**  
**2198 Southtech Drive**  
**Greenwood, IN 46143**

Please send your tool directly to one of these locations for service.

Or

**Via e-Service at: [www.milwaukeetool.com/e-service](http://www.milwaukeetool.com/e-service)**  
questions, please call 1.800.SAWDUST (1.800.729.3878)

Or

Return it to a MILWAUKEE *factory* Service Center location, freight prepaid and insured.  
A copy of the proof of purchase should be included with the return product.

---

If you have questions please contact Milwaukee Product Service at:

**Product Technical Support via phone at: 262.783.8642**

Or

**Via email at: [METProductSupport@milwaukeetool.com](mailto:METProductSupport@milwaukeetool.com)**

**Disassembly of electronics package is not recommended and could void the warranty.**

## SERVICE PARTS EXPLODED VIEW

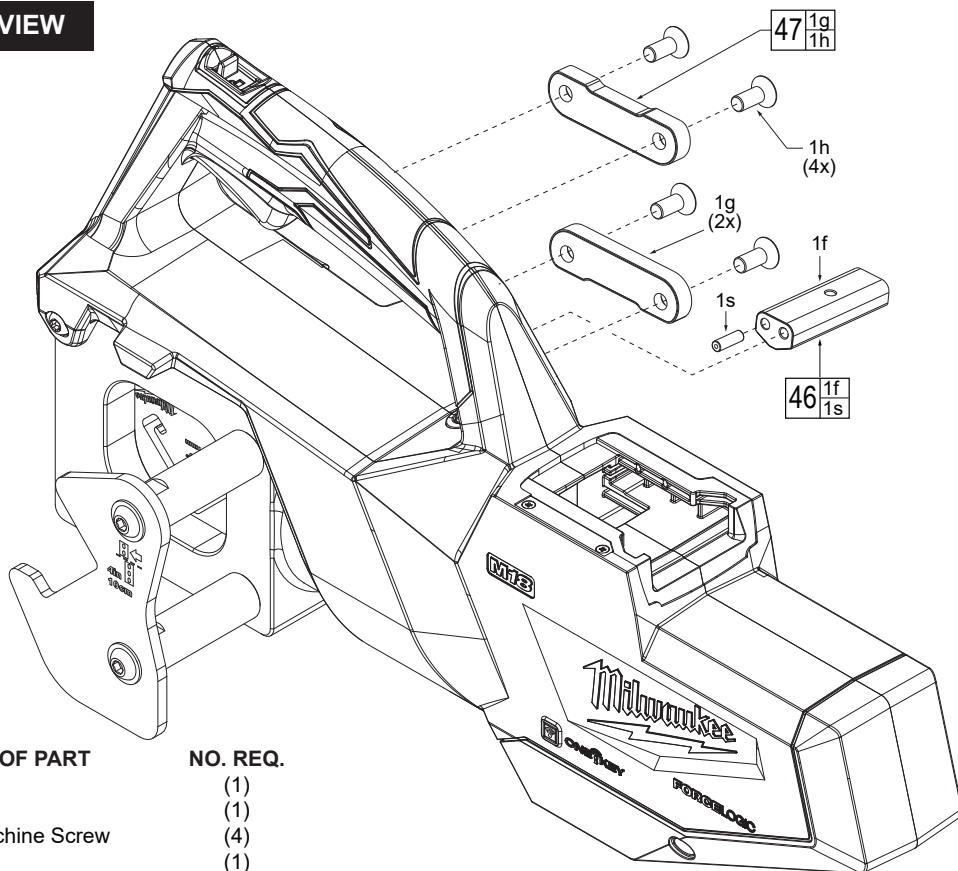


FIG.	PART NO.	DESCRIPTION OF PART	NO. REQ.
1f	-----	Clamp Arm	(1)
1g	-----	Side Plate	(1)
1h	-----	M8 x 20mm Machine Screw	(4)
1s	-----	Dowel Pin	(1)
46	22-38-0011	Clamp Arm Service Kit	(1)
47	28-28-0034	Side Plate Service Kit	(1)
51	12-20-0168	Service Nameplate (not shown)	(1)

## LUBRICATION INSTRUCTIONS

 = 243 Blue Loctite®, 44-22-0095

### NOTE

Regarding parts to receive thread locking sealant: Place one to two drops of the recommended Loctite® thread locking sealant (or the equivalent) to the threads of parts shown prior to installation.

